

CHAUDHARY | FOUNDATION

Since 1995







Message from CHAIRMAN

I sit down to write this message during a difficult time, and I am overcome with a myriad of emotions. This year marks the 25th year of service for Chaudhary Foundation, an achievement we should all be proud of. Despite being a time for celebration, the unprecedented global health crisis, COVID-19 pandemic, has left us with uncertainties. The repercussions will be felt for many years; life may not be the same. But, I am hopeful, we will overcome this and emerge stronger and better.

A social initiative of Chaudhary Group in Nepal, Chaudhary Foundation, established in 1995, has been continually working towards community development and as a first responder to natural disasters. Our team's prompt response during the 2015 earthquake and flash floods during monsoons were commended by all. Hence, our Foundation's active involvement in mitigating the impacts of the contagion was no surprise. The donation of medical equipment, PCR reagents and ventilators to the hospitals were lauded by all sections of the society.

Giving back reflects the inherent moral fabric of Chaudhary Group. Today, as CG Corp Global, our international arm, expands across the globe, Chaudhary Foundation follows closely behind, leaving footprints wherever it reaches. We have

strongly upheld our social commitments, and our conviction to help society drives our growth. The Foundation has today made its way into India as Chaudhary Foundation India and we hope to impact more lives and expand our aegis over the years.

In retrospect, while Chaudhary Group grew to be a multinational conglomerate of Nepal with a global presence, Chaudhary Foundation too was growing its reach. With our projects in line with the Sustainable Development Goals, it fills me with pride knowing that we are now making meaningful social impact.

Currently, as we languidly move towards a new normal, where face masks, sanitizers and disinfectants are an integral part of our lives, we seek shelter in the affirmation, This, Too, Shall Pass. We move forward with hopes of a better tomorrow.

And, with this report I hope you will get to learn more about our work and be encouraged to do your bit.

Binod K. Chaudhary
Chairman, Chaudhary Foundation



Message from VICE-CHAIR

As I compose this message, I fear the impending challenge that lies ahead of us in the wake of COVID-19 pandemic. This global pandemic is not just a health crisis but is fast becoming an economic crisis. As countries around the globe opted for the extreme step of lockdowns to contain the spread, businesses were shut down for months leading to economic losses and loss of livelihood for many. Hence, with determination to continue impacting countless lives, I reminisce about our achievements as we complete 25 years.

Chaudhary Foundation has evolved from a social initiative of Chaudhary Group to an institution working for the upliftment and development of the society. Today, we have systematically categorized our projects under six programs – Education, Enterprise Development, Health and Sanitation, Livelihood and Skill Development, Heritage and Spiritual Development and Post Disaster Response and Management.

Over the years, we have established ourselves as the number one “Corporate-Social” organization in Nepal. One of our notable achievements include post-disaster management during the 2015 Nepal earthquake when we built 2500 transitional shelters in earthquake affected communities.

Equally important and noteworthy are Chaudhary Foundation’s Unnati Cultural Village – a livelihood and skill development program that aims to promote traditional art and craft and Nepal Social Business – an impact investment program that has been encouraging innovative entrepreneurship among the youth. In addition, I believe our response to the global pandemic through COVID-19 Prevention and Protection Campaign was commendable.

And, amidst the celebratory occasion of the Silver Jubilee, I am proud to be associated with Chaudhary Foundation as Vice-Chairman. With our CSR initiatives expanding its reach following the establishment of Chaudhary Foundation in India, I hope we will continue to grow and elevate more societies across the globe. Lastly, I would like to thank the Foundation team, friends and partners, who have supported our endeavors and believed in us..

Nirvana Chaudhary

Vice-Chairman, Chaudhary Foundation

IMPACTS



SPOTLIGHTS 1994 - 2020

Towards Sustained Social Reform

Guided by a strong sense of responsibility towards building a better world, Chaudhry Foundation has been focused in activities aimed at improving lives, strengthening communities and promoting sustainable development.

Entrepreneur Development | Women Empowerment | Health & Education | Livelihood & Skill Development | Education | Post Disaster Response & Management | Heritage & Cultural Development



Shree Lunkan Das – Gangadri Chaudhary Charity Hospital established, 1994



Former Chief Minister, Uttar Pradesh Chaudhary Devi Lal Award for Best Social Work, 2011



and Late P. Kesri Singh, Former Chief Minister, Madhya Pradesh, 2010



CGA committed to supporting sports and has been sponsoring 4-14 national level and women's U16s teams and organizing sporting events since 2000



Free Dental Camp at Bhakra, Madhya Pradesh, 5th March 2010



KASAM Project Kalkat Sanitary Mission, 2010



Chaudhary Foundation has been supporting schools with science teachers and science labs in different schools since 2010



Gyan Maya Scholarship was established in 2010 to help underprivileged students



Foundation has installed 100 solar panels, 2013



Operation Deltic, November 2011-March 2012



Chaudhary Foundation awarded Nepal Social Business Program, 2014



SKIT Development Training, 2014



Chaudhary Foundation was involved in construction of small level toilets and schools post 2015 Nepal Earthquake



Shree Lal Das inaugurated by President of Nepal, Mr. Bishnu Dev Bhandari, March 7, 2016



Distribution of medical equipment as part of COVID-19 Prevention and Protection Campaign, 2020



Ex. Hon. President Bishnu Dev Bhandari inaugurating Balyo Nepal, an initiative to address manual job, launched in partnership with Gates Foundation, November 2019



Sanitization of 50000 ITI's water reservoir in Dhaulikhola



Artificial Limb Implant Camp, jointly organized by Chaudhary Foundation and Shree Lal Das, Mahaveer Vikram Salgotra Centre for Prosthetic Technology of India, January 2019

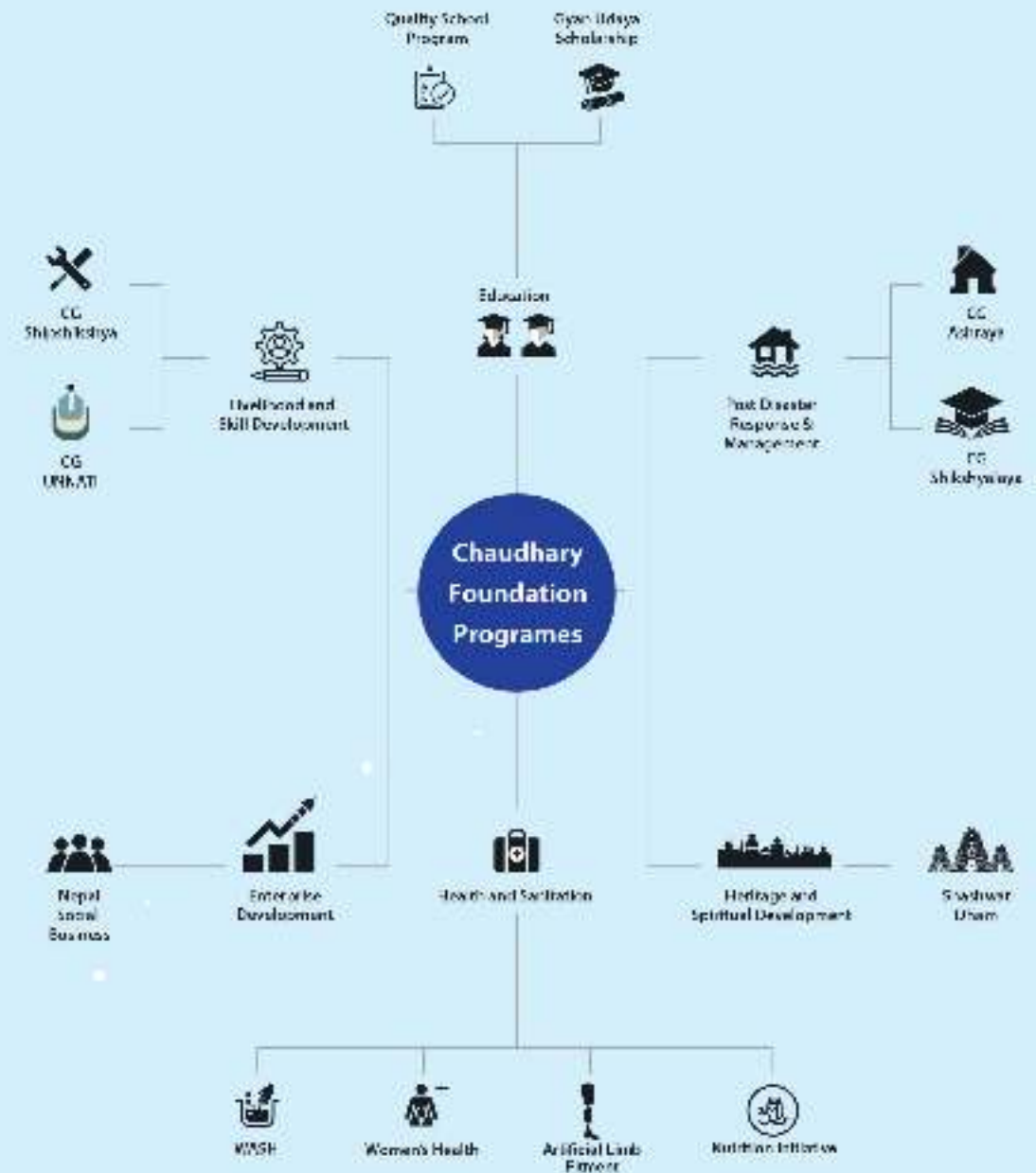


Pemuda Award for Best Social Project inaugurated by Ex. Ambassador of India to Nepal, July 2017

OUR PROGRAMME AREAS



Late Mr. Lunkaran Das Chaudhary, Founding Chairman of Chaudhary Foundation inaugurating CG Medicare at CGIP in 2003





ENTERPRISE DEVELOPMENT

Chaudhary Foundation believes addressing social issues through business and enterprise will help reduce Nepal's poverty level. CF's goal is to promote entrepreneurship among the youth. Our enterprise program, Nepal Social Business, focuses on bettering the economic status and reducing poverty in some of the poorest regions in the nation — including Dolpo, Jumla and Kailali — through social business innovation.



Rahul Chaudhary
Board of Director

“

When Chaudhary Foundation approached CG Hospitality for support, we jumped at the opportunity to lend our expertise to the project.

”

Putting Dolpo In The Global Trekking Map

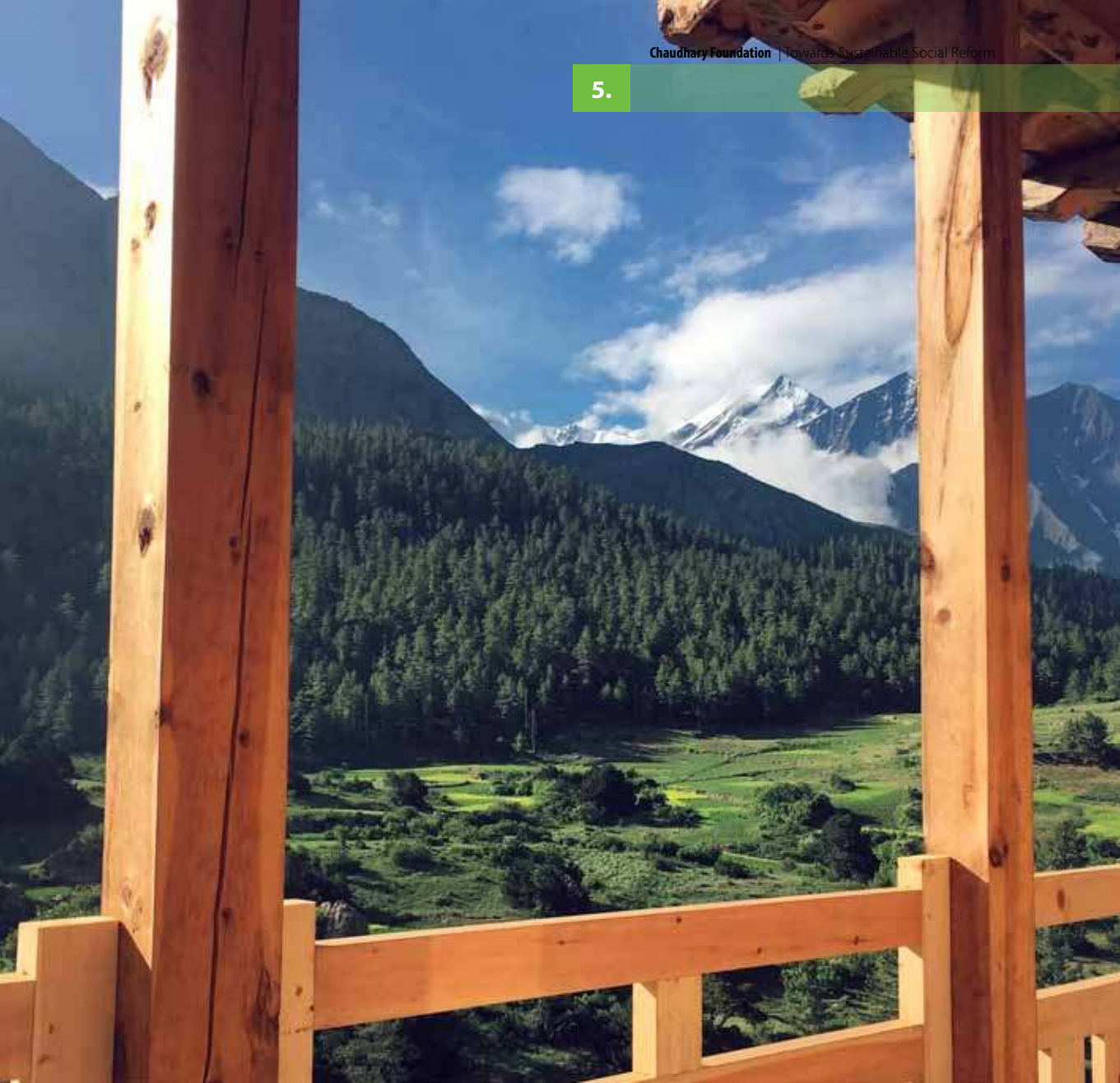
Mr. Binod Chaudhary accompanied by Mr. Mike Perlis, CEO of Forbes magazine, trekked to Shey Phoksundo Lake from Juphal Airport in Dolpo district in September 2016. Despite offering a priceless experience with beautiful sceneries straight out of a travel book, the region lacked proper accommodation facilities. The lack of basic infrastructure overshadowed the huge potential it offered as a trekking destination. Hence, to promote

“

Putting Juphal - Shey Phoksundo trekking route into the global trekking map”

”





tourism and improve livelihood in the region, Chaudhary Foundation decided to launch Dolpo Eco-Lodge Project under Nepal Social Business (NSB) Program in 2016 to upgrade the available hotels at every junction along the Juphal - Shey-Phoksundo Lake trail, namely Dunai, Juphal, Kagani, Ryachi, Saijol (Bagral) and Rigmo.

When Chaudhary Foundation approached CG Hospitality for support, we jumped at the opportunity to lend our expertise to the project. This initiative would not only help promote tourism in

Dolpo, but also enhance skills of local hoteliers to run their hotels professionally.

The first thing we did for the project was to bring one young boy, Rigzin Budda from Rigmo Village, Dolpo to Kathmandu. We provided him with on-the-job training at Hotel Summit in Lalitpur. He not only learned hospitality skills at the hotel but also learned project management skills at Chaudhary Foundation for few months. After receiving a total of 18 months training he was sent back to Dolpo as a local coordinator for the project.



At the beginning, a team comprising of members from Chaudhary Foundation and CG Hospitality visited Dolpo for initial assessment of hotels and lodges in the lower Dolpo region. The team later held a training cum selection session at Dolpo itself in the presence of local authorities and other stakeholders. Finally, six hotels were selected for investment based on various criteria set by the selection committee. Although only six hotels were chosen, the remaining hotels in the region will still receive technical support from CF/NSB as the goal is to promote tourism in Dolpo region.

The team from both CF and CG Hospitality supported in the preparation of a mock room with basic amenities. Further support was provided for renovating/preparing kitchen, dining, bathroom and other areas of the hotels. The trekking route is yet to realize its true potential as the region is underdeveloped compared to other trekking trails in Nepal. With this project, CF hopes to impact tourism in the area as these lodges now offer cozy bed and breakfast, organic food, showers and clean bathroom facilities.

Following the upgradation and enhancement of the lodges, the region has seen an increased flow in domestic and international tourists. The year 2019 saw a 75 per cent growth in tourist arrivals. CF is currently working on promoting Dolpo through various arena and help put Dolpo at the world trekking map.





Prasanna Ratna Bajracharya
Deputy Manager

“

Six years have passed since the launch of this initiative, and it has been an enriching experience for Chaudhary Foundation.

”

Trained more than
100
entrepreneurs

52 social
enterprises have
been **incubated**

15 enterprises
have received
investment

Making an Impact Through Social Business

Chaudhary Foundation and Lions Club International Foundation (LCIF) entered into a partnership in 2014 to establish Nepal Social Business (NSB), a platform aimed at reducing poverty through investment in sustainable and ethical businesses in Nepal. During then launch event, Mr. Binod Chaudhary, Chairman at Chaudhary Foundation spoke at length about Microfinance and Social Business concepts, and also shared his dream – a dream to transform the world through positive change and thinking.

Inspired by Nobel Peace Prize winner Prof. Muhammad Yunus' social business principle and modality, Mr. Chaudhary presented the Social Business Programme in Nepal. This initiative hopes to encourage innovative entrepreneurship especially youth-led that will generate employment opportunities and is financially sustainable.

During its official launch in Nepal, Mr. Chaudhary reiterated the need for doing business socially. He pointed that charity is being done everywhere, but it is mostly (mis)used to shrug off responsibilities. "Charity is no solution; it only perpetuates poverty," he stated.

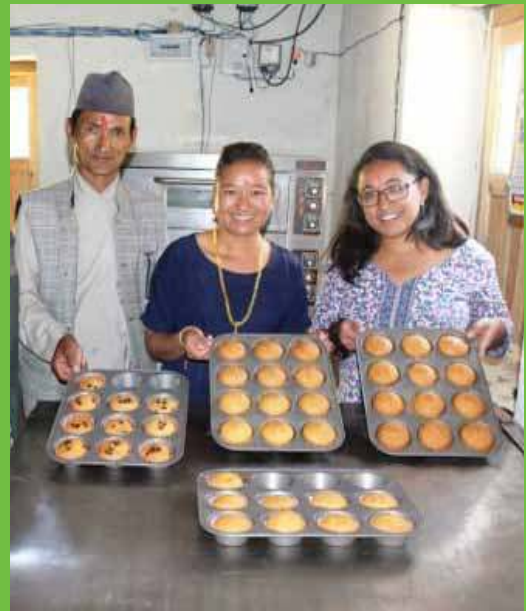
At the event, Mr. Nirvana Chaudhary, Vice Chairman of Chaudhary Foundation added that such programs will help push economic activities in Nepal, especially



in the rural areas of the country. “Our aim is not just to teach people how to fish, but to revolutionize the whole production business in Nepal.”

Cut to the present, NSB has trained more than 100 entrepreneurs and over 52 social enterprises have been incubated. 15 enterprises have received investment through this program. From its pilot project in Jumla, focused on reducing malnutrition in the region, to Dolpo – a trekker’s paradise, where NSB is promoting tourism, NSB has supported projects in various sectors across the mid-west and far-west region of Nepal.

Six years have passed since the launch of this initiative, and it has been an enriching experience for Chaudhary Foundation. Mr. Binod Chaudhary’s dream of a “better world” back in 2014 is slowly being realized through Nepal Social Business.





Programmes under Nepal Social Business are:

1. Karnali Miteri Udhog, Jumla

Based in Jumla, Karnali Miteri Udhog is the first project of Nepal Social Business and is a community-owned factory that produces various food products to contain necessary nutrients and reach vulnerable families. Various research shows that nutritional status of children in Jumla is below the national standard, which is why the project has been focusing on reducing malnutrition in children ages 0 to 59 months — aligning with Nepal's goal to reduce malnutrition to one percent by 2030 — and promoting sustainable produce.

2. Organic Phalphul Tatha Khadya Udhog, Jumla

Another project in Jumla, this enterprise produces organic dried apple slices, black beans, and lentils. Jumla is also famous for its apples, black lentil (simi daal) and other products all grown organically. The project has been promoting local products of Jumla to other districts of Nepal as well as creating awareness on organic farming

3. Dang Hosiery Tatha Garment, Dang

This enterprise in Tulsipur Municipality, was established to meet the need of school uniforms at affordable costs for both government and private schools. It has been providing employment to women with poor economic background, and also

providing school uniforms at an affordable cost to families with low income.

4. Bageshwori Bahudeshiya Krishi Farm, Salyan

Based in Kotmaula VDC, this multipurpose farm produces saplings of oranges, lemon, pomegranate and lime. The entrepreneur aims to improve the socio economic standards of farmers, developing and extending market networks of citrus fruits products and sharing technical and administrative knowledge and expertise.

5. Mahalaxmi Jhola Udhog, Kailali

Mahalaxmi Jhola from Tikapur municipality, has been producing eco-friendly bags as well as backpacks for the last 4 years. This project aims to replace plastic bags with eco-friendly bags in Tikapur Municipality. With this newly formed city hustling with new businesses more and more waste is being generated especially plastic waste. In order to tackle such pollution especially of plastic bags, NSB invested in Mahalaxmi Jhola Udhog and supported the company in producing environment friendly bags and replacing plastic bags.

6. Dolpo Eco Lodge Project

The Dolpo Eco Lodge Project was initiated to upgrade the socioeconomic status of lower Dolpo through the promotion of tourism in the region. The project aims to promote Dolpa and its trekking route to Lake Phoksundo and upgrade existing lodges and provide comfortable and professional service to the trekkers and travelers in the region. This project has been highlighting the amazing landscape of Dolpo as well as promotion of local art and culture as well.

7. Anthropose

A for-profit social-good company that aspires to recognize and identify social problems and create viable, sustainable and scalable entrepreneurial solutions through eyewear. For every 20 pairs of glasses sold, Anthropose performs a cataract surgery free of cost for 1 individual. It believes that through restored eyesight an individual can restore independence, economic potential and unlimited opportunities NSB has recently partnered with this company to scale up their eyewear production and to create a greater social impact.

Road to Entrepreneurship – Bags for Impact

Matrika Timilsena

I have always believed that entrepreneurs will contribute to Nepal's economic growth. Hence, driven by a strong desire for entrepreneurship, I started Mahalaxmi Food Product, a noodle production factory in Tikapur, Kailali District of Sudurpaschim Province. However, the competition was fierce and it became difficult to sustain the business; I started seeking other options.

One day, my friend Tek Narayan Poudel, associated with Lions Club, informed me that Lions Club in partnership with Chaudhary Foundation had launched Nepal Social Business (NSB), a social business program to promote entrepreneurship at grassroots level in rural Nepal. "You should apply for this," he insisted.

Hence, I submitted a proposal and concept paper for producing environment friendly bags. I did not expect to be selected and having no connection with either Lions Club or Chaudhary Foundation, I did not bother following up after submission.

To my surprise a few months later, I was informed about my selection. I was asked to attend a skype interview and sign the Memorandum of Understanding (MoU). Following this, I attended training, the first in Dadelhura, second in Kathmandu and third one in Nepalgunj. NSB



equipped me with the skill needed for the new business. In partnership with my neighbor, Dharendra Sodari, we registered the firm, Mahalaxmi Garment Industry. We bought 20 machines and hired 15 individuals. NSB provided us Rs 500,00 as grant and additional Rs one million loan.

Today our business has expanded under Mahalaxmi Group, with Mahalaxmi Food Product, Mahalaxmi Agro Centre, Mahalaxmi Garment, and Mahalaxmi Bag. Altogether, 50 individuals are employed by our company. Mahalaxmi Bag Industry produces various types of bags while Mahalaxmi Garment manufactures school uniforms. Mahalaxmi Food Product produces noodles and we sell daily essentials except alcohol, tobacco and meat products through Mahalaxmi Agro Centre.

We are extremely grateful to Chaudhary Foundation and their NSB program. Had it not been for their support, the Mahalaxmi Group would not have been established. Learning is a lifelong process and I hope to keep learning through platforms like Nepal Social Business.



Basant Pal
Senior Manager

E-waste Management— Our effort in Environment Protection

The food we eat, the air we breathe, the habitat we live in; everything comes from nature and belongs to nature. Simply put, environment is nature; the natural landscape encompassing all living and nonliving things. However, urbanization, population



Impact of e-waste take back and door to door collection program since June 2019



Recycled and Reused more than six tonnes of e-waste.



Disseminating knowledge on e-waste management to more than 1500 individuals.



and economic growth, and increase in energy consumption has led to deterioration of the environment. Environmental pollution is one of the serious global challenges the world is facing in present times. And, a UN report has already called for “urgent action at an unprecedented scale to arrest and reverse this situation.”

Likewise, the case of Kathmandu, capital city of Nepal is no different. The rapid urbanization in the valley has led to an increase in waste and lack of a proper system for waste disposal is posing a challenge. The air quality is declining rapidly and Kathmandu is blanketed by thick, suffocating dust and pungent smell. People are forced to live in this deteriorating situation. As a result, Kathmandu has been ironically labeled dhulomandu (dustmandu), maskmandu, etc. It is a grave loss that our city of temples “Kathmandu” is rapidly turning into the most polluted city in the world.

Therefore, we at Chaudhary Foundation felt compelled to make an effort towards

environment protection. On World Environment Day in 2019, we launched the E-waste Management Project in collaboration with CG Electronics and Blue Waste to Value organization. This project aims to take back electronic waste at various CG and LG Shoppe and locations around Kathmandu. In the span of one year, we were successful in preventing more than six tonnes of electronic waste from reaching landfill sites. In addition, our recycling partner, Blue Waste to Value (BW2V) has collected more than 6150kg of waste from Chaudhary Group Head Office, Sanepa since September 2019, which would otherwise have made its way to the local landfill site.

We are hopeful our action has protected our environment by preventing toxic elements from reaching landfill sites and would like to notify all that the electronic waste drop off system and door to door drop off system is our continuous process. Hence, we welcome you to follow this e-waste management system and spread the word.



EDUCATION

Chaudhary Foundation believes equitable and quality education leads to lifelong learning opportunities and empowers marginalised and vulnerable students. Since its inception, CF has concentrated on creating equality within the education system. Our programs focus on providing scholarships to students, supplying classrooms with digital equipment and providing skill enhancement training to teachers in rural areas.



Ashesh BARAL
Assistant Manager

Resources



21
laptops



185
computers



22
televisions



21
projectors

Trend of Digital Learning in Nepal

Poor access to ICT facilities have impeded the development of community/public schools in Nepal. The increasing disparity between private and community schools is a concern. Due to lack of infrastructure and resources, students from community schools are at a disadvantage. Hence, Chaudhary Foundation has introduced the Digital Classroom Program to address this disparity. Initiated with the motive to bridge the gap between the existing education system in rural communities and global digital transformation, Chaudhary Foundation aims to empower the youth of rural Nepal by equipping public schools with required resources.

Chaudhary Foundation is certainly not the first organization to introduce this initiative but aims to be the foremost to commence this across the country. Over the last couple of years, the Foundation has equipped 24 community schools in 7 districts and we hope to expand our reach in the coming years..





Gyan Udaya Scholarship

GyanUdaya Scholarship is a financial assistance program established in 2010. The scholarship helps deserving but underprivileged students to pursue higher education after Secondary Education Examination (SEE). It is provided on annual basis through Chaudhary Group's "Educated Nepalis: Prosperous Nepal" Initiative and till date more than 1000 students have benefited.

The students are selected on merit and exam scores but are required to have a parent who works for one of the CG's factories in Kathmandu, Lalitpur and Nawalparasi or are permanent residents in

those areas. In addition, community school teachers who help students from rural and underprivileged communities are also honored as part of the scholarship.

8000+
Students benefitted





Kalika Basic Level School – A Success Story

Kalika Basic Level School is a community school located at Budhaukuna, a small village at the edge of a community forest in ward 13 of Kawaswoti Municipality in the country's youngest district, Nawalpur. The locality is home to marginalized and minority communities and is situated in the outskirts of the city.

Ms. Radha Bastakoti, Principal was determined to enhance the education system by introducing digital learning at the school and received the support of the school management committee and community leaders. However, despite the effort and local support, the school struggled to secure necessary equipment. Chaudhary Foundation, upon knowledge of the predicament, provided the school with ICT



equipment like laptops, computers, TV, projector etc. through its Digital Classroom Program.

The Foundation also introduced the WASH Program at the school and set up a water filtration plant with the capacity to process 1,000 liters of drinking water per hour – enough to meet the daily drinking water requirement of 1,000 people. Thus, it is not just the school but the local community too has benefited from this.

Ms. Bastakoti is delighted to witness her dream materialize and she proudly shares that new admissions have notably increased and unlike earlier the students are willing to spend more time at the school.





POST DISASTER RESPONSE AND MANAGEMENT

Chaudhary Foundation believes everyone deserves dignity and aid in times of natural disaster. CF has a dedicated disaster response team (DRT) to provide immediate relief following natural disasters. This team was formed after the 2015 earthquake, when the foundation provided long-term humanitarian response to the communities most affected.



Merina Ranjit
Deputy General Manager

“

The Foundation's leaders realized that it was imperative for the Foundation to adopt an approach that would help rebuild the nation instead of just donating money to the Prime Minister's Relief Fund.

”

3000 transitional shelters
for around **15,000** people

40 semi-permanent schools
aided 20000+ students' education

Rebuilding Nepal Post April 2015 Earthquake

It was a spring morning, April 25, 2015, 11.56 local time, when a magnitude 7.9 earthquake struck Nepal, toppling multi-storeyed buildings and world heritage sites in Kathmandu, flattening entire villages at the epicenter and its vicinity, and causing landslides and avalanches in the mountainous regions including Mount Everest.

It was the deadliest earthquake in 81 years in Nepal and the most powerful earthquake I felt in my lifetime. It killed nearly 9000 people and injured more than 22,000 people.

It was a Saturday- weekly day off, when disaster struck, so most of us were home engaged in personal work. As a human instinct, the first thing on your mind is your children and family's safety. It was no different for me; I had left my 2.5-year-old home, while I was at the hospital with my husband. Until I reached home and saw my house standing as it is, I could not breathe. Later in the day, we started taking stock of our colleagues and office situation. Luckily, our CG Family was safe. However, the Head Office had been severely damaged. The continued aftershocks over the next several days disrupted normal life in Kathmandu.

On Tuesday, 28th April 2020, we organized a meeting with Chaudhary Group's Chairman Mr. Binod Chaudhary, Managing Director Mr. Nirvana Chaudhary, and then HR Head Mr. Moon Lee at the



canteen area, the annex block outside our damaged Head Office. CG Foods team and CG Education team had already started distributing relief food and shelter at that time. Our Chairman was gravely concerned but we did not know what could be done apart from distributing relief material. He was very clear that we needed to do something to help normalize the situation. After that meeting we had several meetings sometimes in parking lot, sometimes at Chairman's house. The entire CG team got involved and took up various roles for this Relief Committee with CG Foods team helping with logistics and village identification, CG Real Estate helped with procurements, CG Telcom team were the key implementation team for each village. We had 36 CG Telcom staff mobilized for almost 2 years' post-earthquake. We had regular review meetings every evening; and it happened for almost 1.5 year.

We also started an internal relief fund and provided funds to CG employees, whose houses had damaged by the earthquake to rebuild and repair their homes.

Chaudhary Foundation's Chairman, Binod Chaudhary and Vice-Chairman, Nirvana Chaudhary spearheaded the Foundation's relief efforts. Within hours of the earthquake, the Foundation had converted CG-owned schools in Kathmandu Valley to humanitarian relief camps. Hundreds of CG staff and distributors were mobilized to distribute food packets in the affected areas.

Over the next few months, as the government started taking stock of the situation, data was made available. Over 700,000 homes had been destroyed and with school buildings too destroyed over a million students were left with no school. The Foundation's leaders realized that it was imperative for the Foundation to adopt an approach that would help rebuild the nation instead of just donating money to the Prime Minister's Relief Fund. Given the group's expertise in sourcing raw materials and transportation with the involvement in real estate and cement industries, it was decided that the Foundation would help rebuild homes and schools.

The Foundation partnered with India-based organization, Sustainable Environment and Ecological Development Society (SEEDS) for the purpose, and CG Ashraya was born. Ten out of the 14 most affected districts were chosen as sites for the project. Between June 2015 to July 2016, CG Ashraya constructed over 3,000 transitional homes that house over 10,000 residents across 10 districts. The Foundation's earthquake rehabilitation efforts were acknowledged and appreciated far and wide. It breathed new life into the Foundation and gave visibility in the development community. The Foundation realized the difference it could make in the community.



Chandrasekaran Subramanian
Vice President

I have been involved in Chaudhary Foundation's activities since the earthquake in 2015. The instant gratification I felt during the post-earthquake rebuilding activities motivated me to continue my association with Chaudhary Foundation. I got the chance to learn the way to synergize in corporate world using its negotiating strength to implement rehabilitation projects in efficient way at economical cost as well as to ensure donors funds achieve the purpose.

I feel lucky to have got the opportunity to give back to the society and hope to continue my involvement with Chaudhary Foundation.





Girley Agarwal
Senior General Manager

The devastating earthquake in 2015 was a turning point for CG. It was perhaps the first time the corporate staff got involved in social work. Every one of us contributed to the relief efforts of Chaudhary Foundation.

The entire CG Education Team was mobilized for Chaudhary Foundation's School Rebuilding Project post-earthquake.

The rare chance we got, to make a difference in the lives of hundreds of students, is a source of pride and joy for us. It taught us to handle difficult situations and move forward with determination.

It was so satisfying and rewarding to see the smiling faces of the children and communities that we worked for. I am immensely grateful to have got the chance to work on such an impactful project.







Ram Kaji Sitaula
General Manager

“

Having gained experience from the earthquake, Chaudhary Foundation formed a designated Disaster Response Team (DRT) to act as an intermediary in matching resources with people's needs in times of crisis.

”

Chaudhary Foundation for Immediate Relief and Recovery

The Post Disaster Response Management Program was launched in the aftermath of the 2015 Nepal Earthquake to provide immediate relief following natural disasters. Having gained experience from the earthquake, Chaudhary Foundation formed a designated Disaster Response Team (DRT) to act as an intermediary in matching resources with people's needs in times of crisis. The team has been mobilized for various natural disasters like flood and windstorm relief till date.





During 2017 monsoons, heavy rainfall across several districts in Nepal, triggered landslides and floods and scores of people were killed and displaced without food and supplies. The committed DRT of Chaudhary Foundation reached the affected areas like Kailali, Parsa, Bara, Nawalpur, Chitwan and Rautahat and provided food packets, water, medical supplies and other essentials.

On March 31, 2019, a powerful windstorm hit Bara and Parsa districts in Province 2 that killed at least 28 people and left more than 1100 people injured

and many without food, water, and shelter. As an immediate response, Chaudhary Foundation sent its DRT to the affected districts and distributed dry noodles, water, medical supplies, blankets, mattresses and CGI sheets.

With a strong commitment to address humanitarian needs in times of disaster, Chaudhary Foundation strives to be a forerunner in providing immediate relief.



Pratirodh Shrestha
Senior Manager

“

The technology transfer thus enabled the locals to produce around 200,000 such eco-friendly bricks by using the locally available resources.

”

An Invisible Factor – Building an Integrated Model Village

Nepal Earthquake 2015, the worst natural disaster to hit Nepal since 1934 Nepal-India earthquake, resulted in innumerable casualties and injured a lot more. Centuries-old buildings including World Heritage sites were destroyed; people were rendered homeless as entire villages flattened across the affected districts.

In the aftermath of the disaster, Chaudhary Foundation provided immediate support through relief distribution and building transitional shelter and schools in worst hit districts. Chaudhary Foundation then realized the need for a model village in Giranchaur, Sindhupalchowk, one of the worst hit districts. Chaudhary Foundation had always desired to work with local communities to bring about economic and social transformation and could not let go of this opportunity. Hence, the concept for Integrated Model Village Project took shape.



Integrated Model Village Project officially commenced in April 2019 with the aim to build 62 permanent houses for more than 350 residents in the community. The Foundation has envisioned a model village that enhances sustainable development and builds resilience among marginalized communities by focusing on four major components: Healthy Lifestyle, Economic Prosperity, Social Harmony and Inclusion and Environmental sustainability.

The Integrated Model Village will be equipped with a health care system, clean drinking water facilities, quality education, community park, skill livelihood development activities, and road facilities connected

to the highway. As this project has adopted a participatory approach, Chaudhary Foundation imparted skills and livelihood training to the residents and they are now involved in producing sustainable earthquake resilient bricks which was then used in building their own houses. The technology transfer thus enabled the locals to produce around 200,000 such eco-friendly bricks by using the locally available resources. Furthermore, the same people were trained in building the house using the same CSEB bricks. The whole process was intended to make the people skillful allowing them to engage in income generating activities.



Working together with Chaudhary Foundation on the Integrated Model Village Project was a great experience for me. The fact that my contribution will help resettle an entire community gives me immense pride and satisfaction. I am thankful to the Foundation for giving me the opportunity to lend my expertise to such a fulfilling project."

Rannu Sharma

Assistant General Manager

When I was assigned to work for Integrated Model Village project, I was grateful for the opportunity. I felt lucky to be part of such a great project – a project that aims to create a sustainable and healthy community by offering livelihood training, education, health, water and sanitation eventually, enabling people to become self-sustained.

I got to witness the production of sustainable, earthquake-resilient bricks by the local community at Giranchaur – our project site and the trainings and motivation provided to them by the Foundation team.

The passion and drive of Chaudhary Foundation's team is remarkable and I am glad to have got a chance to work with them."

Pratap Kharel

Senior Manager



I have been working as the site engineer for Integrated Model Village at Giranchour, Sindhupalchok for the past two years. My previous experience in a similar project has helped a lot with this project.

It is always a challenge to work with people from different cultural groups and establish relations and coordinate with local bodies and stakeholders. However, the fact that we are contributing towards uplifting a community motivates me to give my all."

Sarad Dulal

Senior Executive



In addition, Chaudhary Foundation has established a fully equipped digital classroom with equipment such as Laptops, Computer, Projector and LED TV in the community schools which has helped children to get quality education. Likewise, under the Health and Sanitation component water reservoir tank has been

built for the community lifting the water from the source some 500 meters below from the settlement. This model village project is bound to bring positive, social and economic transformation in the village. People have already become capable and skillful and can work effectively.





Amir Raj Thapa
Senior Manager

“

Keeping in mind the safety of health care workers at the forefront, Chaudhary Foundation hopes the donation has helped keep them safe.

”

Resilience Strategy During Pandemic Outbreak

The battle against Novel Coronavirus (COVID-19) Pandemic, which was first identified in December 2019 in Wuhan, China is far from over. It is still raging at an unprecedented rate across the globe. Millions have been infected and many have died due to this highly contagious disease. Most countries opted for lockdowns to contain the spread. Nepal too implemented a nation-wide lockdown from 24th March to 21st July 2020. But, the situation is far from normal and people are now adapting to the new normal with masks and sanitizers as an integral part of our lives.





During this crisis, Chaudhary Foundation played an intermediary role matching resources with people's needs. Chaudhary Foundation has a designated Crisis Management Team led by senior members of the organization that is mobilized in times of crisis. Hence, prompt action during the pandemic was a natural step for Chaudhary Foundation. Chaudhary Foundation launched a four phased COVID-19 Prevention and Protection Campaign to help the government prepare for the onslaught of the public health crisis.

Chaudhary Foundation, along with CG Corporate team were involved in providing essential medical equipment across the seven provinces. Chaudhary Foundation donated medical equipment to more than 119 hospitals, district administration offices and health posts. Furthermore, the Foundation handed over 1000 RT PCR Reagents (COVID-19 testing) and eight ventilators to the Ministry of Health and Population.

After the lockdown was eased by the government, CG adopted safety and preventive measures ranging from measuring temperature with thermal guns to assigning employees on rotation basis and preparing prevention guidelines. CG has purchased an Insurance Policy to indemnify the risk of COVID-19 for all employees.

In continuation of COVID-19 Prevention and Protection Campaign, Chaudhary Foundation provided medical equipment to 30 birthing centers in Province 2. Nepal has one of the highest maternal and infant mortality rates in South Asia with 239 maternal deaths per 100,000 live births according to the 2016 Demographic and Health Survey. During the lockdown, 31 pregnant and lactating women lost their lives.

Keeping in mind the safety of health care workers at the forefront, Chaudhary Foundation hopes the donation has helped keep them safe.

200

RDT testing kits

200

PPE Kits

50

Oxygen Concentrators

500

liters Sanitizer

10

Ventilators



HEALTH & SANITATION

Chaudhary Foundation believes everyone has the right to good health, regardless of race, religion, gender, ability or income level. CF knows that reducing health disparities means tackling complex issues, which is why our programs focus on a variety of problems that affect people across Nepal — including women, children, minorities and people living with disabilities.



Ram Chandra Dhital
Deputy Manager

“

The Foundation believes that investing in health care system is the key to improving the quality of life.

”

Our Step for Drishti – From Darkness and Isolation to Light and Action

Chaudhary Foundation in partnership with HelpAge International launched “CG Operation Drishti” in 2011 to deliver quality ophthalmic services to underprivileged families and groups. Under Chaudhary Foundation’s direction, 11 health camps were organized in Baglung, Gulmi, Morang,





Kapilvastu, Nawalparasi, and Kathmandu. 7,451 eye patients were treated while another 5,390 received basic eye treatment during the camp. The Operation Drishti Camp performed a total of 1153 cataract surgeries between November 2011 to March 2012.

Chaudhary Foundation offers health care services to low-income senior citizens and marginalized groups with low or zero access to medical facilities. The Foundation believes that investing in a health care system is the key to improving the quality of life. The Foundation has been working towards enhancing the quality of life of people living in rural areas of Nepal, and Operation Drishti was a stepping stone towards this goal.

11

health camps

7,451

eye patients were treated

5,390

received basic eye treatment

1153

cataract surgeries

Vision after 22 Long Years:

Man Bahadur Thapa, 62 years old, from Dhullubaskot VDC-6 in Baglung District, had been suffering from partial blindness (blurred vision) bilateral due to cataract. The youngest of the 3 surviving brothers and 1 sister out of 9 siblings, he had been blind since the last 22 years and thus unmarried.

He managed to work partly with the help of his blurred vision and partly by experience, touch and guess work. On 14 December 2011, 3rd day of the camp Man Bahadur Thapa underwent a cataract surgery. On the morning of 15 December 2011, he along with 20 other patients had his dressing removed. He was very happy to have a better vision after 22 long years.

After the final checkup by the medical team and counseling about post operative eye care, Man Bahadur Thapa walked home as a satisfied man. Sunsari,



Susan Kathayat
Executive

Artificial Limb Fitment – Boosting Amputees’ Lives

“A child is only as disabled as their environment and the beliefs of the people around them.”

- Bala Pillai DPT, PCS

The Artificial Limb Fitment Camps helped **476**
beneficiaries get **508** prosthetics

CG Mahaveer Sabal Center provided **67**
numbers of prosthesis limbs since the
establishment

Chaudhary Foundation in partnership with Bhagwan Mahavir Viklang Sahayata Samiti-Jaipur Foot, the Embassy of India and with support of Norvic International Hospital and Sahaj Community Hospital conducted two Artificial Limb Fitness Camps in Kathmandu and Nawalparasi in January 2019. More than 50 beneficiaries received prosthesis



legs at Norvic International Hospital in Kathmandu and another 450 at Sahaj Community Hospital in Nawalparasi.

During the camp, we got the opportunity to interact with diversified beneficiaries and every individual had their own story about the loss. We came to realize that loss of limbs can be devastating as individuals have to put up with varied challenges ranging from mobility to discrimination.

Amputees who received prosthesis limbs later reported improvement in their quality of life. The artificial limbs gave them a boost and helped overcome mental trauma, anxiety and social bias. Nepal Census (2011) reported around two percent of the total population having "some form of disability;" It is estimated that 36.3 percent of the disabled population have physical disabilities. Furthermore, the 2015 earthquake likely led to an increase in the number of disabled persons.

Taking into account the statistics, Artificial Fitment Camp in Kathmandu and Nawalpur was a success. Hence, Chaudhary Foundation went on to establish CG Mahaveer Sabal Center at Nawalpur to provide artificial limbs and other aids to as many individuals in need throughout the year rather than only during the short-lived fitment camps. The Foundation has provided 67 numbers of prosthesis limbs since the establishment of the Center.

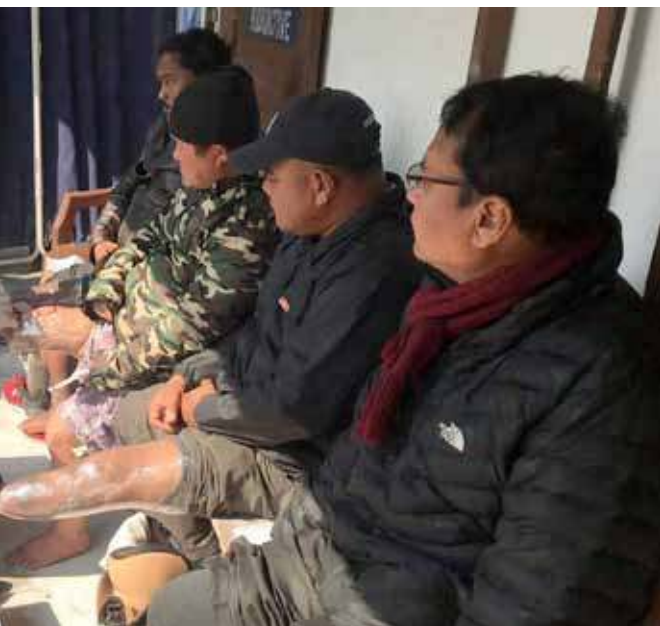


Impact Story

Bikash Tamang, 25, from a small village in Lamjung was born without a limb from below the knee. As a child, he never felt anything missing; as he grew up he realized the difference between him and others. An ardent football fan, he would play football using a stick to support himself. However, he was highly dependent on his parents and siblings as he needed assistance to go about his daily life like going to the toilet, walking, cooking, etc. But, all this has changed.

Bikash is one of the beneficiaries of the Artificial Limb Fitment Camp organized by Chaudhary Foundation at Sahaj Community Hospital, Nawalpur in January 2019. He is glad that he no longer has to depend on his family. He has also found a job at CG Mahaveer Sabal Centre, a permanent centre operated by the Foundation to provide artificial limb fitment following the successful camp.

It is estimated that there are 100,000 people in Nepal without limbs. The centre aims to support this population by providing artificial limbs and post fitment care throughout the year, free of cost. Chaudhary Foundation hopes to help make many more lives a bit easier.





Pratap Kharel
Senior Manager

“

With 'Building Back Better' as a key principle, Chaudhary Foundation after completion of temporary shelter project provided support to the families of Ghairung area to help install water pipes.

”

Water and Sanitation

Gorkha Water Supply

The devastating earthquake of April 2015 had affected millions of lives here in Nepal. With thousands of lives lost and many more injured, the natural calamity hit a severe blow to our nation. Immediately after the earthquake Chaudhary Foundation (CF) with its Post Disaster Response and Management team mobilized rescue, relief and recovery efforts. With support from various partners worldwide, Chaudhary Foundation moved into

CF successfully completed the water pipe installation program to **117** households in the VDC. CF also constructed 5 water tanks with capacity from **4,000** liters to **8,000** liters for storage and fitted water pipes to all **117** houses.





action and started making temporary shelters and schools in 10 out of 14 highly affected districts. One of the worst hit areas, Gorkha, the epicenter of the earthquake, Chaudhary Foundation mobilized its team to build temporary shelters there as well. There Chaudhary Foundation built 279 temporary shelters in 5 VDC. One of those VDCs - Ghairung - had also faced problems with water supply. The earthquake had damaged the main water source of the village leaving families there without a proper water supply system.

With 'Building Back Better' as a key principle, Chaudhary Foundation after completion of temporary shelter project provided support to the families of Ghairung area to help install water pipes to their houses. With support from various partners as well as villagers, CF successfully completed the water pipe installation program to 117 households in the VDC. CF also constructed 5 water tanks with capacity from 4,000 liters to 8,000 liters for storage and fitted water pipes to all 117 houses.

Providing Clean Drinking Water

According to the World Health Organization (WHO) "Safe drinking water, sanitation and hygiene are

crucial to human health and wellbeing." Safely managed drinking water and sanitation not only helps prevent diseases but also contributes to improved livelihood. According to UNICEF around 3.5 million people in Nepal do not have access to basic water services.

Chaudhary Foundation has always believed that access to clean water is a basic human right. Chaudhary Foundation has been ensuring this right and upgrading living standards through the "Safa Pani Swacha Baani (Clean Water, Healthy Habit)" Project. The Foundation supports healthy and safe drinking water and capacity building activities including information dissemination, education and communication (IEC) materials, community awareness, providing clean and safe drinking water to schools and maintenance of WASH facilities.

In 2018, Chaudhary Foundation and Planet Water Foundation, a US-based NGO working in various parts of the world providing access to clean, safe water to nearly one million children, teamed up to provide sustainable community-based water filtration systems at five schools in Nawalpur and Chitwan district. The project is primarily focused on providing WASH facilities to school children and the community.



Atul Upadhyay
Chief Executive Officer, Baliyo Nepal

“

Baliyo Nepal is supporting the government by leveraging their expertise and resources.

”

Initiative to Reduce Stunting in Nepal

From 1995 to 2016, Nepal reduced its stunting prevalence from 68 to 36 percent through large-scale improvements in a health system that increased births in health facilities, improved sanitation practices thereby reducing diarrheal diseases, increasing school attendance, and improving richer diets. Resolving remaining challenges – increasing inequality and dependence on donors and NGOs – will enable Nepal to continue building on the progress it has made over the last two decades, and





attain the SDG targets. Moreover, the nation's Long-Term Vision 2043 to make "Prosperous Nepal, Happy Nepali" needs immense effort in multidimensional sectors, including improved nutrition.

Appropriate nutrition of a child begins with early and exclusive breastfeeding for 6 months, followed by optimal complementary feeding along with continued breastfeeding for 2 years and beyond. This will provide adequate macro-and micro-nutrients required for the growth and development of children. However, the existing multiple and conflicting drivers of food choices are pushing out nutritious foods with unhealthy snacks. Moreover, inadequate regulatory mechanisms and the recent COVID 19 pandemics have aggravated the challenges of attaining SDG nutritional targets.

Therefore, Baliyo Nepal Nutrition Initiative (BNNI) created the 'Baliyo Movement', a nutrition campaign adopting a holistic approach to address malnutrition. The movement is funded by the Bill & Melinda Gates Foundation, which issued a grant to the Chaudhary Foundation to launch, develop and scale Baliyo Nepal. The movement was officially launched by Rt. Honorable President of Nepal, Ms Bidya Devi Bhandari on November 1, 2019.

Baliyo Nepal is now governed by a diverse and independent board of leaders from Nepali Civil

Society. The major drivers of this campaign include i) partnership with the private sector for production, distribution, and market supply of healthier foods at affordable prices, ii) massive awareness through partnering with the wider private sector, communities, civil society, and the influencers to create market demand of these healthier foods and iii) policy advocacy and partnership with the government to adopt success measures into national-level policies, regulatory mechanism and communication strategies.

Finally, we aim to instigate behavior transformation in the community – making every child dream of reaching their fullest potential – using various aspirational and inspirational measures. Our interventions expand from schools to the communities and the private shopkeepers, who jointly rally around the Baliyo Nepal campaign in alleviating the malnutrition problem in the country. This will make every child in Nepal as mighty or Baliyo as the Everest – thus, the Baliyo Nepal!







LIVELIHOOD

Chaudhary Foundation believes livelihood and skill development are the most critical elements to upscale Nepal's economy. Many of our rural areas and even in urban cities, employment is one of the biggest challenges. Our Program is intended to create such economic transformation to people by skilling them and creating livelihood in order to make their living standards better.

Our programs within this sector focus especially on youth, women and indigenous groups and communities with traditional skills and cultural skills. Converting traditional and cultural values into economic benefits is the path Chaudhary Foundation is following in order to strengthen the overall economy of the country.

LIVELIHOOD



Surabhi Chaudhary
Director, Unnati



Chaudhary Foundation hopes to replicate the facility and art space across the seven provinces.



Art and Tradition: A Living Tradition in Nepal

Unnati is an initiative of the Chaudhary Foundation striving towards sustainable development through traditional livelihood programs and women empowerment. Unnati's philosophy revolves around the revival and survival of national heritage, culture and traditions through forms of crafts, dance, music, foods, language, and habitat. The essence is to bring the lost and found, old and new back into our everyday life.

Unnati Cultural Village

Unnati Cultural Village (UCV) is an Art and Craft hub located in Harkapur, Nawalpur District, Gandaki Province, under the livelihood program of Unnati focused on preservation and promotion of local art and culture. Chaudhary Foundation hopes to replicate the facility and art space across the seven provinces. Various components related to art, design and food have converged to celebrate the ethnic diversity of Nepal at UCV in Harkapur Farm. It is a one stop destination for those seeking cultural experience and a platform to showcase the indigenous livelihoods of Terai plains. It offers an opportunity to engage with artisans; a place to be inspired, to create and soak in this multifaceted diversity.





“LIVE THE EXPERIENCE”

- A one-stop destination for those seeking a cultural experience
- Platform to showcase the best forms of indigenous livelihoods of the Inner Terai
- A place to be inspired, create and soak in this multifaceted diversity
- Opportunity to engage with artisans and craft practitioners

VARIOUS ELEMENTS OF UNNATI CULTURAL VILLAGE

ART & CRAFT

PAUVA - ART GALLERY

A space for art and craft enthusiasts. Artists can use this space to display high-end art and crafts developed at the property or outside.

KALA BATIKA - GARDEN OF ARTS

Open Air Garden of Arts, exhibits exquisite art pieces made of ceramic, glass, clay, and stone that weather and mold with the environment and blend into the natural seeing.

NISARGA SAYAR - ART WALKWAYS

A nature and cultural walk-through open-air galleries of outdoor sculptures along a defined route with lotus ponds and art installations. The art installations are co-created by some of the finest Nepalese artists.

CRAFT MUSEUM

The museum is an endeavor to show the relevance of history, demography, and socio-economic factors in the creation and production of arts and crafts in Nepal. The collection includes artifacts such as textiles, metal crafts, sculpture, jewelry, silver-work, stone-works, wood-works, folk/tribal paintings, bamboo craft, and clay and terracotta figures.

NEPAL CRAFTS

UCV offers a creative studio space dedicated to trainings related to design and innovation. Over the recent years, Unnati has invested in designing and delivering training to artisans and groups.

THE ATELIER

The literal translation of the word ‘Unnati’ is prosperity. ‘Unnati’ passionately believes in selling and supporting the art of Nepalese artists, makers, and designers. The brand “Unnati” is created and promoted for product range development.



CULTURE

THARU GAAM

The “Tharu Gaam” stands to deliver an experience with the intricacies of cuisine, art, and artifacts that integrally represent the life and livelihood of the Tharu community. It is an Open Tharu Museum where culture meets forgotten lifestyles, traditional practices, festivals, language, customs, cuisines, etc.

BAHARI [LIVE KITCHEN]

Tharu Kitchen presents the flavor and spices of Tharu recipes that have been post-drawn from generations using traditional techniques. The open live kitchen offers on-the-spot cooking, where guests can experience traditional cooking practices with local ingredients.

BADA GHAR [DINING]

Tharus traditionally lived in Badaghar - longhouses with big families of up to 31 members from four generations and between one and eight married couples. This traditional lifestyle is slowly disappearing, hence, UCV hopes to bring lost and found, old and new back into our everyday life.



GADALA MOD [BAR]

Gadala – Mod (Bar) is an enchanting indoor and outdoor bar near a cultural performance area that offers a view of the lotus ponds, litchi and mango plantations, and cultural artworks. Gadala – Mod offers hand-crafted local wine.

DABALI - CULTURAL PERFORMANCE AREA

Dabali is a cultural platform for performances, theatre, music, and dance. It is a space where ethnic, cultural, and traditional artists get promoted, showcased, and celebrated by tourists, families, and art enthusiasts.

GUEST SPACES

KALA GHAR - AN ART HOTEL

The Art Hotel is an exclusive hotel space with a special arrangement for experiencing the delights of Fine Arts. The high-end craft interiors, charming accommodation, and a first-hand experience of creating one’s own masterpieces create a memorable experience for any traveler or art enthusiast.

BODHI KUNJA – ART RESIDENCY

Bodhi Van provides a space for artists to be inspired and express themselves with freedom and creativity. UCV offers a tranquil and inspiring environment - a meditation space, to get their creative juices flowing.





DEHARI - THARU GHAR

A beautiful Tharu Ghar offers five rooms named after festivals celebrated by Tharu community;

1. *Jitiya*: A festival celebrated by married women
2. *Faguwa*: Holi - the festival of colors
3. *Maghi*: Tharu New Year
4. *Anat*: Historical shepherd game
5. *Amosa*: Ancestor Worship Festivals

ATITHYA - MULTIPUPOSE BLOCK

Atithya is a multipurpose block with a unique cultural experience, rich ethnic decor, foods, and performance to make any occasion special. The space is ideal for corporate retreats, festivities, ceremonies, and celebrations, with a standing capacity of 200 people.

EXPERIENCES

ART & CRAFT

The long-term vision of UCV is to establish a common platform as a symposium of design where urban and rural and national and international artists and artisans of various forms can co-work and co-create creativity.

THARU CULTURE

Nawalpur valley is part of inner terai populated by Tharus, along with Magar, Brahmin, and Thakuri. "The Tharus", are the indigenous tribes living in inner Terai valleys and the Terai plains of Nepal. UCV serves as an experience of Tharu culture that bounds aesthetics defining the concept of beauty and evocativeness.

ETHNIC CUISINE

Every ethnic group and community in Nepal have their own or variance in food culture, traditions and

way of cooking. Unnati Cultural Village at Bahari (Live Kitchen) offers Tharu and Thakali cuisine, along with traditional Nepali cuisine. The Tharu food culture is largely characterized by the fertile flooded plains, forests, and environment they live in.

HOSPITALITY

Cultural Guest Spaces and Restaurant is the hospitality component of UCV, comprising luxury and traditional accommodation and banqueting.

ORGANIC FARMING

The organic garden is one of the most important elements of the village. This garden will be growing various vegetables used in the kitchen.



Impact Story

Sabita Maharjhan, 45, resident of Kritipur – 3 is passionate about textile-based craft and produces a range of knitted products and handicraft items. Sabita runs her own cottage industry, 'Kritipur Hosiery Industry' (KHI). She has been impacting women through the cooperative that she started along with Kritipur Hosiery.

She has been involved with Chaudhary Foundation's activities since 2017. KHI has made official jackets and T-shirts for the Foundation and also designed Nepali Chaubandi Cholo (Blouse), Daura-Suruwal (Traditional male dress), and handknitted sweater for Unnati.

She is grateful to the Foundation for having included her in various trainings that have helped her in managing her cooperative; making product choices and marketing. "The Foundation's continuous support has exceeded my expectations as they have helped with market linkages for KHI. We are in the process of creating our own brand and market linkages are really helpful. I hope the Foundation continues to touch the lives of as many people as possible," said Sabita.



CULTURE & SPIRITUALITY

Chaudhary Foundation believes that preserving culture and heritage brings inner peace and tranquility to the people. CF's programs are designed to promote and preserve the rich and diverse cultural and spiritual heritage.

CULTURE &



Narayan Shrestha
Senior General Manager

Shashwat Dham – A Blessing of Hindu Temple

Shashwat Dham is a spiritual destination located at the scenic foothills of Nawalpur District in Gandaki Province of Nepal. Spread across 12 verdant acres, Shashwat Dham aims to be a destination for learning – combining Sanatan Dharma and spiritual growth. Explorers, spiritual seekers and nature lovers alike can visit Shashwat Dham to discover ancient knowledge and inner peace.

The idea of Shashwat Dham was conceived two decades ago when spiritual leader Param Pujya Shankaracharya, Sri Jayendra Saraswatiji Maharaj visited Nepal. At the time he had mentioned the lack of Karma Kanda Pundits, well versed with Vedic knowledge and practices to Binod Chaudhary, Chairman of Chaudhary Foundation. This later

“

The idea of Shashwat Dham was conceived two decades ago when spiritual leader Param Pujya Shankaracharya, Sri Jayendra Saraswatiji Maharaj visited Nepal.

”





inspired Chaudhary to build the temple. Shashwat Dham has a Gurukul within the premises, dedicated to nurturing true pundits who uphold and preserve the spiritual and religious values of Sanatan Dharma. Shashwat Dham is currently hosting 27 Batuks.

Shashwat Dham was inaugurated on 7th of March 2016 by Honorable President of Nepal, Bidhya Devi Bhandari. Sri Sri Ravi Shankar and former King Gyanendra Bir Bikram Shah Dev attended the inaugural ceremony that saw the presence of prominent Dharma Gurus, leaders, civil leaders, and

professionals from across the globe.

With the stunning Ekambareshwar Shiva Temple, a Buddhist centre and a yoga retreat, the site attracts visitors from all walks of life. Shashwat Dham conducts cultural events and has two museums, Hindu museum and Nirvana Museum. Hindu museum located at the basement of Ekambareshwor Mahadev is dedicated to Hindu ideology, philosophy, scriptures, history and traditions, while Nirvana museum is dedicated to the life of Gautam





“

the site attracts visitors from all walks of life. Shashwat Dham conducts cultural events and has two museums, Hindu museum and Nirvana Museum.

”

Buddha. Shashwat Dham conducts guided tours and discourses and motivational talks. To promote and conserve the rich cultural heritage of Nepal, Shashwat Dham celebrates major festivals within its complex.

Shashwat Dham also supports more than two dozen Sanskrit schools in the region. It has been supporting nearby Hindu temples in their operations and contributing towards renovation of various temple complexes like Bishnu Paduka in eastern Nepal. Shashwat Dham offers yoga and meditation courses. The courses are conducted by professional Yoga / meditation trainers to help participants connect to the roots of the religion. Shashwat Dham also offers services like puja Bratabanda, Marriage and special online e-puja service. Shastwat Dham is working towards being Nepal's 1st Smart Temple.

Shashwat Dham also has a Gaushala - protective shelters for cows, within the premises. The Gaushala is home to Naumuthe cows of Achham, which are indigenous to the country but is now on the verge of extinction.



Pashupati Area Revitalisation

Pashupati Aryaghat Revitalisation Project was launched by Chaudhary Foundation following an agreement with Pashupati Area Development Trust (PADT) in 2015. As part of the CSR project, the Foundation helped renovate Pashupati Aryaghat area.

The Pashupatinath Temple is a famous and sacred Hindu temple complex listed in the UNESCO World Heritage site. Thousands of pilgrims visit the temple every year. However, despite its religious and archeological importance, the preservation of the area is lacking. Chairman, Mr. Binod Chaudhary became determined to renovate the Aryaghat area upon seeing its dilapidated state when he went to



Mahesh Raj Pant

Member, Chaudhary Foundation



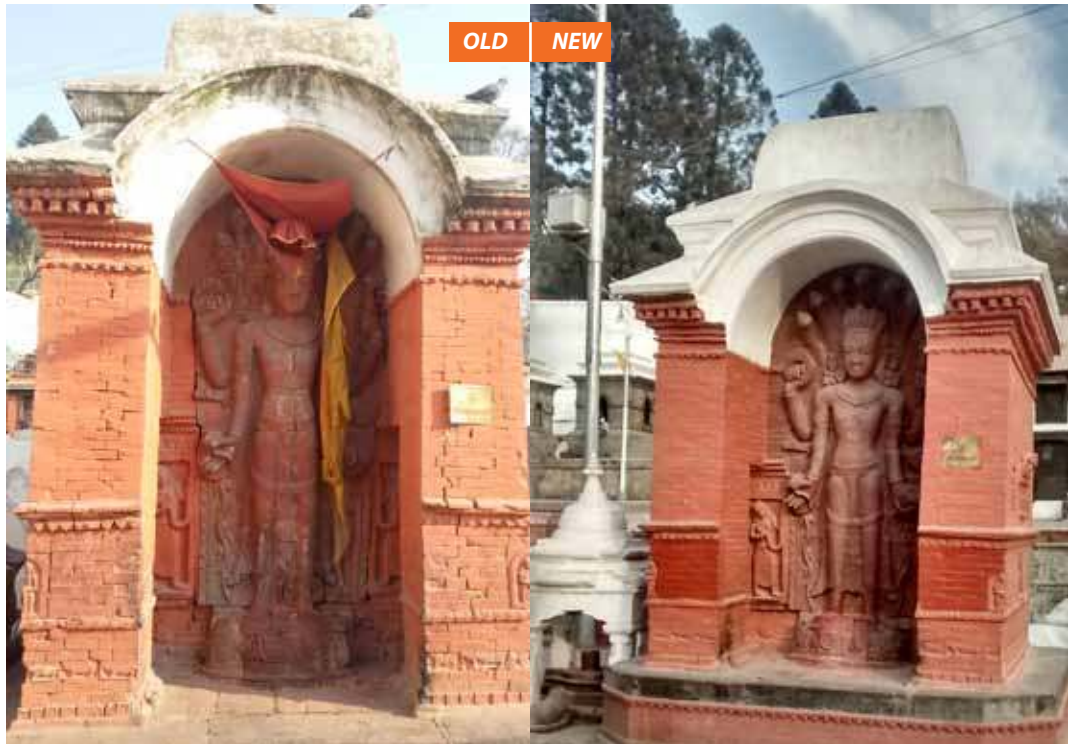
This project is at the heart of the Chaudhary Foundation's cultural preservation projects. Chaudhary Foundation places particular importance in preserving and promoting Nepal's rich and diverse cultural heritage.



OLD



NEW



cremate his mother in 2001. He felt the complex needed to be renovated and preserved as people deserve dignity during their last rites.

This project is at the heart of the Chaudhary Foundation's cultural preservation projects. Chaudhary Foundation places particular importance in preserving and promoting Nepal's rich and diverse cultural heritage. Till date, the Foundation has successfully restored Anantanarayan temple, Batsaleswori temple, Batsaleswori pati, Mangala Gauri temple, Panchaganesh temple, Entrance gate, and water spout within Pashupati Aryaghat area. The project was carried out with the support of various government and international stakeholders.

On July 7th 2017, Mr. Chaudhary had handed over the completion report of the Pashupatinath Aryaghat Renovation Phase 1 project to Dr. Govinda Tandon, member secretary of Pashupatinath Development Trust. His Excellency Mr. Manjeev Singh Puri, then Ambassador of India to Nepal was the chief guest at the event. Mr. Puri also inaugurated the temple of Mangalagauri on the premise of Arayaghat.

Chaudhary Foundation considers the conservation of religious and historical monuments as its moral obligation and hopes to continue working in the preservation of such heritage sites.



53.



Our Partner's Message

Dr. Ruth A. Shapiro, Ph.D.

Co-Founder and CEO
Centre for Asian Philanthropy and Society

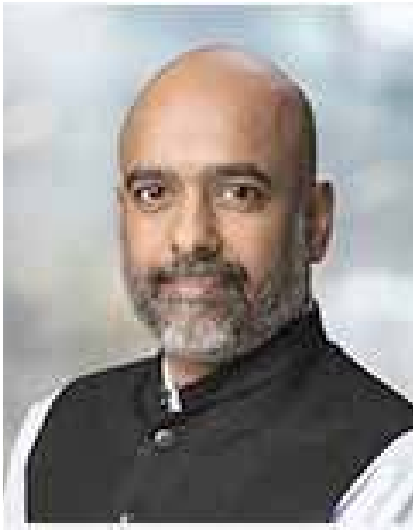
We have had the wonderful opportunity to work with the Chaudhary Foundation over the past few years. Specifically, the Foundation is our partner in carrying out the Doing Good Index (DGI) in Nepal. The DGI is a study which looks at the factors which enable or hold back the flow of private resources toward doing good. Throughout this project, the Chaudhary Foundation has proven themselves to be highly professional, insightful and collaborative.

But working with the Chaudhary Foundation moves far beyond one project. The Foundation and most especially its leadership, Binod and Nirvana Chaudhary and Merina Ranjit, understand what it takes to bring about meaningful change for the improvement of our communities. They understand how it takes all parts of society – the government, the companies, the non-profit organizations and everyday people to bring about durable solutions. They understand how to bring people and organizations together and are not afraid to use their incredible platform and influence to do just this.

Nepal is a poor country beset by numerous challenges but the Chaudhary Foundation thinks both big and pragmatically. They work on large ideas while at the same time putting in place practical solutions which change people's lives. They think in the short, medium and long term simultaneously.

It is a joy and an honor to work with them.





Our Partner's Message

Hari Menon

Director

Bill & Melinda Gates Foundation, India Office

"It is both heartening and inspiring to learn about the Chaudhary Foundation's focused and determined efforts towards addressing the malnutrition challenge in Nepal, as it simultaneously continues to comprehensively contribute towards positive social transformation of the country. The Gates Foundation works towards healthy and productive lives for all, and appreciates the opportunity to collaborate with like-minded partners. We are in this together, and are hopeful that collectively we will bring sustainable change that would make a positive difference in the lives of the poor and the vulnerable, especially the lives of women and girls. We appreciate this partnership and the significant contributions being made by the Chaudhary Foundation."

Nirvana Chaudhary with Jack Ma (extreme left), Founder, Alibaba Group, Phumzile Mlambo-Ngcuka (second from left), Executive Director, UN Women, and Melinda Gates, Co-Chair, Gates Foundation at "Making Every Woman and Girl Count" Launch Event



WHERE WE WORKED

CHAUDHARY FOUNDATION PROVINCIAL OFFICES	
PROVINCE	HEAD OFFICE
Province-1	Biratnagar
Province-2	Birgunj
Bagmati	Kathmandu
Gandaki	Pokhara
Lumbini	Butwal
Karnali	Managed by Bardiya
Sudurpaschim	Dhangadi



Chaudhary Foundation has expanded its reach to all seven provinces and has already established provincial headquarters.

In addition, Chaudhary Foundation India, the regional extension of Chaudhary Foundation was also launched in 2020.



Riya Kumari Kushwah,
6 years old from Birgunj,
walking for the first time in
three years after receiving
prosthetic limb at the
Artificial Limb Fitment
Camp. She had lost her
right leg in a bus accident
when she was 3 years old.

Chaudhary Foundation Globally



Varun Chaudhary
Executive Director

“

Foundation believes that investing in a health care system is the key to improving the quality of life

”

Chaudhary Foundation India

‘Chaudhary Foundation India’ is the regional extension of ‘Chaudhary Foundation’ which is the veteran CSR arm of CG Corp Global, based out of Nepal. Chaudhary Foundation India’s approach towards social initiatives is deeply rooted in the spirit that drives this rich history of philanthropy. Officially



established in 2020, Chaudhary Foundation India strives to support the vulnerable communities by addressing the socio-economic challenges and implementing innovative and impactful programs. With India's position as one of the top 10 economies in the world, the country needs to channel social impact initiatives and funds to marginalized regions and communities, to ensure a balanced development. Chaudhary Foundation India recognizes this need and aligns its outreach to this shared goal by working closely with the governments, community groups, academic institutions, industry veterans and non-profit organizations.

The foundation aims to improve lives and strengthen communities by socially impactful research on under-served and under-funded causes and targeted approach towards classifying and tracking investment into key beneficiary causes. Some of the key activations initiated to achieve this aim include devising sustainable ecosystems, funding health initiatives and driving relief support programs. Giving back to the community is a deeply ingrained value in each member of the CG Family. Chaudhary Foundation India manifests this value by catalyzing the journey of establishing equal value for every individual.





Irina Strajescu

Communication and Events Director, Moldcell

“

With the support of Moldcell Foundation, ARTCOR School will introduce educational courses, workshops and open lessons in online and offline format for young people ...

”

Moldcell Foundation

In 20 years of its existence, Moldcell, apart from being a high quality network and accessible mobile communication, has positioned itself as a benchmark for Corporate Social Responsibility in Moldova by implementing and supporting hundreds of social and philanthropic projects.

Inspired and encouraged by the activity and results of Chaudhary Foundation, Moldcell recently launched Moldcell Foundation – a platform that will unite all the company initiatives in social responsibility. The event took place on October 20, 2020 in ARTCOR center and was attended by USA Ambassador in Moldova Dereck J. Hogan, Vice-Chairman of Chaudhary Foundation and President of Moldcell Foundation, Nirvana Chaudhary, creative community, and Moldcell Board of directors.

Moldcell Foundation's mission is to positively impact the lives of Moldovans by combining digital transformation and use of technologies based on its





Digital Responsibility key areas: Education, Society, Social Impact Investment and UN Sustainable Development Goals support.

Moldcell Foundation was launched along with the signing of Memorandum of Understanding between the Association of Companies from Creative Industries in Moldova for Competitiveness Project of Moldova – to extend digital education opportunities in the Creative Industries Center, ARTCOR, funded by USAID and Moldcell Foundation.

With the support of Moldcell Foundation, ARTCOR School will introduce educational courses, workshops and open lessons in online and offline format for young people interested in creative profession in interior design, design and sound production, music, podcasting, illustrations, comics, 3D animation, storytelling, etc. Creative professions and those related to technologies and freelancing are the most desired professions among youth.

Apart from the launch of the Foundation, Moldcell was actively involved in COVID-19 response. Moldcell helped the health sector of Moldova by providing 10 lung ventilation equipment pieces for 8 hospitals, 5000 protection suits for medical staff, free minutes and Internet, and free daily hot lunches for the doctors, the heroes of our times.

Other noteworthy undertakings of Moldcell include Mobile Marathon Project, launched in 2015 to teach elderly population how to use Internet and smartphones. The project has evolved now into

#LikefromGrannies project encouraging teenagers to teach their grandparents to use digital services, social networks and Internet. Equally impactful was the Internet Without Worries Project– an educational project about online safety for kids and parents launched by Moldcell back in 2018.

Now, with the official launch of Moldcell Foundation, we hope to make a difference in the lives of Moldovans.





Preet Singh

General Manager, The Farm at San Benito

“

With the support of Moldcell Foundation, ARTCOR School will introduce educational courses, workshops and open lessons in online and offline format for young people ...

”



The Farm at San Benito, Philippines' CSR

The Farm at San Benito, one of the top health and wellness destination in the world and a property under CG Hospitality, takes pride in its continued Corporate Social Responsibility (CSR) efforts in the Philippines.

This year, in response to the COVID-19 pandemic, The Farm consciously adopted nearby communities by providing vital aid in terms of food, personal protective equipment, disinfectant, and rapid antibody Covid-19 testing. We donated PPEs to support the frontliners in San Benito.

We are also supporting Lipa City COVID-19 Isolation Facility by donating organic eggs, unpolished brown rice, disinfectant and face masks to Covid-19 patients.

Apart from this, we took the lead in providing immediate relief after Taal Volcano erupted in the province of Batangas in January, 2020. We reached out to a number of families through rice donation program. A total of 227 employees of The Farm including the on-call personnel also received rice support from the company.

After facing the challenge of Taal Volcano Eruption and continuous battle with COVID-19, the province of Batangas experienced another blow brought by three major typhoons namely Typhoon Quinta, Rolly and Ulysses. Many families and communities

63.



were affected and lost their houses and livelihood. The Farm, for its part, will be distributing old linens, clothes, food, PPEs, masks, alcohol, etc. to locals and nearby communities affected by the calamity.

The Farm is collaborating with World Wildlife Fund's (WWF) campaign "Project Silong" which aims to help victims of Super Typhoon Rolly. The Farm joined the call to support and provide food, water, building materials, solar lamps, and hygiene kits to the fishing communities of Lagonoy Gulf, in Albay and Camarines Sur which were battered by Super Typhoon Rolly – leaving hundreds of fisher families without food and water, roofs above their heads, and boats for their livelihood.

The Farm also launched "Purchase with a Purpose" campaign with the motive to donate a portion of the proceeds to communities and families affected by the recent typhoons.

In addition, The Farm has supported WWF's digital fundraising event entitled Kawali-Kasan: A Sustainable Home Cooking Series through The Farm's Kitchen Klinik and call for donations. The Farm's medical director, Dr. Susan Balingit launched the "Kitchen Klinik" segment as part of her advocacy to educate people on health benefits gained from sustainable local produce and functional food.

Back in 2016-2018, The Farm was involved in various feeding programs for nearby communities and

"Operation Tuli" which gave free circumcision to 37 young men headed by The Farm's medical doctors Dr. Michelle Carbonel and Dr. Radi Apostol.

The Farm hopes to continue to positively impact the needy communities in the days ahead.





Madhu Sudan Poudyal
General Manager

Chaudhary Foundation Transforming Lives Everyday

Chaudhary Group's Chairman Binod K. Chaudhary has often been quoted saying, "My priority now is social work rather than business."

Business in layman's terms is a collaboration with society. Society plays an important role in the success of a business. Hence, it is the duty of all businesses to be socially responsible.

With social responsibility in mind, Chaudhary Foundation was founded in 1995. Since then, Chaudhary Foundation has established itself as an integral part of the society. In the past 25 years, we have been successful in creating a commendable history. This was only possible with the encouragement and love we have received.

We feel humbled that the Nepali society has embraced Chaudhary Foundation as its guardian. This gives us an increased sense of responsibility. Sometimes, the society looks up to us instead of the government. Hence, today our primary responsibility is to live up to that level of trust that we have instilled in people.

Following the devastating earthquake in 2015, Chaudhary Foundation was the first to reach out to earthquake-hit settlements with the promise of transitional shelter. I still remember when we reached Dolalghat, Kavre, the locals were looking at their ruined homes in despair. When we proposed to build a 'Transitional Shelter' for the displaced families, their faces lit up. We immediately held meetings with the locals and deployed a team for the purpose. The 200 houses with shining corrugated sheets in Dolalghat were built by the Foundation. Chaudhary Foundation handed over more than 3000 transitional houses in villages in 10 worst hit districts. For earthquake victims from Giranchaur, Sindhupalchowk, 62 concrete houses are under construction.

We are not competing or comparing ourselves with anyone. However, the fact that we alone provided this level of service to earthquake victims gives us immense satisfaction.

Furthermore, we place equal importance in children, who are our future. In order to recover from the natural disaster of 2015, rebuilding homes were our first priority and schools our second. Unless schools were rebuilt, education of children would be affected. Therefore, besides building homes for those rendered homeless, we helped rebuild 40 schools. Our particular focus on children was the reason our team immediately left for Bardiya to help rebuild the six schools damaged by flood carrying educational materials for students from those schools.

We are now prioritizing establishment of digital classrooms, with the belief that the new generation should receive world-class education. We have also installed 'water filtration' plants in schools to ensure children have access to healthy drinking water. We are confident that in today's age of information technology, it is possible to provide education

comparable to that of developed countries to every child in Nepal.

Likewise, we would like to believe we have made a difference in people's lives. People without limbs, who considered themselves a burden to their families, are now able to take care of themselves and their families. More than 500 people got a new life through artificial limb fitment camps organized in Kathmandu and Nawalpur. For the first time in their lives, beneficiaries were able to walk on their own. The happiness on those faces is what Chaudhary Foundation strives for.

Our Chairman Binod K. Chaudhary has reiterated time and again that seeing happiness on such faces makes his life meaningful.

Chaudhary Foundation hopes to make a lasting impact in the lives of people. We do not want to provide food to the hungry, but help them produce food. Our social business initiative is an example of this. A man can stand on his own feet only when he is capable. Henceforth, our emphasis on the promotion of social business. For those who have ideas but lack capital, social business can change their destiny.

Whether it is flood affected Terai region or landslide prone hilly regions, it is now an assumed responsibility of Chaudhary Foundation to reach out to victims of natural calamities.

Additionally, Chaudhary Foundation has been involved in the preservation and promotion of Nepal's cultural heritages. On one hand, the Foundation has established Shashwat Dham – a spiritual destination in Nawalpur while on the other we have helped renovate Pashupati Aryaghat area – a UNESCO World Heritage site. This initiative hopes to help bring inner peace among the people.

Equally important and impactful is Unnati – an initiative of Chaudhary Foundation promoting sustainable development of traditional livelihood programs and women empowerment. Unnati is an attempt to safeguard national heritage by upholding traditional forms of crafts, dance, music, food, language, and habitat and also improve financial

standing of traditional artisans. Chaudhary Foundation has established the first center of excellence for SMEs and artisanal community of Nepal at 'Unnati Cultural Village' (UCV) at Harkapur in Nawalpur District. UCV is a celebration of the ethnic diversity of Nepal through arts, crafts, culture, and cuisine; it aims to be a one stop destination for those seeking cultural experience.

Currently, we are battling the global health crisis, Covid-19. The pandemic caused by coronavirus, is perhaps one of the most difficult times faced by mankind. With millions of confirmed cases and over a million deaths across the globe, the war against the invisible enemy is far from over. Our Honorable Chairman Binod K. Chaudhary and many colleagues were also infected. We are yet to get respite from this pandemic, but the Foundation has been doing its bit during these testing times.

It was in March, the initial days when just a few coronavirus cases had been detected in Nepal, a special meeting was held at Managing Director Nirvana Chaudhary's meeting room to review our possible contribution. At the time, doctors were in a state of panic and were refusing to check up on patients with fever. Therefore, we decided to prioritize boosting the morale of doctors and decided to distribute PPEs, masks and sanitizers in hospitals across the country. It was thanks to the dedicated team of the Foundation that protective gears were made available to hospitals from Mechi to Mahakali at a time when the government had not even started the process of purchasing them. Our campaign to protect the citizens which started with distributing PPEs extended to providing PCR reagents and ventilators to hospitals.

We know there are a lot of expectations from Chaudhary Foundation. However, we humbly request everyone to understand our limitations. Nonetheless, we are willing to join hands with similar philanthropic organizations and continue to bring happiness to Nepali faces.

And, I would like to repeat again, it is because of the immeasurable love we have received that we stand today to celebrate the glorious history of 25 years and make a commitment to serve people.

Acknowledgement

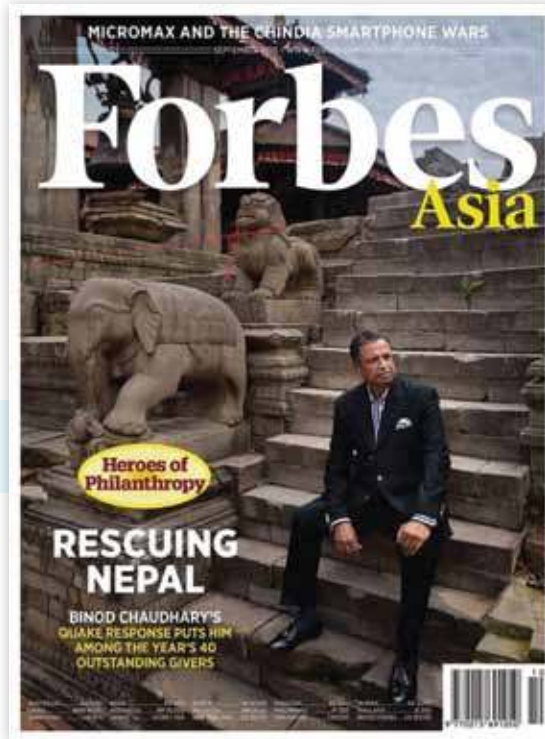
We would like to take this opportunity to express our appreciation for everyone who have helped Chaudhary Foundation throughout the journey of 25 years. This report is dedicated to our board members, partners, donors, beneficiaries, Chaudhary Foundation team and every individual who have supported and guided us.

Chaudhary Foundation has come a long way since its establishment in 1995 as a social initiative of Chaudhary Group. When we first started we were like any other charity organization, donating for social causes. And today, we are recognized as the number one corporate-social organization in Nepal. We strive to provide impactful community development initiative in a sustainable manner. Our every endeavor is focused on providing a better future for every individual, every family, every community and every country. All our projects and initiatives are guided by determination to create social impact leveraging our corporate strength. CG's employees from various business verticals have contributed their valuable time in most of our social initiatives.

Such employee engagement has become major corner stone for successful and efficient implementation of social programs. The collaboration between the business and Foundation team that especially started with 2015 Post Disaster Relief program has now become the well accepted system at CG. We would like to acknowledge the collaborative efforts of CG family and we hope this tradition will continue as we scale greater heights in forthcoming years.

Finally, we would like to acknowledge our partners' contributions. Our partners have been integral to our success. Their support and assistance have helped make our projects more impactful. And, we look forward to continued collaboration with all of our partners.

NEWS



NEPAL

REBUILDING NEPAL
Binod Chaudhary 60
PRESIDENT, CHAUDHARY GROUP

After a 7.8 Richter scale earthquake rocked central Nepal on Apr. 25, Binod Chaudhary and 2 of his sons rushed from Chitwan National Park to Kathmandu to organize relief efforts. The company's head office was heavily damaged, but no matter. He immediately ordered that 8 schools operated by one of his businesses be turned into shelters, distributing the company's famed Wai Wai instant noodles and other food, and juice, water and medical supplies. He also arranged for health care workers to reach victims in the 12 districts most severely hit by the country's worst natural disaster in 81 years.

Since then Nepal's first billionaire has pledged \$2.5 million through the CG Foundation to restore schools and homes destroyed or damaged by the quake. By last month it had built 300 temporary bamboo-and-plaster houses; the aim is to complete construction of 3,000 by October. It will also rebuild 100 primary schools.

The 20-year-old foundation has sponsored more than 300 scholarships in Nepal, underwritten eye care for thousands of the elderly poor, and supports youth sports, micro-enterprises and the arts. The company began with his grandfather's fabric shop, and his father opened the first department store in Kathmandu. CG now boasts the slogan "Taking Nepal to the World" and employs 6,000 on 5 continents, with interests in cement, autos, banking, energy and hotels. It still hasn't been able to move back into its head office. —Susan Cunningham

online:khbar.

भूमिपति पिकाडमा 'चौधरी आश्रय'को महलम

१० वर्षीय आश्रयको 'भूमिपति' पिकाडमाको 'चौधरी आश्रय'को महलमको उदघाटन गरियो। उदघाटन कार्यक्रममा बहुराज्यीय तहमा आश्रयको महलमको उदघाटन गरियो। उदघाटन कार्यक्रममा बहुराज्यीय तहमा आश्रयको महलमको उदघाटन गरियो।

आश्रयको महलमको उदघाटन गरियो। उदघाटन कार्यक्रममा बहुराज्यीय तहमा आश्रयको महलमको उदघाटन गरियो। उदघाटन कार्यक्रममा बहुराज्यीय तहमा आश्रयको महलमको उदघाटन गरियो।

सेतोपाटी

चौधरी चारु र अनु वैदे द्रु पद्मसु जिनै विपुलीय भोटेर उदघाटन गरियो

आश्रयको महलमको उदघाटन गरियो। उदघाटन कार्यक्रममा बहुराज्यीय तहमा आश्रयको महलमको उदघाटन गरियो। उदघाटन कार्यक्रममा बहुराज्यीय तहमा आश्रयको महलमको उदघाटन गरियो।

Forbes
17th Issues: Southwestern Asia Fuel Shortage: What's Next? | From: My Trip to Nepal

Southwestern Asia is facing a fuel crisis. The shortage of fuel is causing a major problem for the region. The shortage of fuel is causing a major problem for the region. The shortage of fuel is causing a major problem for the region.

The lack of fuel, combined with the high cost of fuel, is causing a major problem for the region. The shortage of fuel is causing a major problem for the region. The shortage of fuel is causing a major problem for the region.

Southwestern Asia is facing a fuel crisis. The shortage of fuel is causing a major problem for the region. The shortage of fuel is causing a major problem for the region. The shortage of fuel is causing a major problem for the region.

The lack of fuel, combined with the high cost of fuel, is causing a major problem for the region. The shortage of fuel is causing a major problem for the region. The shortage of fuel is causing a major problem for the region.

Southwestern Asia is facing a fuel crisis. The shortage of fuel is causing a major problem for the region. The shortage of fuel is causing a major problem for the region. The shortage of fuel is causing a major problem for the region.

The lack of fuel, combined with the high cost of fuel, is causing a major problem for the region. The shortage of fuel is causing a major problem for the region. The shortage of fuel is causing a major problem for the region.

Southwestern Asia is facing a fuel crisis. The shortage of fuel is causing a major problem for the region. The shortage of fuel is causing a major problem for the region. The shortage of fuel is causing a major problem for the region.

The lack of fuel, combined with the high cost of fuel, is causing a major problem for the region. The shortage of fuel is causing a major problem for the region. The shortage of fuel is causing a major problem for the region.

Daily Star

From football without a limb to fitting limbs for a living

Saturday, 28 December 2019 00:30

Blasik Tamang used to play football with the support of a stick, today, he makes limbs for the disabled and gains new energy.

By Marianne David

It takes a special kind of strength to play football when you're playing without half a leg – and that's what Blasik Tamang is made of. He refuses to back down when faced with challenges, no matter how insurmountable they may seem.

As a child, Blasik, now 25, would play football casually, using a stick to support himself. It was clear from the start that he wouldn't let his disability keep him away from anything even close.

Today, he is still driven by the same spirit, determined to make a difference despite his disability and committed to helping others who are facing the same challenges.

Although he could play football as a child, there were many things he needed assistance with – getting about, going to the toilet, preparing meals and so on. He was highly dependent on his parents and siblings for many, many years. But today, all this has changed.

When people complain about getting a limb fitted or say it is hard to walk, I convince them by telling them my story. I explain how it is hard at the start, but we have to do our best on our own and we will get used to it. That's how I inspire them. I am very

Blasik Tamang on his workbench

Vice President of Chaudhary Foundation Kiran Chaudhary Hands Over 8 Ventilators to MoH

For Healthier People, Chaudhary Foundation Donates 8 Ventilators to MoH

Chaudhary Foundation, a leading health care organization, has donated 8 ventilators to the Ministry of Health and Population (MoH) to support the growing number of COVID-19 patients.

The donation of ventilators is a significant contribution to the health care system. The donation of ventilators is a significant contribution to the health care system. The donation of ventilators is a significant contribution to the health care system.

REBUILDING NEPAL: Binsu Chaudhary 60

REBUILDING NEPAL: Binsu Chaudhary 60

REBUILDING NEPAL: Binsu Chaudhary 60

REBUILDING NEPAL: Binsu Chaudhary 60

REBUILDING NEPAL: Binsu Chaudhary 60

REBUILDING NEPAL: Binsu Chaudhary 60

REBUILDING NEPAL: Binsu Chaudhary 60

REBUILDING NEPAL: Binsu Chaudhary 60

देश सञ्चार

देश सञ्चार

देश सञ्चार

देश सञ्चार

देश सञ्चार

देश सञ्चार

देश सञ्चार

देश सञ्चार

Chaudhary Foundation to run Doing Good Index survey in Nepal

Chaudhary Foundation to run Doing Good Index survey in Nepal

Chaudhary Foundation will run the survey for Doing Good Index (DGI) 2019 in Nepal. It is an annual survey that measures the social responsibility of companies and individuals in Nepal. The survey will measure the social responsibility of companies and individuals in Nepal. The survey will measure the social responsibility of companies and individuals in Nepal.

CG Foundation Extends Its COVID-19 Relief Response To NCR Region

CG Foundation Extends Its COVID-19 Relief Response To NCR Region

CG Foundation has extended its COVID-19 relief response to the NCR region. CG Foundation has extended its COVID-19 relief response to the NCR region. CG Foundation has extended its COVID-19 relief response to the NCR region.

