



ANNUAL REPORT

2017

CHAUDHARY | FOUNDATION

TOWARDS  
SUSTAINABLE  
SOCIAL  
REFORM

[www.chaudharyfoundation.org](http://www.chaudharyfoundation.org)

# MESSAGE FROM THE CHAIRMAN

The past year has been one of many challenges and opportunities for Nepal, from shaping Nepal into a Federal Republic to overcoming natural disasters. Through it all CG Corp Global and Chaudhary Foundation have been continually working with various stakeholders to make an impact in people's lives. Being strong in our core values and our conviction to helping the society have driven both our company and foundation to grow in this time.

Through our work we have been able to make an impact to people across the country. 2016/2017 has been a year to reflect, rejoice and remember; however, the future is one of promise, hope and action. The coming days of the Foundation excite me even more. With our programs and projects now being aligned to address the Sustainable Development Goals (SDGs) we are looking forward to new partnerships, programs and more impact at local, national and global level.

Chaudhary Group, as a multinational conglomerate of Nepal, has taken the leadership to internalize national and global targets of Sustainable Development Goal. Companies find many ways to internalize social issues or development issues; some focus on triple bottom line, some work through CSR, some through philanthropy etc. The key lies in execution and its level of impact; ultimately how it contributed the macro level goal of nation. We at CG highly leverage on our organization strengths and network to address social issues. In year 2018 we are excited that we will be working towards addressing Stunting Issue in Nepal in collaboration with CG FOODS. SDG for us is to support the national economy through our responsible business. It is to be able to address the social issue using our networks and strength of our business. And it is to be able to do our business in a way that we don't only generate our financial benefits but also social benefits.

This report takes you through the journey our Foundation has gone through and also highlights our way forward for the



coming year. In addition, the report provides an update on the endowment and financial results for 2073-2074 (July 2016 – July 2017) Nepali Fiscal Year.

As we continue into the 2074 – 2075 Fiscal Year, I would like to thank the Foundation team, friends and all our partners who have believed in us and walked, and will be walking, together in our journey.

With your support and encouragement the Foundation is where it is today and I am sure this continued support it will take Foundation to newer heights.

**Binod K. Chaudhary,**  
*Chairman*  
**Chaudhary Foundation**

# MESSAGE FROM THE MD



As I began to compose this letter, I realized how quickly a year has passed. It has been a year with many rewarding moments, as well as some challenges. Through a year of transition, we made solid progress on many fronts, including building out strategic platforms, while establishing exciting new ones. Thank you for making 2017 yet another remarkable year for Conscious Alliance! This year marked a decade of service for the organization. Our dedicated staffs have done an incredible job at expanding our outreach while strengthening our programs and services.

It is my belief that providing high-quality community development initiative to the society around Nepal in a sustainable manner is our greatest challenge. But it is also the greatest hope for a better future for every individual, every family, every community and every country.

Chaudhary Foundation works at the very center of this challenge, across the broadest base of any Foundation in community development. Every day, we are working to help people everywhere live longer, healthier, and happier lives. We recognize that with our global leadership comes a responsibility; which we consider a privilege. I'm pleased with how we are meeting that responsibility. That purpose was at work here in Nepal, when earthquake roared through so many communities last two years back most importantly, our people were there in their own communities. Immediately and without hesitation, they were on the front lines of response and relief efforts wherever and however they could. It is this example of caring by individuals that inspire caring in the whole community, and reminds me of how firmly and fundamentally compassion is woven into the fabric of our culture. This legacy of caring continues as we renew our commitment to philanthropy and citizenship all over the world. We will look to go beyond relief and rebuilding, and explore programs that will make communities more resilient and prepare them to endure any kind of disaster, be it natural or economic.

Our leadership in community development has been made possible by the belief in our mission that you share with us. I am committed to continuing the proud tradition of Chaudhary Foundation as a purpose-led organization, calling on the great range and diversity of our worldwide talent and capabilities. We will further dedicate ourselves every day to the responsibilities defined in Our Credo, the first being our responsibility to "society at large" every day. We'll also continue our commitment to our employees, and to the communities in which we operate and proudly call home. I would like to thank all the hard work and contributions of countless individuals, organizations, and institutions, 2017 was a historic year of activity and impact for the whole community.

**Nirvana Chaudhary**  
*Managing Director*  
**Chaudhary Foundation**

# EXECUTIVE SUMMARY

With a strong commitment “Towards Sustainable Social Reform” Chaudhary Foundation works for the up-liftment and development of the society. Whether in time of disaster response or enhancing livelihood of the people the foundation works closely with its stakeholders.

Chaudhary Foundation has continually ventured in the journey of philanthropy and vested its leadership in proving itself as the number one “Corporate-Social” organization in Nepal.

Constructing 3000 shelters in the earthquake-affected communities after the massive devastation of earthquake of 2015 in Nepal has been a milestone of the foundation’s Post Disaster Relief and Management initiative. Similarly, the Livelihood & Skill Development initiative has worked in skilling and up-skilling more than 6000 beneficiaries in various income generating jobs (masons, electricians, plumbers and mobile repair technician etc) creating an opportunity for people to become economically strong and live with dignity. Today, they are engaged in rebuilding and reconstruction of houses helping the Nation rise from the crisis. Such deliverables were possible only with a strong collaboration with other developing partners and private foundations, showcasing that partnership is crucial in the era of Sustainable Development.

Chaudhary Foundation has moved towards construction of permanent shelters in coordination with Nepal Reconstruction Authority (NRA). In the first phase, the Foundation has come up with The Model Village project where it is building 70 households for the earthquake-affected community in Sindupalchowk. Chaudhary Foundation’s approach in incorporating Enterprise Development, Environmental Sustainability, Healthy and Well-being and Social Harmony in the model village will allow to provide better livelihood, empower women, provide quality education and skill development along with many other programs that supports capitalizing of the Sustainable Development Goals (SDGs) and meeting our national aspiration. This model village lives up to the principle of Chaudhary Foundation with social reformation and independency.

In the area of Education, Foundation is providing scholarships to hundreds of students throughout Nepal. The foundation also

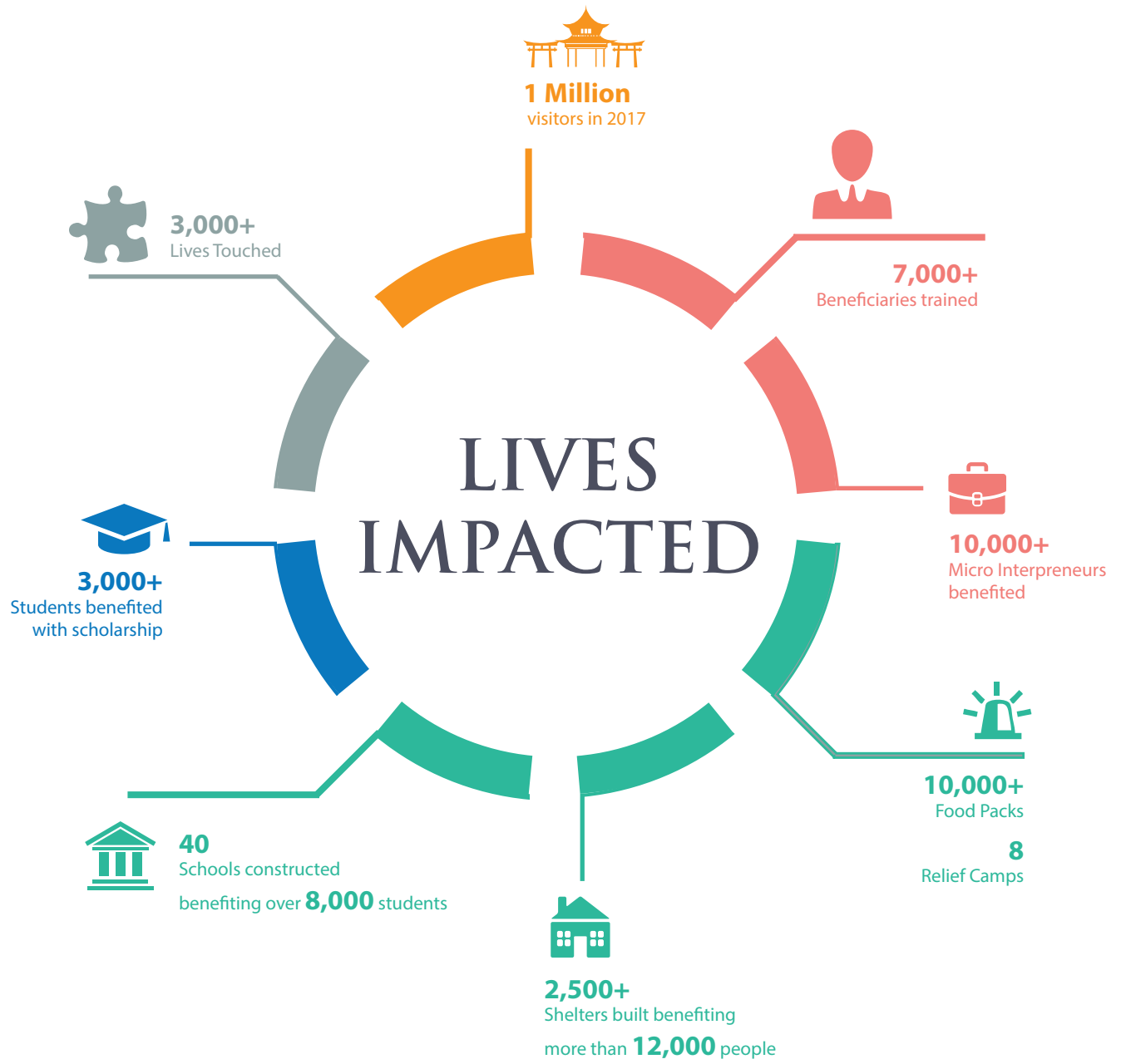
built and handed over more than 40 earthquake- damaged community schools in remote areas of Nepal, serving more than 6000 students across all those districts. Not only schools were built, but also these schools were provided with digital classroom allowing them to explore what the world has to offer. The foundation believes that to have smart children and students, their mother needs to be smarter.

Through foundation’s Unnati project (a Livelihood & Skill Development project), micro entrepreneurs especially women led enterprises have been empowered to be connected with market and enhancing their livelihoods. This has not just helped in the progress of enterprise development but also helped empowering women and support for better growth of children in villages. Creating a market for micro entrepreneurs at CG Digital stores and supporting hundreds of micro-entrepreneurs by creating market at our various CG habitats has been an exemplary outcome of the support the foundation received from the parent company CG.

Moving forward the foundation is working on projects on safe and clean drinking water to address WASH challenges of the country in rural communities with focus on community schools. The project aims to provide them with water treatment plants that will prevent hundreds of students and the surrounding communities from water borne diseases. Projects on women health specially focusing on menstrual hygiene and maternal health are also part of the coming year’s activities. An ongoing current project is providing training to women on how to produce sanitary napkins pads and distribute and sell it among their community. This aims to directly help the women enhancing their livelihood through this entrepreneurship and help reducing women reproductive diseases.

The coming year is one with purpose and conviction. With projects being aligned to contribute to the SDGs the foundation is looking forward to working closely with United Nation wings such as UN Women, UNDP, UNFPA along with the Governments of Nepal, United Kingdom, United States and Japan. 2016 was the year of initiations, 2017 has been the year of progress, and 2018 will be the year of impact.









The Sustainable Development Goals (SDGs) is a list of seventeen globally recognized goals meant to foster universal action in order to end poverty, protect the planet and ensure that everyone enjoys peace and prosperity. These goals were inspired by the Millennium Development Goals (MDGs) which were specifically created to reduce poverty and which are deemed to be successful. The SDGs incorporates issues related to innovation, climate change, economic inequality, sustainable consumption, peace and justice, among other things. Every goal on the list is equally important and is interconnected. Also, these goals cover every aspect of humanity and are relevant to developed nations, developing and underdeveloped nations. The SDGs could be viewed as a roadmap for every nation, a sort of an action plan in order to ensure prosperity for its future generations as well as for the entire planet.

The Sustainable Development Goals are holistic - it ensures basic human rights to citizens, as well as extends peace and security. These goals could be references for not just UN member nations and its governments but for private sectors, development partners, civil societies and common citizens. By referring to the SDGs on a regular basis, various groups and organizations can aspire to achieve economic development as well as environmental protection.

CG Corp Global is a multinational global business conglomerate of Nepal. Chaudhary Group has more than 76 world-class brands with products and services ranging from FMCG, hotel and resorts, consumer electronics, reality, hydro energy, banking, education and construction with more than 10,000 strong work-force. Keeping its scope and impact in mind, CG Corp Global has incorporated the SDGs into its structure and business verticals. The state of equilibrium in politics, economy and society is possible only when the private and public sector have a balanced relationship and an effective investment for the common good. Instead of being self-

centric, business groups such as CG Corp Global can measure its impact in terms of its impact on a majority of the people.

Chaudhary Group is fully committed to the principles laid by the SDG and has started implementing them into its business systems. CG embraces this new global paradigm shift, with the intention of ushering positive transformations and improving the livelihood of millions of people. CG has also started orienting its employees towards the SDG and its impacts. CG has been leveraging its strength; its management team members are well aware of these 17 goals and 169 indicators. These goals and indicators directly impact CG's core business plans as well as individual members within the organization.

"I am counting on the private sector to drive success. Now is the time to mobilize the global business community as never before. The case is clear. Realizing the SDG will improve the environment for doing business and building markets. Trillions of dollars in public and private funds are to redirect towards the SDG creating huge opportunity for responsible companies to deliver solution," said Mr. Ban Ki Moon, the former UN General Secretary.

Chaudhary Foundation, a Corporate Social Responsibility wing of Chaudhary Group, and the United Nations Development Programme in Nepal have signed a new partnership agreement for the promotion of SDG. Both of these organizations are taking collaborative steps to increase awareness regarding the SDGs, with a focus on the role of the private sector and mobilization of stakeholders for the achievement of the various goals. The partnership will optimize Chaudhary Group's contribution and involvement in achieving SDGs, capturing opportunities in full to cater to its business needs and to pursue social and environmental sustainability. Thus, Chaudhary Group is committed towards SDG and its various indicators.



# ENTERPRISE DEVELOPMENT



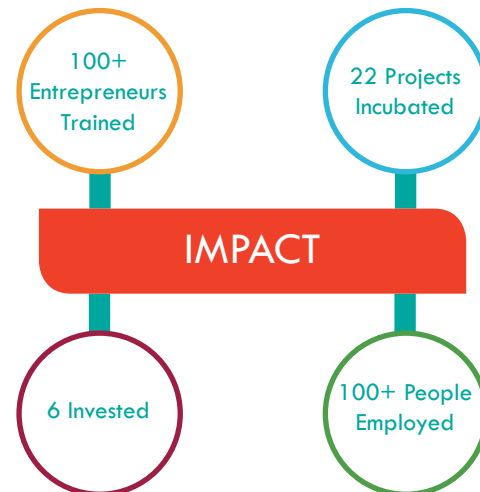
Enterprise Development of various kind across 7 districts of Far Western and Western Region of the country are targeted to address pertaining social issues through social business. This also ultimately helps to reduce the poverty level of the area. Employment created by Social business are one of the most important aspect of Sustainable Development Goals. Economic status of people in region such as Dolpa, Jumla, Kailali will be enhanced through social business innovation supporting SDG 1 national target of reducing poverty to below 6% by 2030. Similarly, nutrition project such as in Jumla where nutritional status of children below the national standard, where we are producing fortified cookies is complementing the national goal of reducing undernourishment of 0-59 m by 1% by 2030 . Production of nutritious food grains and their market promotion helps not only in reducing hunger but providing access to nutritious grain across the country. In all of these enterprises development work ethics, work values and aspiration for economic growth has been incorporated in the incubation training and in daily running of the business supporting SDG 8. All the social business implements social impact matrix especially developed for social business, which supports the business to run in more socially impactful way like ethical business practices, healthy work place etc. Hence, Enterprises development in particular is one of the key element to support SDG's and its indicators.

# ENTERPRISE DEVELOPMENT

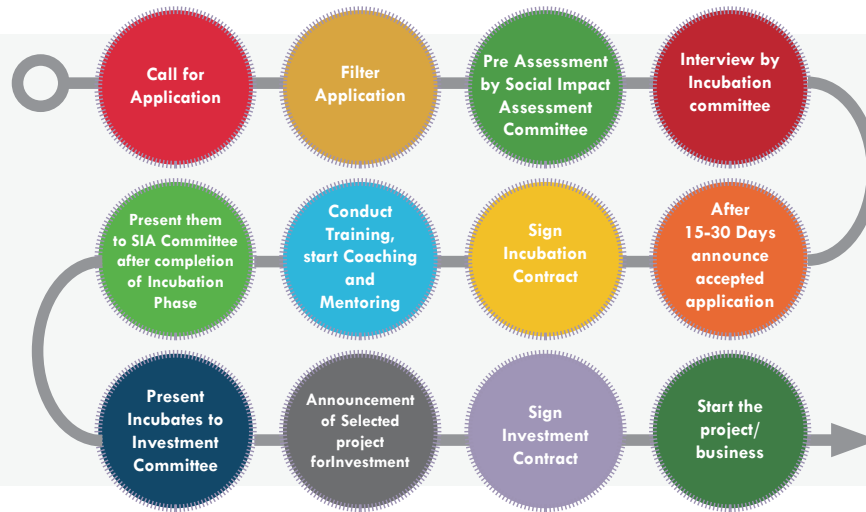
Nepal Social Business (NSB), a joint initiative of Lions Club International Foundation (LCIF) and Chaudhary Group (CG) started in July, 2014. The partnership was to address various social issues faced by the country through social business. Here Social Business was planned to develop through awareness, incubation and investment in the businesses.

More than 100 entrepreneurs have been trained out of which 22 projects have been incubated. Out of those 22 projects, 11 projects were recommended by Social Impact Assessment Committee and Investment Committee. Finally out of 11 recommended projects 6 projects have been invested into. Out of those 6 projects, 4 projects are in Mid-Western Development Region and 2 projects are in Far Western Development Region of Nepal.

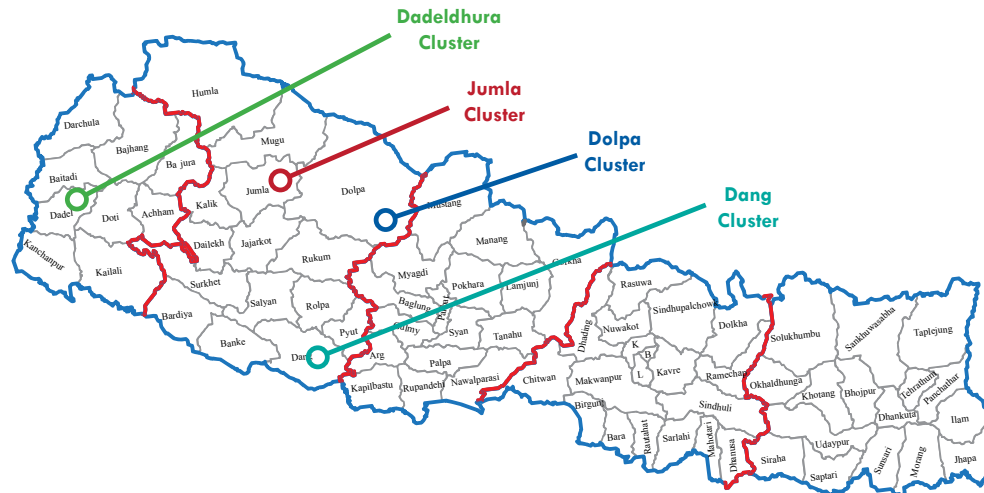
Recently in 2016, 6 new projects have been incubated in Dolpo district as Dolpo Eco Lodge Project and 7 are in process of being invested.



## ACTIVITIES OF NSB



## NSB REACH



There are so far 3 batches of incubation that have been organized since June 2014. First batch was Pilot Project at Jumla started in July 2014 and second batch started on June 2015 with Dadeldhura and Dang Cluster. Third Batch incubation started in December 2016 at Dolpo.

## BATCH I: JUMLA CLUSTER

### KARNALI MITERI UDHYOG PVT. LTD.

Karnali Miteri Udhog located in Kudari VDC of Jumla, focuses in producing food containing 'right' micronutrients and identifying a distribution channel, reaching to the 'right' families and educating them about the 'right' food habit. They are producing ready to eat food for children and pregnant women like cookies, super flour and nutrition bar at reasonable and affordable price at local level to solve malnutrition. Malnutrition among children is caused by 3 main factors: lack of time to prepare nutritious food for the children, lack of (or habit of not eating) food with the right nutrition and the lack of hygiene (leading to diarrhea). This project is focused to solve these problems. CG Foods R&D team are involved in mentoring this project. Currently, the entrepreneurs are producing muffins, millet biscuits and litopitho (fortified flour) and selling at local market and schools.

**3 main factors of malnutrition :  
TIME, NUTRITION & HYGIENE**



### ORGANIC PHALPHUL TATHA KHADYA UDHYOG PVT. LTD.

Organic Phalphul Tatha Khadya Udhog Pvt. Ltd. is located in Chandannath Municipality of Jumla. This project is focused more on producing organic dried apple slices, black beans, lentils and other organic products. It aims to remove the use of pesticides in agriculture in Jumla, and provide healthy fruits and vegetables to the community as well as promote local products to external market.



## BATCH I: DANG CLUSTER

### BAGESHWORI MULTIPURPOSE FARM

Based in Kotmaula VDC, Salyan district, this multipurpose farm produces nursery plants of oranges, lemon, pomegranate, lime and ginger. This particular VDC is well recognized for producing oranges and ginger, however the entrepreneur has started planting lemon, pomegranate and lime plant with support from NSB to meet the growing demand for citrus fruits. The entrepreneur aims to encourage local youth and community overall to start such multipurpose farm and stop the youth from migrating for work abroad.



### DANG HOSIERY AND GARMENT

Dang Hosiery and Garment is located in Tulsipur Municipality, Dang which is in the Mid-West part of Nepal. Its objective is to create employment to women – especially dalits, madhesi, single women and women from backward community and up-lift their livelihood, and to provide school dresses to school children at affordable cost. The project as per its objective has employed women garment tailors (60% of total staff are women) and has been delivering school uniforms at various schools in Dang district.



**60%**  
Women  
Staff

## BATCH II: DADELDHURA CLUSTER

### MAHALAXMIJ ECO FRIENDLY BAG FACTORY

The entrepreneur with the support from NSB is producing eco-friendly bags as well as backpacks. With Tikapur municipality in process of being 'plastic free city', this project aims to replace plastic bags with eco-friendly bags. It produces eco-friendly bags to support such campaigns. So far local grocery vendors, clinics and other stationery shops have been purchasing both eco-friendly while the backpacks have been popular with school going kids.



### AJAYMERU COPPERWARE

This project from Amargadhi municipality, Dadeldhura produces agriculture tools, brass and copper utensils, idols of gods and goddess, traditional musical instruments and other items as per order. This project aims to maintain the traditional and indigenous skill of Tamrakar community on handling and producing on copperware.



## BATCH III: DOLPO

### DOLPO ECO LODGE

NSB is promoting lower Dolpo trail by engaging local entrepreneurs into the model of social business through hotel business. The aim of this project is to promote Dolpa and its trekking route to Lake Phoksundo into world class trekking trail enhancing existing lodges by providing comfortable and professional service to the trekkers. The main objective of this project is to increase tourism in the region of Dolpa and increase livelihood of the community there. CG Hospitality team are providing their technical supervision and training for this project, especially to upgrade these lodges to eco-lodges.



## “ STORIES

**Changing times, changing lives: A story of a woman who defied odds and made an impact**

I am **Sarita Gupta**, and this is My Story

Born and raised in India, I never thought I would, one day, be where I am today. As soon as I was in my teens I got married and made Nepal my home. My life was governed by many social norms set forth by my mother-in-law. One of the norms was as the same in India; the daughter-in-law of the house was not allowed to go out of the home. It was only after her death, 10 years after our marriage, when I finally was allowed to go out. My husband and I ran a small provision shop. I knew the basics of tailoring; cutting cloth and sewing and as I sat there day in day out, I kept thinking to myself “I know tailoring, but where and how could I do it?” I had no place to go. I further started to think, how many other women like me might be in the same position, I couldn't go to sleep at nights with these thoughts. I was engulfed with these thoughts every day. I was even blaming myself for not being able to do anything about it as well. Many INGOs, NGOs and even government programs came along in the plight to uplift women's economic status. Women were trained in various skills but that was the end. There were no provisions for employment or entrepreneurship. I was not at peace with myself. My husband had been a very active member of the civil society for the past 25 years and as I looked around at all the memberships and affiliations he had with so many organizations, I thought I should tell him how I felt. One day I told him. Without a second thought and with heaps of excitement, he started giving me ideas and showed his support to whatever I decide to do.

He was the one who told me about Nepal Social Business, and it made me even more determined to move ahead. We both put our heads together and drafted a proposal and submitted it to Nepal Social Business, an initiative taken by the Chaudhary Group to uplift small-scale entrepreneurs like me to achieve great things. After a couple of weeks, I got to know that my proposal had been selected and I went in for the incubation



training conducted by NSB, which helped me focused on a goal and follow it.

Today, my company- Dang Hosiery & Garment Pvt. Ltd. is up and running, thanks to the enormous moral support from my husband and the knowledge and financial support from NSB. I am determined to provide employment to all the women who have had faced similar hardships and challenges in their lives. I have opened my doors to women from all walks of life to get empowered through the company, from conflict affected women to dalit/janajati women in the area. I plan to employ 11 women in the first year and plan to produce 4,000 – 6,000 school uniforms for children. Subsequently, I will grow my business on providing employment to women who will produce school uniforms to children. In this manner I am able to show how one person can make a difference. Dang Hosiery & Garment has created a paradigm shift of social and cultural norms and beliefs. Women are encouraged to work by their husbands and families; religion and caste lines have been blurred.

I would like to thank Chaudhary Foundation for believing in me. I am fully determined to take this business to all 5 districts in this zone.

*As told by Sarita Gupta (October 2016)*

“ .... I kept thinking to myself “I know tailoring, but where and how could I do it?” ... ”



**Reshma Shrestha** is 29 years old from Jumla, Karnali one of the most remote part of Nepal. Currently she is working as a local coordinator of Nepal Social Business, the wing of Enterprises Development program of Chaudhary Foundation. She has been working with NSB for almost two years now. Reshma has been a key person to promote Social Business values in Jumla among entrepreneurs. She plays a crucial role in handholding entrepreneurs in each part of their business. Recently, she has been key marketing person as well to sell the nutritious cookies and bakery product that enterprise produces.

Reshma is originally from Jumla. Due to remoteness and inaccessibility to her interest of education she had to go outside of Jumla for her higher studies. She went to China to complete her OJT classes as well. She was hardworking and she was dedicated towards learning a new skill and putting that into the national development. When she heard about the Nepal Social Business job in Jumla she did not have a second thought

because she was looking for an opportunity to do something in her own place. She believed that unless and until locals after finishing their schools and learning skills do not come back to their own place, community development in rural Nepal is very difficult. Reshma was challenged by her father telling her there was no way she would last more than a month in Jumla after living abroad and in Kathmandu. But today, her father is really proud of his daughter who went back to Jumla and remained in Jumla for the community development program through Social business ideas and becoming an example and inspiration to many others to engage in their own community.

Reshma is a role model to many more young people around the nation that if you want development and if you want to make difference in your society you have to engage yourself in community development and transfer the skills. Finding an opportunity and creating decentralization is in our own hand. She has become a dedicated citizen of the country and devoted pioneer to bring positive changes in Jumla.



# EDUCATION



Education is one of the most important area that Chaudhary Foundation has been supporting since its inception. Completion of 40 schools and the support towards Quality school program strengthening the skill of teachers in rural Nepal is an example how Foundation is supporting SDG 4 of ensuring inclusive and equitable quality education and promote lifelong learning opportunities for all. Continue scholarships program are opening up doors of an opportunities and inspiring students from rural areas towards better education especially towards those who are in need, indigenous and female students. Equipping classrooms with modern technology and providing an opportunity to vulnerable schools supports indicators of SDG 4. Various skill development program where we prioritize female participation is our support towards SDG 5 of gender equality and empower all women & girls.

# EDUCATION



*Our Education programme is taking a qualitative approach to enhance public education through the Quality School Program (QSP) and GyanUdaya Scholarship.*

## QUALITY SCHOOL PROGRAM

Quality school program is an initiative which is focused on the enhancement of information and technology (IT) learning by upgrading existing IT facilities and services of educational institutions. It provides capacity development workshops and necessary resources as per the need of the institutions. QSP envisions a digitally integrated classroom for all students to encourage innovation, promote IT skills and contribute to holistic education and all round development of its students and the country.

## GYANUDAYA SCHOLARSHIP

GyanUdaya scholarship was established in 2010 to give recognition to deserving but underprivileged students to help them continue their studies. The scholarship is provided on annual basis and The total no. of students that benefited from this cause were 465. Community school teachers contributing to help students excel are also honored as part of the scholarship. GyanUdaya Scholarships encourages students to be committed and highly successful in their education.

## DIGITAL CLASS ROOM

Chaudhary Group and LG are business partners. This partnership in business has led both of this organization to become a partner in philanthropy as well. After the devastating earthquake of 2015, both of these organization emerged to reach out to ease the pain of those earthquake victims. LG and CF continue to pursue community development project. Currently LG is supporting to set up digital class room. In Nepal digital technology education (classroom) is a dream project and still out of reach to many schools. The literacy rate of Nepal as per 2011 census report is 65.9%, while much efforts are being made on attaining higher literacy rate the idea of digital literacy is still long way to be achieved. However, most schools in urban and semi-urban area of Nepal do have provision for computer education and are somewhat contributing towards achieving digital education. The idea of such digital skills to rural Nepal can not only help in attaining digital literacy but also to connect those families whose family member has gone abroad for labor or some other purpose through social networking connections and other existing technology.

Through digital knowledge/education, schools will be able to create and implement a systematic and professional development program which will positively affect learnings of students and help increase their achievements.



Desktop Computers



Laptops for Computer Teachers



Laptops for Student



Projector



TV- 32" LED



Wireless Internet

“ **3 schools in Nawalparasi & Sindhupalchowk in the first phase** ”

Three Schools are being supported as a pilot project for this program. Shree Mahakali Higher Secondary School in Giranchaur, Melamchi is one of the schools where digital class rooms will be launched. There are altogether 263 students in this school. Most students belong to Tamang community in Giranchaur whose houses are destroyed by earthquake where Chaudhary Foundation is also building houses to those victims. Digital Class room project are part of holistic support Chaudhary Foundation is bringing to upgrade and enhance this community. Thus, partnership with LG and its support towards Nepali community is highly commendable. Chaudhary Foundation and LG has also upcoming projects in pipeline for coming days.

# HEALTH & SANITATION



One of our prominent commitment towards Family Planning 2020 makes us more accountable towards ensuring healthy lives and promote wellbeing. Mass communication support for family planning and support on distribution of health commodities in Nepal will meant a lot to support SDG 3 and its indicators. Sexual adolescent health, education, awareness for all sex are well equipped within our reach to support SDG 3. Clean water and Sanitation is one of the key area where Foundation support's keenly. Water filtration system in various schools and hygiene promotion is one of the way to support SDG 6. Celebration of Global Toilet day, water day, hand washing day and integrating our campaign with national goals and global goals are how we are striving to support Goal no 6.

# HEALTH AND SANITATION

*This program of CF focuses on improving the health of the people of rural areas through the WASH and Women's Health initiatives. It conducts various WASH related activities to upgrade healthy living standards of people in various parts of the country. The program supports activities such as health promotion, safe drinking water and capacity building. These include distribution of information, education and communication (IEC) materials, community awareness, providing clean and safe drinking water to schools and operations and maintenance of WASH facilities. Likewise, through the Women's Health initiative, CF, coordinating with women's groups across various parts of the country, organizes health camps and provides training to produce low cost sanitary napkins.*



*Awareness on personal hygiene, Champi Devi Higher Secondary School in Champi Lalitpur.*

## CLEAN WATER, HEALTHY HABIT

Chaudhary Foundation, the social wing of the Chaudhary Group, and Planet Water Foundation, a US-based NGO working in various parts of the world providing access to clean, safe water to nearly one million children, have teamed up to provide sustainable community-based water filtration systems to schools across Nepal. The project is targeting schools that Chaudhary Foundation has built post earthquake as part of

## सफा पानी, स्वच्छ बानी

its CG Shikshyalaya program. The MoU has been signed on November 14th 2016 at the office of Chaudhary Foundation by Mr. Mark Steele, the Founder and CEO of Planet Water Foundation, and Mr. Nirvana Chaudhary, CEO of the Chaudhary Foundation.

The project will also focus on Water-Health and Hygiene education of school children and the community. "Our vision is to create sustainable, community development through the various projects that Chaudhary Foundation has initiated. School children and schools are the primary focal areas of development. We believe that the project will provide relief to thousands of children of various waterborne diseases by ensuring safe drinking water and improved hygiene practices," said Mr. Nirvana Chaudhary. Ten school project sites have already been selected in Dolakha, Kavre, Lalitpur, Bhaktapur and Sindupalchowk. Each project is budgeted tentatively around US\$ 10,000. The objective of the program is to enhance rural community development by deploying community-based water filtration systems and implementing hygiene education programs in 100 different schools in Nepal before 2020. Mark Steele, the founder of PWF further added that "We are very excited to be partnering with the Chaudhary Foundation which will be our implementing partner. Our experiences and expertise collaborated with the foundation will help thousands of children across Nepal."

## WOMEN'S HEALTH

At the international Family Planning Summit held in London on 11th July 2017, Chaudhary Group (CG) committed to boost the Nepal Government's efforts on family planning. The Family Planning Summit takes place on the five-year anniversary of the inaugural London Summit on Family Planning when world leaders set a goal to empower 120 million additional women and girls in the 69 lowest income countries to use modern contraception by 2020, and a new partnership called Family Planning 2020 (FP2020) was launched.

The Family Planning Summit is co-hosted by the UK Government, UNFPA, the United Nations Population Fund and the Bill & Melinda Gates Foundation, in close partnership with the Family Planning 2020 Secretariat (FP2020) and was attended by Ministers of Finance, Ministers of Health, and representatives of international organizations, private sectors, civil society and youth advocates from over forty countries.

CG is one of the organizations to have made commitments that expand access to contraceptives, improve supply chains, or market and deliver family planning services to their employees. These will include commitments to reach more women and girls, including through their networks, assets, and expertise—from supply chains to microfinance networks to media channels.

Today, there are approximately 214 million women in developing countries who want to time, space or prevent a pregnancy but are not using modern contraception. Fulfilling their unmet need for contraception would save lives, reducing maternal deaths by one third. It would avert 67 million unintended pregnancies around the world, which in turn would prevent the deaths of some 100,000 women from related complications.

CG is committed to supporting the right to Reproductive Health as enshrined in the Constitution and to the Government's efforts to provide universal access to sexual and reproductive health which is a cornerstone of the Sustainable Development Goals. The contraceptive prevalence rate for modern contraception among currently married women has increased from 35 percent in 2001 to 43 percent in 2016 (NDHS). However, it has remained stagnant for several years and modern contraceptives are often not accessible to a significant number of women and adolescent girls from remote parts of the country.

The commitments expressed by CG in facilitation of its social arm Chaudhary Foundation is expected to be a milestone in the promotion of a stronger partnership between the private and public sectors in the country and to pave the way for future stronger collaboration in the health sector in Nepal.

### FAMILY PLANNING 2020 COMMITMENT

#### COMMITMENT 1

Chaudhary Foundation commits to help the Government of Nepal to strengthen Family Planning uptake in Nepal through generating demand for services through support to the use of mass communication tools, building on the work of Government of Nepal/USAID's HC3 programme.

#### COMMITMENT 2

Chaudhary Foundation commits to support the Government of Nepal and work with health sector development partners to strengthen supply chain management of FP and other health commodities, with a focus on the sub national level. Areas of engagement are yet determined but will focus on the Foundation's comparative advantage and where gaps lie. Initial focus will be on one province.

#### COMMITMENT 3

Chaudhary Foundation commits to supporting approaches to expand the use of an adolescent sexual and reproductive health mobile phone app (Khulduli), in particular among youth and in remote areas, developed by the Government of Nepal in collaboration with development partners.

# POST DISASTER RESPONSE & MANAGEMENT



Building back better is one the key principle we have been incorporating for an establishment of resilient communities. Disaster Risk Reduction and the preparedness is one of the key element of Chaudhary Foundation supporting SDG 11. Vision of model village with earthquake resistant homes, environmental sustainability, economic prosperity and harmonious society is one key step towards achieving SDG 11.



# POST DISASTER RESPONSE AND MANAGEMENT

Chaudhary Foundation has a Post Disaster Response and Management programme to look after emergency relief operations and the management of victims in an event of a natural disaster. The programme quickly mobilized rescue, relief and recovery efforts immediately after the devastating earthquake of April 2015. Through the programme, CF has built more than 3,000 transitional shelters and 40 semi-permanent schools in 10 out of 14 highly affected districts. After the earthquake, the post-disaster response and management was divided into three phases. Phase one concluded with the distribution of emergency relief items of food, water and medical supplies to the affected people while also helped remove rubble in different areas of Lalitpur district. In phase two, necessary relief aid such as tents, bottled water, noodles, juice were distributed using CG Foods distribution and logistics network. Meanwhile, the ongoing phase three of the programme is focused on reconstruction and rehabilitation. The phase has been divided into three projects namely, CG Ashraya, CG Shikshyalaya and CG Sipsikchya to build transitional shelters and schools in the quake hit districts and provide demand driven skill-based vocational training to the youths of the affected areas. Chaudhary Group has made a commitment of USD 2.5 million through the Foundation to restore schools and homes.

## CG ASHRAYA

CG Ashraya is a transitional shelter program of Chaudhary Foundation. The transitional shelters were built with an objective to provide quick and safer option for shelter for those who were left homeless during the 2015 earthquake. The project was implemented with full involvement of the beneficiaries who were trained on construction technique and skills guided by our field engineers, social mobilizers and local coordinators.

Lekmaya Dhakal, 58, who is a single woman resident of Baseri VDC 6 in Dhading district, is one of the beneficiaries of "CG Ashraya" home constructed by Chaudhary Foundation. Baseri is 60 km away from Dhadingbesi. It is one of the most remote VDC of Dhading. The village was badly destroyed by the earthquake of April 25th, 2015. Almost 90% of houses in this village were destroyed by the earthquake. Chaudhary Foundation has built 266 houses in this VDC.

Despite its remoteness, the smiling glimpses of Manaslu enhance the beauty of this village. Additionally upon our visit we found out that youth in this villages are entrepreneurial. They have started a homestay tourism business via Baseri to Manaslu.

Lekmaya lost her home on April 25th 2015 after the devastating 7.8 magnitude earthquake struck the country. She was terrified and was not sure how she was going to build a new home. "I was all by myself, I lost my husband long time ago and both of my sons are not here living with me, I lost control of my life

after my house was destroyed by the earthquake." In response to the disaster, Chaudhary Foundation quickly sprang into action and so far has built 2520 shelters across 10 earthquake-affected districts. The Foundation reached out to groups of single women, elderly citizens and marginalized communities to provide support through CG Ashraya. "Chaudhary Foundation has given me my life back, they helped me re-ignite the light which was almost diminishing" says Lekmaya. Members from Social Welfare Council and Chaudhary Foundation along with local authorities visited many of these houses during the monitoring and evaluations of the construction project. Additionally Chaudhary Foundation also supported these village with drinking water pipelines which benefits more than 70 HH along with Higher Secondary school of the region. Mr. Gopal Dhakal, the local said "Drinking water had become a big headache to us. Villagers, especially women had to walk almost 25 minutes to fetch a bucket of water. Now the support of Chaudhary Foundation has made lives easy for these 70 HH. I am especially thankful to Chaudhary Foundation team because students in schools have access to drinking water easily in their school premise itself. "

**123** one-room, **23** two-room,  
**5** three-room homes constructed



'Nature did a sin however unknown people came and supported us'- **Pema Lama Tamang** of Yarsa, Rasuwa expressed her happiness in one sentence. Her short and sweet sentence proves- having a new house, she has been really happy. Lutheran World Federation, Disaster Emergency Relief, Islamic Relief Worldwide, Batas Foundation and Chaudhary Foundation jointly supported to build permanent house to 151 families of Yarsa; among them one of the house is belong to Pema. Since, she lives alone in Yarsa, a one-room house itself is sufficient for her. These organizations supported to build three types of house as selected by beneficiaries themselves: one-room, two-room and three-room house.



Local resident **Parbati B.K.** is also not less happy than Pema. 'Looking auspicious time, we have already started to live in the new house'- B.K. said. She had been staying in a hut covered by Corrugated Galvanized Iron sheet since her house was destroyed by earthquake. 'We had to seek for the caves even in the small winds so that we could be safe'-B.K. explained how unsafe her previous hut was where she spent almost two years her life.'Water entered inside the house and everything used to be wet many times'-recalling the days after earthquake she lamented. Two-room house has been built for her family.



**Kanchhimaya Ghale**, like B.K. and Tamang also struggled with the difficult days after the earthquake. Words are insufficient to explain how fearful her pregnancy and post pregnancy period was. 'Earthquake destroyed the house; let's not talk about having food in time, even I could not drink water properly'-Ghale told. After few days of earthquake, her family sent her to Kathmandu to stay with relative for her safe delivery but after few months she returned back to village with her two-month daughter and again started to live under the tent.'The life under the tent with the neo natal baby was really difficult'-Ghale said. Since she has a joint family, a three-room house has been built for her family.



## CG SHIKSHYALAYA

CG Shikshyalaya is an initiative of Chaudhary Foundation aiming to construct public/community schools in the most affected areas. The buildings are rebuilt and improvised as per model depending on geographical accessibility for material transportation.

### OBJECTIVES

- To ensure start up / functioning of schools in the shortest possible time frame.
- To provide learning materials, vocational classes and technical training for students where required.



## MODEL VILLAGE : SHASHWATGRAM

Chaudhary Foundation has built around 3000 semi-permanent houses and 40 schools across all earthquake affected districts under its DRR program. The Foundation now envisions a Model Village with the objective to enhance sustainable development and resiliency of marginalized communities focusing on four major components namely:

Economic prosperity focuses on social business, enterprise development, skills and capacity development encouraging



innovation and self-sustenance. Quality of Life and Quality Education focuses on holistic way of learning and living by encouraging moral values, meditation and yoga, enhancing basic facilities comprising of water, sanitation and health as well as improving digitally integrated classrooms to encourage innovation skills and technology. Women health, clean drinking water, organic farming, renewable energy are major areas in environment and health section.

The Foundation has selected a village in Giranchaur in Melamchi Municipality in Sindupalchowkdistrictto construct a model village named Shaswat Gram. We will be building 70 permanent homes including various other Livelihood program, entrepreneurial development program, education support by providing digital classroom, women empowerment program and WASH program.

LWF Nepal has extended hand with Chaudhary Foundation to support its WASH program in its model village project. LWF will be constructing toilet and will support in distribution of drinking water tap system across model village. Chaudhary Foundation and LWF has similarly partnered a project together to construct 151 permanent homes in Yarsa of Rasuwa district post-earthquake. Dr. Prabin Manandhar, the director of LWF and Mr. Nirvanana Chaudhary from CF signed a MoU at a function at CG office on August 22nd of 2017. The project in Giranchaur is being carried out upon the recommendation of Nepal Reconstruction Authority. Chaudhary Foundation is working with NRA, Melamchi Municipality, local authorities and various local leaders to complete this project. The proto type house and community center will be constructed as the first phase of the project followed by construction of other 70 HH.



Model Village Master Plan

## EMERGENCY RELIEF FOR FLOOD AFFECTED

Monsoon brought heavy rainfall across Nepal in July and August in 2017 bringing with it numerous landslides across hilly districts. The disaster crippled lives of many people making them homeless and destroying all their food crops, which they had saved up for rest of the year.

The most hardly hit area was the Southern Part of Nepal where it took lives of hundreds and thousands became homeless. Chaudhary Foundation immediately formed a Disaster Response Team within 12 hours of these floodings. The Disaster Response team had a Steering Committee with the Group Chairman, MD and VPs being directly involved in this emergency response and relief effort. The steering committee instructed Business Unit Heads to immediately respond to the disaster and within 24 hours CG Food and CG Brewery team were on the field with immediate supplies like medicine, blankets and mattress, and food supplies packages. In each of the flood affected districts our network of distributors and our sales representatives were mobilized as part of the Disaster Response Team. Sales employees and Chaudhry Foundation team in coordination with local authorities distributed thousands of "Food Packs" that

contained all in-house FMCG products of Chaudhary Group (Wai Wai instant noodles, Rio Juice, Rio Water) and blankets in many districts. It was one of the most effective ways to provide relief materials to victims within a short period of time. The Disaster Response Team reached Nawalparasi, Sunsari, Chitwan, Saptari and Bardiya districts.

The entire group was committed to help people in need; from the production floor employee to our Chairman. Production units were working extra time to prepare the Food Pack for the people in need. All together we supplied food supplies and blankets to 2,500 households affecting 10,000 lives directly.

All this was possible only due to our experience of disaster response during the earthquake that struck Nepal in 2015. This experience allowed us to effectively and efficiently manage our internal resources and mobilize our huge distribution network all across the country. Although this disaster was of a different kind, the modality of our earthquake disaster response was very much applicable.



# LIVELIHOOD & SKILL DEVELOPMENT



Incubation, training and its implementation is one of the key support Chaudhary Foundation have been providing through its livelihood and skill development program. SDG 4 is a substantial element of livelihood and skill development program. Through Chaudhary Foundation's training hundreds of youth if rural Nepal are skillful and have been engaged in reconstruction work enhancing economic growth. Skill development program are also helping youth with training such as carpentry, mobile repairing and masonry in finding job easily on city areas supporting SDG 8. Female micro entrepreneurs in rural Nepal are empowered with our project called Unnati which ensures the gender equality and female empowerment through livelihood opportunities supporting SDG 5.

# LIVELIHOOD & SKILL DEVELOPMENT

Chaudhary Foundation has introduced two programmes CG Shipshikshya and CG Unnati under the Livelihood and Skill Development programme. The Foundation has a training centre located at CG Industrial Park, Nawalparasi that provides various vocational trainings in professions including masonry, carpentry, and electrical works, among others. In order to support people rebuilding and reconstructing houses after last year's earthquake, CF has been organising a special project at earthquake affected districts.

Similarly, the Unnatiprogramme is promoting sustainable livelihoods through women empowerment. Unnati aims to support women from socially deprived communities by providing income generating opportunities. Joining hands with National Micro-Entrepreneurs Federation Nepal (NMEFEN), CF provides skills and capacity development training to the women through women micro-entrepreneurs. It is helping the women to become self-reliant by teaching them to make handmade paper, along with hemp and bamboo products, textiles, cashmere, felt and organic food items. It also supports them from fundraising to marketing.

## CG UNNATI

UNNATI is a initiative of Chaudhary Foundation which supports a future for women from socially deprived communities by providing them better income generating opportunities while safeguarding their health and building of their morale values and esteem.

### *Highlights of the ongoing projects of UNNATI*

#### **Unnati Shoppie at CG Digital Pvt Ltd. CG Shaswatdham Heritage Store**

The key innovation of the UNNATI program is to promote small scale micro enterprises and entrepreneurs. The products such as laptop bags, diary, shopping bags and others made of locally made materials will have an advantage of addressing business entrepreneurs through market linkages and business development. Giving the importance to preserve and promote Nepalese micro-enterprises, Chaudhary Foundation in joint

collaboration with CG Digital Pvt Ltd. and CG Shaswatdham has provided a platform for micro-enterprises to promote their products for income generation and to create livelihood opportunities.

The stations of CG Digital Pvt Ltd showroom and CG Shaswatdham Heritage store has been considered as a viable station to track and create market level awareness for the promotion of local products.

## Product Innovation

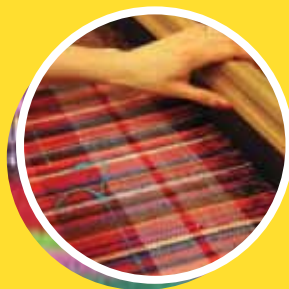
UNNATI is proud to present the list of products sourced from the Himalayan range rich in craft and traditional techniques that forms an integral part of the livelihood of its region, bio-diversity and cultural heritage.

The purity of material and painstaking processes makes them special, unique and beautiful. Every product tells a story of a region, indigenous materials and skills that have been safeguarded and handed down from centuries old practices.

## Product Development



*Handmade Paper*



*Textile*



*Felt and Cashmere*



*Hemp and Bamboo*



*Organic Products*



## CELEBRATION OF MSME DAY

The United Nations General Assembly adopted a resolution recognizing the crucial role Micro Small and Medium Enterprises play in achieving the 2030 agenda for Sustainable Development.

The resolution designated June 27th as MSME Day and the theme of the MSME day for this year is "Small Business Big Impact". MSME have the potential to make a long lasting positive impact on global development needs since they are the engine for economic growth and job creation accounting for two out of three net new job created worldwide.

In similar approach, UNNATI program of Chaudhary Foundation support micro-enterprises and entrepreneurs for market linkages and business development. To mark the special occasion of MSME day and Social Business day Chaudhary Foundation in collaboration with the UNDP exhibited different product to promote micro-entrepreneurs on June 27th, 2017 at Labim Mall atrium.



## LOW COST SANITARY NAPKINS AND SHOE MAKING TRAINING, GORKHA

14 days of Livelihood training program in SahidLakhan Thapa Rural Municipality, Ghairung in Gorkha district was completed on October 17th 2017. The training was specially focused for Women group in Ghairung to make reusable sanitary napkins, sandals and shoes. This training will enhance women entrepreneurship with objective to promote women's menstrual hygiene. The training was conducted for 60 women for 14 days dividing them in two shifts starting from 4th of October which was led by Ms. Swati Thapa, the deputy manager of Chaudhary Foundation. "This training has increased our confidence and we can make these products and sell it not just for money but to reduce the issue of menstrual hygiene. Our skills have been sharpened and this training has raised lots of awareness on our women groups regarding entrepreneurship, small micro enterprises and about women menstrual hygiene." Said Ms. Parbati Shrestha the chairperson of women group in Ghairung. The training was conducted by Chaudhary Foundation in collaboration with Seeds India and facilitated by Leading Women Association.





## CG SHIPSHIKSHYA

### KEY ACTIVITIES:

10 Mason trainings conducted in highly earthquake affected districts (Kathmandu, Lalitpur, Sindhupalchowk, Rasuwa and Dolakha) benefiting 300 masons enabling them to construct their own homes.

### OBJECTIVE:

Producing skilled manpower for better employment opportunities. Also help to enhance the skills of the youths going for foreign employment.

*In Pipeline:*

**Plumbing, electrical wiring, mobile repairing**



"The training not only taught me how to build earthquake resistant house but also gave me a stage to make my voice heard in the community."

**BimalaBika** (Participant)  
Baramchi, Sindhupalchowk



"We had been doing only 25% out of 100, remaining 75% we learned after this training."



# HERITAGE DEVELOPMENT & SPIRITUAL DEVELOPMENT



Chaudhary Foundation is working for inclusiveness and it is a Foundation to all. In our Heriatage Development and Spirituality program we promote oneness and humanness. Morality, disciplines, cultural heritage, conservation are some important element of this program supporting SDG 10 and 16.

# HERITAGE DEVELOPMENT & SPIRITUAL DEVELOPMENT

*Under the programme, CF aims to preserve cultural heritage and provide inner peace and tranquility to the people. It has CG ShashwatDham located at Nawalparasi for the purpose where Brahmin children are trained with the Gurukul-based ancient methodology to carry out various rituals and rites. Similarly, with the PashupatiAryaghatRevitalisation Project (PRP), CF is engaged in preserving one of the most sacred sites of the Hindus. Chaudhary Group's Chairman Binod Chaudhary has been personally engaged in maintaining the Pashupatinath Temple and adjacent areas.*

## SHASWATDHAM:

Chaudhary Foundation and Shashwat Dham family would like to thank every single one of you who have reached the temple at Shashwat Dham. In 7 month of time since March 7th the inaugural day more than 1 million visitors have already visited Shashwat Dham. The visitor includes head of states, spiritual leaders, political leaders, civil society, private organizations, students, spiritual seekers, religious devotees and commoners to get the darshan of Ekambareshwor Shiva temple.

“This temple is the midpoint of Sanatan Dharma and Spirituality. All age group of people has shown interest to come to this temple. Including Hindu philosophy, now we are including stories and subject related to Buddhism as well. This place will become one of the major attractions of religious site in Nepal.” Said Mr. Binod Chaudhary, the Chairman of the group.



The temple is along the east west highway which is 22 km far away from Narayanghat. The temple looks attractive and different which is why the number of people visiting the temple is increasing every day. In New year day of Baisakh 1 , thirty thousand people visited the temple in single day which is the record high till today. According to Mr. Narayan Shrestha, the CEO of Shashwat Dham there is no cost to visit the temple. There is a religious museum inside the temple and it cost Rs 100 to enter this museum. Students pay only Rs 25 to enter the museum. Children under 8 years do not have to pay any money even to visit the museum.

The number of people visiting temple are expected to be high in coming days and Chaudhary Foundation team and Shashwat Dham team heartily welcome you to come visit us to re-energize yourself and to understand values of Sanatan Dharma.

Shaswatdham aims to be a destination for all to attain spiritual strength, get exposed to the eternal knowledge passed over generations through saints and sages of Vedic times and experience the true nature of our inner being which is love and joy. Spread over verdant 12 acres, amidst scenic foothills of Nawalparasi Nepal, it is a destination for all nature lovers, spiritual seekers and explorers to explore the ancient knowledge and experience mental peace and inner joy in a tranquil yet vibrant environment.

## MISSION:

To be the most sought after destination for explorers, seekers and nature lovers globally for spiritual upliftment, mental tranquility and physical wellbeing, through Knowledge (Jnana), devotion (Bhakti), action (Karma) and Yogic Practices (raja) while preserving & upholding the essence of Sanatana dharma (the eternal way of Living) in its purest form.

## INAGURATION OF SHASWATDHAM:



Shaswatdham was officially inaugurated on 7th March, 2017 by Rt. Hon. President of Nepal, Bidya Devi Bhandari among various dignitaries of Nepal and abroad. Inaugurating the temple constructed by Chaudhary Foundation at Dumkauli, Devchuli Municipality, in Nawalparasi, President Bhandari said the site would become a milestone for socio-economic, aesthetic, tourism and religious development of the region. She also expressed confidence that the Dham will be a source of social harmony, kindness and peace across the globe. Shaswatdham Founding Trustee and Chaudhary Group Chairperson Binod K Chaudhary offered President Bhandari a peace bell at the function. The president also inaugurated Amalshwor Shiva Temple, Digital Religious Library and Religious Museum built on the Dham premises.

Also speaking on the occasion, Indian religious leader Sri Sri Ravi Shankar underscored the importance of Sanatana Dharma to spread the message of peace and harmony in Nepal.

RastriyaPrajantra Party Chairperson Kamal Thapa, Land Reform Minister Bikram Pandey, Sri Lankan Minister Daya Gamagae and Managing Director of Chaudhary Foundation Nirvana Chaudhary, among others, were also present at the programme.



## PASHUPATI ARYAGHAT REVITALIZATION PROJECT

### KEY ACTIVITIES:

#### HANDOVER OF PHASE 1 RENOVATION

On July 7th 2017, Mr. Binod K Chaudhary, the chairman of Chaudhary Group handed over the completion report of the Pashupatinath Arayaghat Renovation Phase 1 project to Mr. Govinda Tandon, the chairperson of Pashupatinath Development Trust. His Excellency, the ambassador of India Mr. Manjeev Singh Puri was the chief guest of the event. Mr. Puri also inaugurated the temple of Mangalagauri in the premise of Arayaghat. Chaudhary Foundation has renovated Anantanarayan Temple, Batsaleshwari temple, Batsaleshwaripati, Panch Ganesh, Mangalagauri, drinking water sprouts and various other structures around the area. Mr. Chaudhary took this vision to renovate arayaghat area when he was there to cremate his mother in 2001. The site is under world heritage site and Chaudhary Foundation patiently executed the job after various authorization and approvals from various Government and international stakeholders. "It is our moral obligation and our duty to preserve such historical monuments and we feel humble

to be handing over this report to Pashupati Development Trust and we thank everyone who helped us completing this vision" said Mr. Binod Chaudhary during the handover ceremony. The event was attended by various archeologist, religious leaders, civil societies and general public including Chaudhary family. The project was executed under the program of Chaudhary Foundation Spiritual and heritage Development. Foundation is keenly working to preserve and conserve such sites of importance and historical heritage.



*Mr. Binod Chaudhary, Chairman, CG Corp Global briefing His Excellency Mr. Manjeev Singh Puri, Ambassador of India about the project.*

# EVENTS & ACTIVITIES



# ACTIVITIES

## YOUTH EMPOWERMENT PROJECT

Skill based short term training like Mechanical Feeder, Electrician, Welder, Carpenter, boiler operator has been ongoing along skill test.

## HEALTH CAMP

An eye/dental/health camp has been going on every year to facilitate community.

## AGRO FORESTRY

A particular community is selected for cultivation of potato, where we provide seed capital to the community and they return back the seed amount with Potato.

## SPORTS PROGRAM

Sports items are being distributed in remote areas and we provide support and follow up for enhancement of sports activities to youth of Nawalparasi, Nepal.

## EMERGENCY RELIEF

We provided food/shelter/cloths to community that have suffered from natural disaster like flood/earthquake etc.

## FUTURE ATTEMPTS:

ShaswatdhamMahaveer Artificial Limb Centre at CMS Bharatpur, Nepal: We will be opening permanent Artificial Limb center at Bharatpur, Nepal in coming fiscal year, where yearly 300 people will be benefited at initial time with artificial limb free of cost. The no. of artificial limb will gradually be increased depending on the demand of the community.

## RURAL DEVELOPMENT (GRAHMIN JAGRAN):

The youth from the local communities in the villages who have undergone the Youth Leadership Training Program (YLTP). This gives them the skills, motivation and abilities to initiate and lead service projects in their own villages and localities based on their needs.

The 5H program aims at ensuring that every rural area/village has Homes for the homeless, Health care, Hygiene, Human Values and Harmony in diversity. The program aims to eradicate poverty, misery, disease and to ensure peace and harmony in rural and tribal areas worldwide.



## MODEL VILLAGE

- To Reach villages
- To Train rural youth in YLTP
- Conduct Stress-free relief camp
- Conduct hygiene camps
- Initiate on plantation of trees

## 1 MILLIONTH VISITOR AT SASHWAT DHAM

Sashwat Dham welcomed its 1 millionth visitor on 16 December 2017. The event was celebrated at Sashwat Dham premises by welcoming the millionth visitor along with 10 visitors. They were greeted by traditional Panche Baja and hymns recited by the students from the Gurukul at Sashwat Dham. All soecial guests were given a special tour of Sashwat Dham and its premises.

## VOCATIONAL TRAINING:

CTEVT Affiliated course: Mechanical Fitter, Boiler Operator, Welder, Carpenter, Electrician. We are in process of modifying the vocational training strategy with better approach so that the community at large can be benefited. The youth will be able to take advantage of skill they pose and that will eventually lead to self-employment or employment.

1 million  
visitors

in  
2017





## EVENTS

### UN GLOBAL CEO ROUNDTABLE MEET

In a high-level event organized by UN Women in the context of the 72nd session of the UN General Assembly, Melinda Gates, Co-Chair and Trustee of the Bill & Melinda Gates Foundation; Jack Ma, Executive Chair of the Alibaba Group; and Nirvana Chaudhary, Managing Director of the Chaudhary Group and Chair of the Foundation, joined Phumzile Mlambo-Ngcuka, United Nations Under-Secretary-General and Executive Director of UN Women for a strategic conversation on how collective action can scale-up opportunities for women and girls.

The dialogue among a select group of business and foundation leaders focused on the transformative role that companies and foundations can play to support the achievement of Sustainable Development Goals, including Goal 5 on gender equality. It highlighted new initiatives, such as the Unstereotype Alliance convened by UN Women with major advertisers and communications industry leaders to promote a more realistic and aspirational portrayal of women; the “Making Every Woman and Girl Count” initiative to generate, prioritize and use gender data for evidence-based and targeted policies; and the Global Innovation Coalition for Change aiming to make innovation work for women’s empowerment.

Participants at the event agreed that gender equality is a force to enable and accelerate achieving the Sustainable Development Goals (SDGs) and that empowering women is central to addressing the 21st century’s global challenges such as poverty, inequality, and violence. Yet, deep financing gaps for women and girls pose significant barriers and deter progress.

“We are very clear that the private and philanthropic sectors are essential partners for our work as we move forward with implementation of the 2030 Agenda for Sustainable Development. Their support is fundamental to UN Women endeavours, including building the Women’s Empowerment Principles, calling for and leading the investment in gender data analysis, eliminating gender stereotypes in advertising, and boosting ways in which innovation and technology can work better for women and girls,” said Phumzile Mlambo-Ngcuka, UN Women Executive Director. “This is everyone’s business, and I call on both current and potential partners to join this movement to drive the transformative changes needed,” she added.

Financial commitments made at the event will support UN Women’s efforts towards the achievement of the Sustainable

Development Goals by expanding women's economic opportunities, promoting innovation, developing effective gender data metrics, addressing regressive norms and stereotypes and improving safety for women and girls globally.

Chaudhary Foundation has 40 plus initiatives addressing the seventeen Sustainable Development Goals with focus on women and children at its centre-stage.



Global business and philanthropy leaders pledging support to deliver on gender equality at today's event included: Melinda Gates, Co-Chair and Trustee of the Bill & Melinda Gates Foundation; Jack Ma, Executive Chair of the Alibaba Group; Nirvana Chaudhary, Managing Director of the Chaudhary Group and Chair of the Foundation; Her Royal Highness Princess Lamia BintMajed Al Saud, Secretary-General of Alwaleed Philanthropies; Carolyn Tastad, Group President of Procter & Gamble North America; Wang Guangfa, Chairman of the Board and President of Beijing Fazheng Group; Andrea d'Avack, President of Chanel Foundation; Keith Weed, Unilever Chief Marketing and Communications Officer; Deepak Premnarayan, Executive Chairman and founder of ICS Group; José Caetano, People Management Director of Banco Do Brazil; Kofi Appenberg, Chair of the Ford Foundation Board of Trustees; Anka Wittenberg, SAP Diversity & Inclusion Officer; and Elfrun von Koeller, Partner and Managing Director at The Boston Consulting Group; among others.





## OTHER ACTIVITIES

### CHILDRENS DAY CELEBRATION - SEPTEMBER 14TH, 2017

Chaudhary Foundation celebrated Bal Divas (children's day) at Koseli School in Shantinagar Kathmandu. Koseli School supports children from slum area by providing them with free education. Chaudhary Foundation along with WaiWai team supported school bags for all children in the school. They also provided stationary and WaiWai instant noodles to support their daily food program. Mr. Surendra Khanal, the Senior Manager at CG said "We are really fortunate to be coming and helping these students. WaiWai always supports underprivileged and vulnerable students."



*A medical camp organized on Mugu district*



*WaiWai School Bag distribution*

# OUR PARTNERS



# CG CORP GLOBAL



#CG4SDG



## CGIP: A CASE OF INCORPORATING SUSTAINABLE DEVELOPMENT GOALS

Chaudhary Group Industrial Park (CGIP) is the largest industrial estate in Nepal. With an area spanning about 13 hectare, it is the first integrated industrial park in the country. CGIP has been constantly been working towards making it a self-sustainable unit since the last decade. 5 of its most prominent examples include the following:

### 1. Waste Water Treatment Plant

CGIP has installed wastewater treatment plant of capacity 950 cubic meter/hr. This plant ensures that all wastewater produced within the industrial park is treated before it is released from the premises.. The treated water is also further reused for gardening within the Industrial park. It has helped us to contribute towards SDG 6 (Ensure availability and sustainable management of water & sanitation for all) and also SDG 14 on Conservation of Water Ecosystem.

### 2. Captive Power Plant and Biogas Plant

CGIP has established a Captive Power Plant that uses husk, what is considered a waste. Using the husk that it procures from local sources as well other sources throughout the country, the plant is able to produce 2 Mega-Watt energy. This energy is what powers the entire Industrial Park. The power production

has been so efficient that it is capable of providing the locals with the energy requirements if the necessity arises. CGIP has set a new standard in power generation and consumption. Use of clean energy has made our Industrial Park free of heavy dependency on diesel and other fossil fuel.

Another complementary output of the wastewater treatment plant is the production of BioGas. This gas is further used within CGIP at various outlets for cooking and even at Sashwat Dham for its Eternal Flame monument. This biogas production has been able to address the need for:

Due to such activities on clean and sustainable energy generation, our industrial park is directly contributing towards SDG 7, SDG 9 and SDG 12 which is mostly about sustainable energy us and sustainable industrialization.

**13** hectare land

**950** cubic mtr/hr. water treated

**2** Mega-Watt energy capacity

**80%** local employment

### 3. Employment generation for the local communities

CGIP has been at the forefront in providing employment for the local community. Of the total 1800+ employees more than 70% are from the local communities in the area. The employment generated in the area has been able to provide the community economic up-liftment and overall development of the area. The workforce there also comprises a healthy mix of men and women ratio with 30% workforce consisting of women. With this generation of employment CGIP has been able to address the need for:

- a. Ending poverty in all its form everywhere (SDG 1)
- b. Promoting sustained, inclusive and sustainable economic growth, full and productive employment and decent work for all (SDG 8)
- c. Achieving gender equality and empowerment for all women and girls (SDG 5)

### 4. Environment Conservation through its in-house forest

A large portion of the industrial park has been conserved as a forest to maintain a balance in the environment. While the factories produce minimal emission the forest is actually able to stabilize the environment of not only the factory premises but

also the surrounding areas allowing the locals to enjoy a very healthy environment. Having been able to conserve the forest area has allowed addressing the need for:

- a. Sustainably managing forests (SDG 15)
- b. Taking urgent action to combat climate change and its impact (SDG 13)

### 5. Sashwat Dham

Sashwat Dham has been established as the center for spiritual awakening. The inauguration of the Dham was an example for people of all faiths and beliefs. Religious leaders from Hindu, Muslim, Buddhist, Christian faith among others were part of a larger interest to promote spirituality peace and harmony. A small initiation like this has created a sense of solidarity and oneness. Since the inauguration of Sashwat Dham is has been able to address the need for:

- a. Promoting peaceful and inclusive societies for sustainable development (SDG 16)

**CG**|HYDROPOWER

**CG**|CEMENT

**CG**|ELECTRONICS

**CG**|ENERGY

**CG**|BREWERY



**CG**|FINCO

**CG**|FOODS

**CG**|TEL

**CG**|BEVERAGE

**CG**|EPAY

**CG**|EDUCATION

**CG**|PACKAGING

**CG**|MOBILE

**CG**|DEVELOPERS

**CG**|DIGITAL

**CG**|RETAIL

**CG**|POLYTECHNIC



## NEPAL

Chaudhary House, Sanepa, Lalitpur  
P.O.Box: 1073, Kathmandu, Nepal  
Tel. :+977-1-5522330, 5529273

## INDIA

CG Foods India Pvt. Ltd.  
434, Udyog Vihar Phase - III,  
Gurgaon - 122001 (Haryana)  
Phone:+91 124 4670600

## INDIA (SILIGURI)

290/1 Lala Lajpath Roy Road,  
Anima Bhawan, 2nd Floor,  
Ashrampara,  
Siliguri-734001

## INDIA (GUWAHATI)

2B, 2nd Floor, Royal Circle,  
Near State Zoo,  
R.G. Bauah Road,  
Guwahati 781024, Assam

## SRI LANKA

2nd Floor, AEC Building  
140, Vauxhall Street  
Colombo 2, Sri Lanka

## UAE

Suite 3201, HDS Business  
Center Jumeirah Lakes Tower  
Dubai, UAE

## USA

333 West 32nd Street  
Suite 802  
New York, NY 10001, USA

## MANUFACTURING

### INDIA (RUDRAPUR)

India (Rudrapur) Sector 4,  
Plot No. 77, IIE Pantnagar,  
Sidcul, Rudrapur (Uttaranchal)

### INDIA (RANGPO)

SMC Compound  
Rangpoo East, Sikkim

### INDIA (CHYAGAUN)

Industrial Growth Centre,  
Chyagaun, Mouza Bongaon,  
Village Chatabari, Dag No. 40,  
Chyagaun, District Kamrup (Assam)

### INDIA (CHITTOOR)

Srini Food Park, MOGLI Village,  
Bangarupalayam Mandal, Chittoor  
District-517429, Andhra Pradesh

### NEPAL (NAWALPARASI)

CG Industrial Park  
Nawalparasi, Nepal

### NEPAL (LALITPUR)

CG Food Park, Sainbu  
Lalitpur, Nepal

### NEPAL (BARDIA)

CG Food Park, Bardia,  
Far Western Region, Nepal

### CHINA

Sajin Jiantang Jiudian  
Youxian Gongsi  
Xiang Ge Li La Xian (Sangri-la)  
Oldtown No. 31, Jinlong Jie Street  
Diqing Tibet Autonomous  
Yunnan P.R.C. 674400, China

### SINGAPORE

10 Anson Road  
#16-22, International Plaza  
Singapore 079903  
Tel: +65-6220-8721

### THAILAND

Thailand Unit 12J, 12th Floor,  
President Tower,  
973 Ploenchit Road,  
Lumpini, Pathumwan,  
Bangkok 10330, Thailand

### INDIA (SILCHAR)

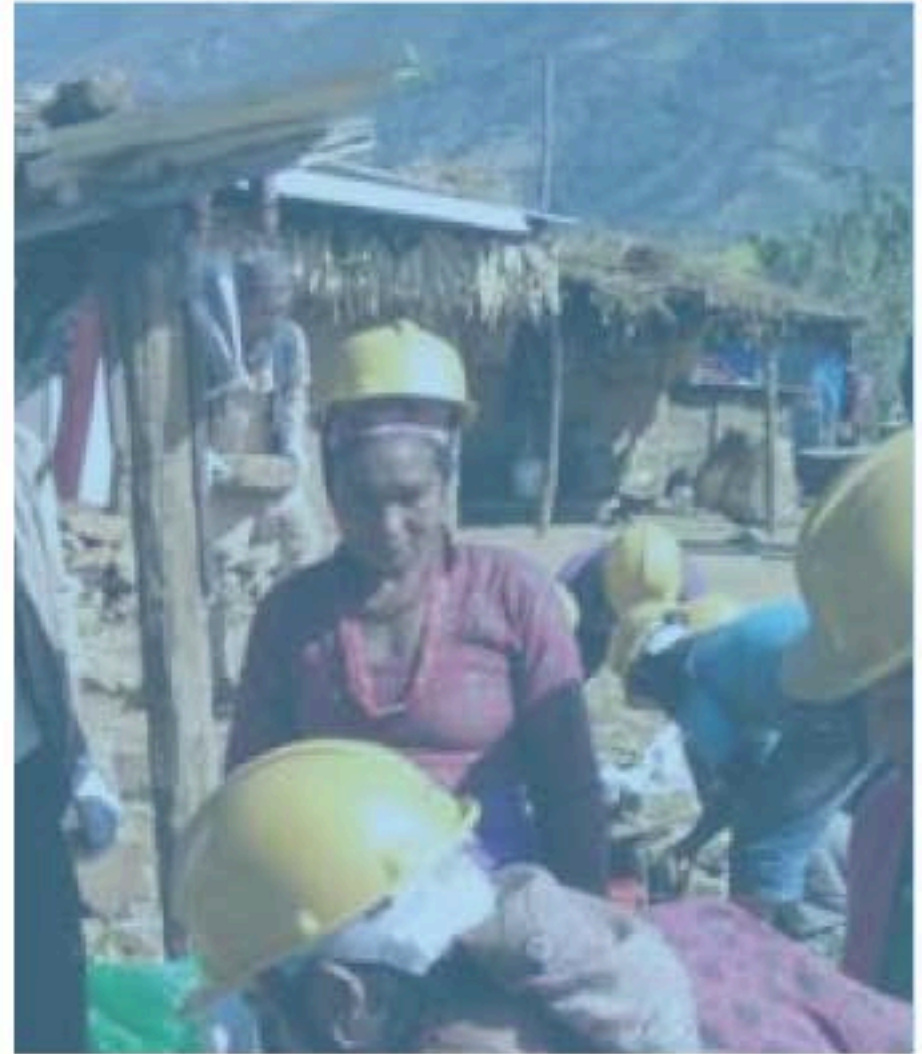
Khaspur, Rajabari, Road  
Dumarghat, Udhorbond,  
Silchar, Assam

### INDIA (PURNEA)

Industrial Growth Center  
BIADA, Maranga-854301 Dist.  
Purnea (Bihar), India.

# GLOBAL PRESENCE





**CG** CHAUDHARY®  
GROUP  
*Touching life everyday*

**CG Corp | Global®**

### Chaudhary Foundation

📍 Chaudhary House, Sanepa, Lalitpur  
P.O. Box: 1073, Kathmandu, Nepal

☎ Tel. : +977 1 5522330, 5529273