



**CHAUDHARY | FOUNDATION**  
TOWARDS SUSTAINABLE SOCIAL REFORM





# Message from the Chairman



The journey of Chaudhary Foundation began 24 years ago with the intention of improving the lives of our countrymen through community development efforts. Participating in such philanthropic activities has always been very important to my family and me, which is why we are invested in leveraging our corporate social responsibility duties to promoting a better and healthier Nepal. And currently, Chaudhary Foundation stands as one of the most effective social development organizations of Nepal – a result of this energy and passion.

Nepal, a country blessed with unique natural beauty, is also a nation of unity where people from various castes, religions and ethnicities can live together in harmony. It is a place I am proud to call home and feel honored to serve whether it is through business ventures or through philanthropic measures. Chaudhary Foundation truly embodies the values of nobility and humility in all aspects of the work it does – supporting students, entrepreneurs and marginalized community members alike across the country, including remote districts like Dolpa and Jumla.

Health, education, livelihood, entrepreneurship and disaster response are all components embedded in our Foundation's activities. For instance, Chaudhary Foundation is one of the pioneering organizations that implements fast and effective disaster response programs in the most rural parts of the country, whether it involves addressing the aftermath of a storm, flood or earthquake. Similarly, the Foundation conducts enterprise development programs in many districts of Nepal, supporting livelihoods in multiple villages in rural districts and mitigating

various social challenges. Regarding the education sector, we were able to facilitate and promote digital literacy in over 15 schools in the Nawalpur, Chitwan and Sindhupalchowk districts. Further, through the efforts of the Foundation, a permanent artificial limb medical center has been established in Nawalpur and has already given a new lease on life to over 500 beneficiaries.

However, there is always more work to be done. This report will not only take you through our journey as a foundation, but it will also help you see where we are heading, as every year we take on more responsibility to address both national and global Sustainable Development Goals (SDGs) to support the sustainable development of Nepal.

Just like the previous year, I am sure we will be able to impact more and take the Foundation and its work to newer heights. Let's come together and make our 25th year of service a year to remember!

Binod K. Chaudhary  
Chairman  
Chaudhary Foundation

# Message from the Vice-Chairman

Once again, on behalf of Chaudhary Foundation, I am delighted to express our profound commitment towards positive impact, as this past year has yielded tremendous results and touched the lives of countless beneficiaries across many sectors.

Social responsibility is an essential part of business in my mind, especially coming from those who have the platform to make such a powerful impact. In past generations, people in business tend to focus first on money with meaning only as an afterthought. Today, in a world with so many pressing issues, this can no longer be the case. It is therefore essential to highlight foundations that link transformative ideas to the public and private sectors and fully integrate the principles of Sustainable Development Goals (SDGs) in their operations, investments and partnerships.

Hence, CG has become the first of few businesses in Nepal to use their resources and networks to become a force for good and front the movement towards sustainable innovation. Through the Foundation, we have actively invested in community projects dedicated to creating socially responsible businesses that provide quality education, good health and a sustainable ecosystem, all of which are required to uplift Nepal and shape a stronger society so that every citizen can aspire to live a safe, healthy and productive life. A few noteworthy projects spearheaded by Chaudhary Foundation include the immediate response and aid efforts directed to the communities most affected by the 2015 earthquake. This included providing homes and schools around the country as well as developing a sustainable model village that will meet at least 10 of the United Nations' SDGs. In addition, Chaudhary Foundation was a driving force that fronted the construction of Shashwat Dham – Nepal's largest spiritual institute and top tourist destination – and partnered with the Bill & Melinda Gates Foundation to improve health and nutritional issues across the country. We are also pleased to announce the launch of our first projects directed towards addressing critical environmental concerns, including an electronic / electric-waste take-back initiative as well as introducing internal recycling measures within our headquarters.

I can honestly say that holding the position of Vice Chairman of Chaudhary Foundation is one of my proudest and most fulfilling ventures and would like to take this opportunity to thank all of the Foundation team, friends and all of our partners who have believed in us from the very beginning. It is through your support that we have been able to form such a powerful and effective conscious alliance. However, this is just the start – we will continue this journey to bring change to peoples' lives and serve as a role model for other businesses to adopt similar sustainable management practices.

Nirvana Chaudhary  
Vice Chairman/ Treasurer  
Chaudhary Foundation



# Hear from Our Beneficiaries



**RIGZIN BUDHA, DOLPO**  
Dolpo Eco-Lodge project,  
Nepal Social Business

"I am truly thankful to Chaudhary Foundation for providing me the opportunity of hospitality training for nine months and allowing me to work with CF staff at their office for more than three months. The Foundation team also provided me a barista training. I believe that the knowledge I have received and shared alongside the Dolpo Eco-Lodge project will change the lives of many people in the region through the promotion of tourism."



**SONAL KARNA, JANAKPUR**  
Unnati Project

"Chaudhary Foundation and Unnati have provided me an immense opportunity to showcase mithila artwork through hotels and offices. It has not just impacted me, but my friends and neighbors have also been given opportunities by Unnati. I thank them for providing me this experience."



**MANASHREE NEWA**  
Blue Waste to Value

"The Smart City Challenge through Nepal Social Business has actually been a turning point in my life. It groomed and mentored me and provided the right networks to actually implement my business idea of E-waste Management. The journey has been challenging and interesting. Big gratitude to Chaudhary Foundation for empowering us young entrepreneurs!"

# Executive Summary

With a strong commitment “Towards Sustainable Social Reform,” Chaudhary Foundation is continuously spearheading community development projects that yield a stronger and more sustainable future for Nepal.

In order to achieve this ambitious target, Chaudhary Foundation is fully committed to the principles outlined by the Sustainable Development Goals promoted by the United Nations Development Programme (UNDP). Hence, all of the Foundation’s projects are focused on holistic development practices.

One such example of this effort can be found in the field of post-disaster management for the 2015 earthquake – the catalyst for our Model Village project, where houses that were destroyed are being rebuilt. In the past year, over 170,000 CBSE (compressed block soil earth) bricks have been made for the completion of 70 houses – to be built by the villagers themselves through provided trainings.

Within the field of education, we have added computers in more than 15 schools in the Nawalpur and Sindhupalchowk districts. We are especially proud of this project because of the level of inspiration and practical knowledge transfer it has had on students and teachers alike in rural areas in

promoting digital literacy. We are committed to scaling up this project in multiple schools across various districts.

Chaudhary Foundation’s Unnati Cultural Village – a livelihood and skill development program – reached a major milestone this past year, as it prepares to open to the public. This project aims to enhance the development of Nepal’s art and craft sector, improve the economic prosperity of the surrounding area through the promotion of tourism, and serve as a platform to showcase several cultural themes and traditional art, craft, and indigenous skills.

In terms of social business incubation, we are proud to announce that our Dolpo Eco-Lodge project has also reached a major milestone and is on its way to completion. With the help of our hospitality team, all 6 lodges are infrastructurally sound and have the capacity to serve both national and international tourists. This project will drastically change the face of trekking in the Dolpo region and bring awareness to the natural beauty of Lake She-Phoksundo.

Apart from our regular programs, the Foundation was recently active in disaster response and emergency relief work after the windstorm in Parsa and Bara. In response to this storm, the Foundation team, alongside

Lions Club in Birgunj, donated hundreds of packets of food and everyday essentials. Also, our disaster team was dispatched to Rauthat and the Nawalpur area to distribute relief.

We are very honored to have had our work recognized through various awards such as Frost and Sullivan CSR award for social activities. Shashwat Dham – our spiritual temple – received the number one tourist destination award by the Ministry of Tourism and Civil Aviation. Further, the Prime Minister of Nepal, Mr. KP Oli, visited our spiritual center at Shashwat Dham in addition to our recently opened and inaugurated permanent artificial limb fitment center – CG Mahaveer Sabal Center. This center was fronted after conducting two successful artificial limb fitment camps benefitting over 500 beneficiaries in Nawalpur and Kathmandu.

Once again, we would like to thank every single one of our partners, friends, government officials, corporate houses, and beneficiaries across the country who have helped to make Chaudhary Foundation one of the most impactful social organizations in the country.

# Mission, Vision and Values



## Mission

Chaudhary Foundation believes quality education, good health and a sustainable ecosystem are required to uplift Nepal so that every citizen can aspire to live a safe, healthy and productive life.



## Vision

Chaudhary Foundation seeks to support Nepal in graduating from a least developed country to a developing country by 2022.



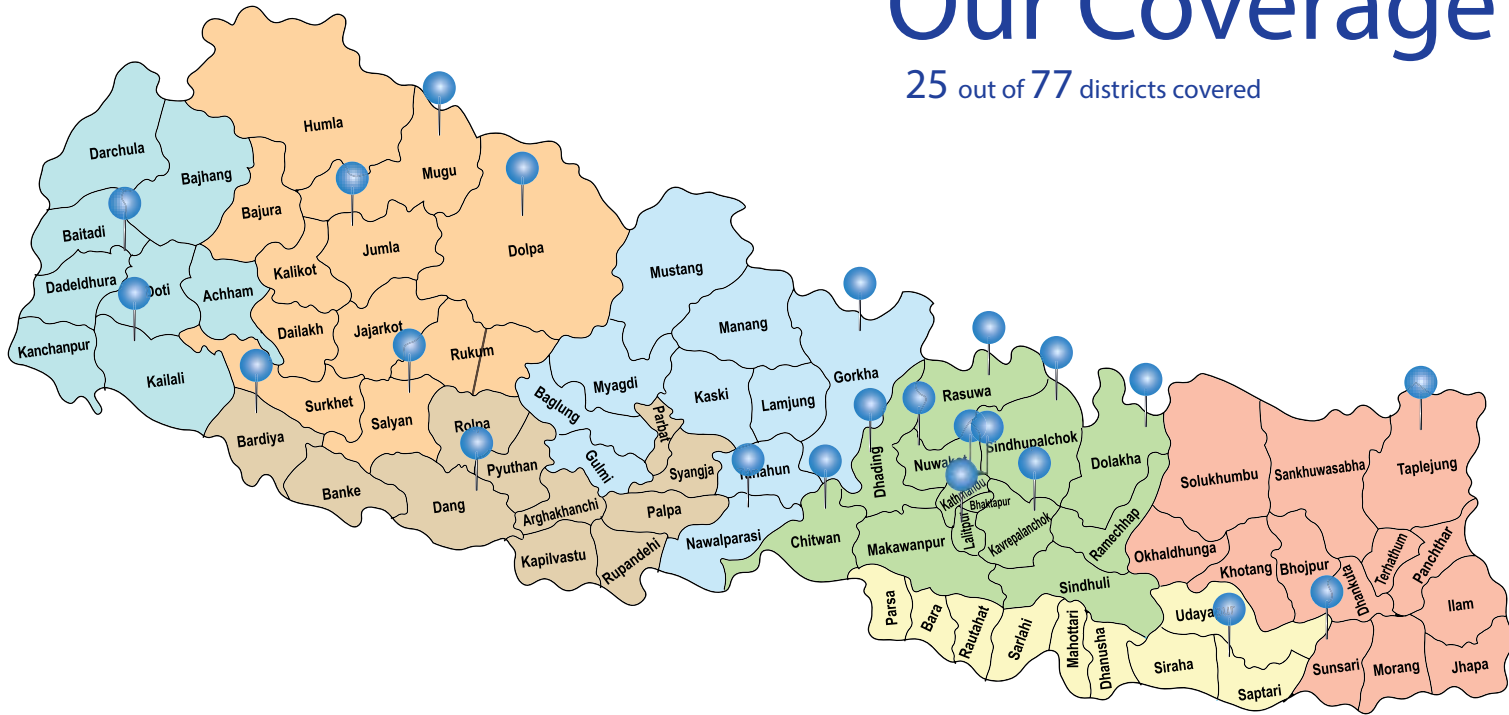
## Values

- Building a safe, healthy and productive society
- Empowering communities and individuals towards sustainable social reform
- Embracing cultural heritages
- Encouraging sustainable livelihoods
- Fostering equitable access to education



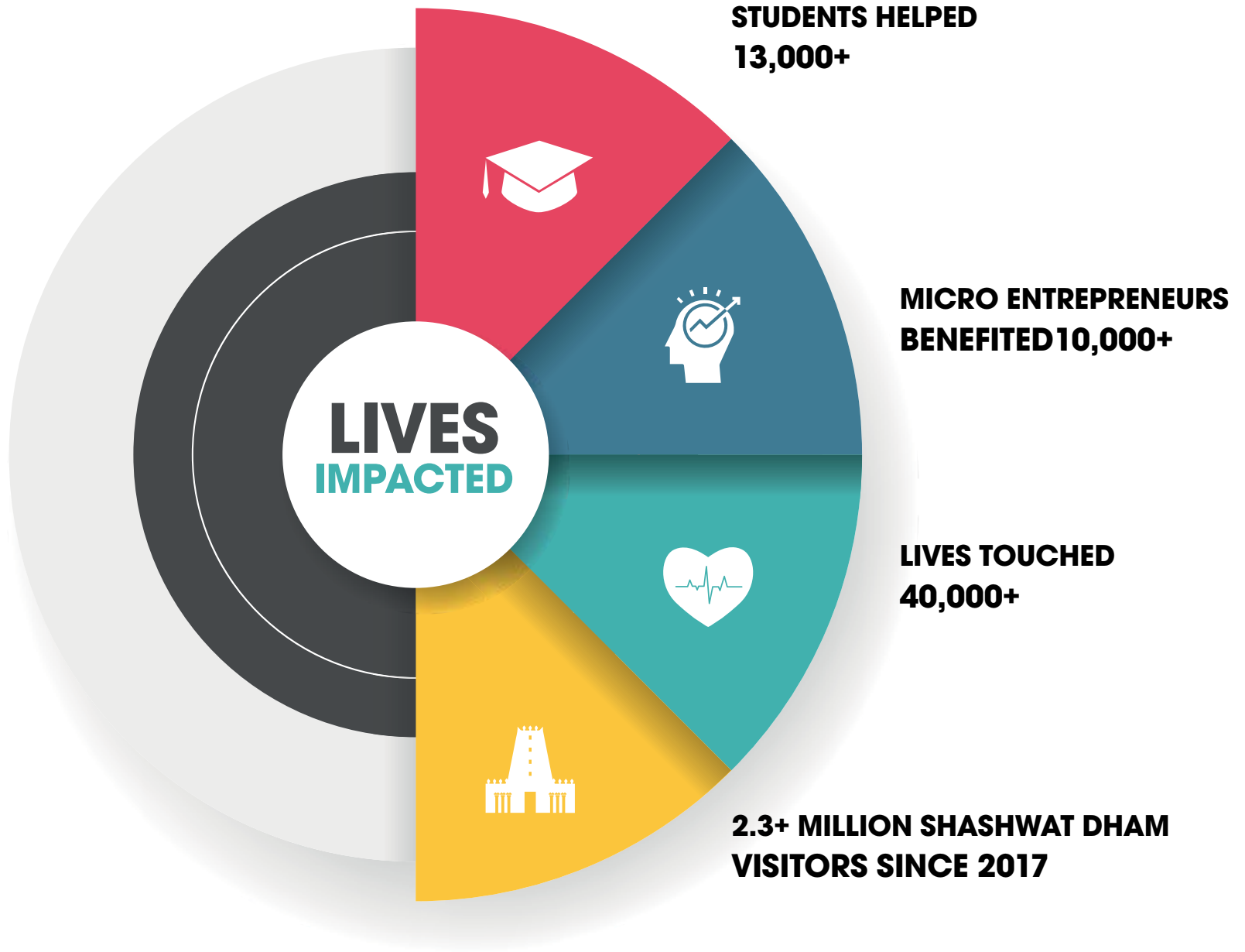
# Our Coverage

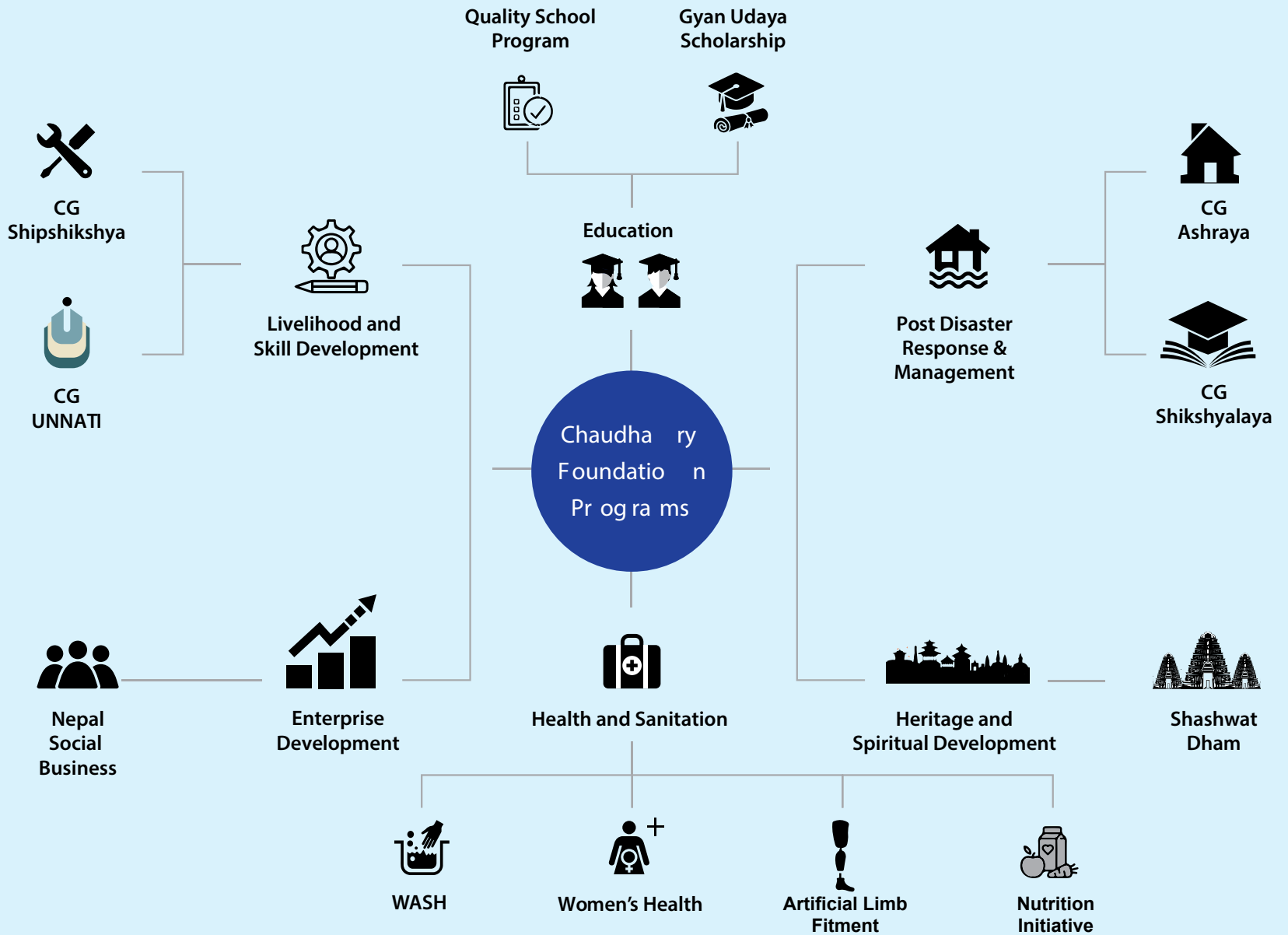
25 out of 77 districts covered



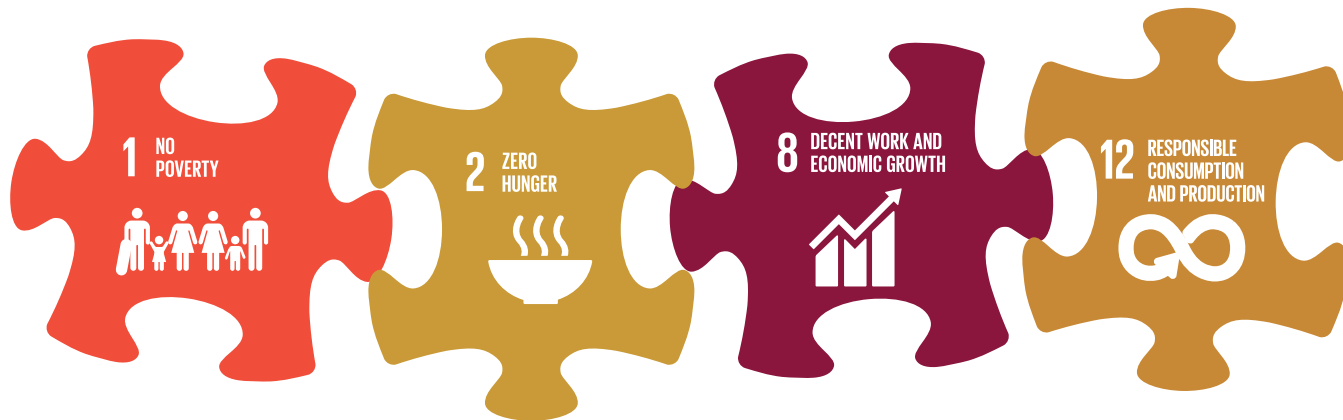
CG Ashraya	Gorkha, Dolakha, Rasuwa, Sindhupalchowk, Kavre, Dhading, Kathmandu, Bhaktapur, Lalitpur
CG Shikshshalaya	Dolakha, Sindhupalchowk, Kavre, Dhading, Kathmandu, Bhaktapur, Lalitpur, Nuwakot
CG Shipsikshya	Dolakha, Rasuwa, Kathmandu, Lalitpur, Sindhupalchowk
Livelihood Development	Gorkha, Nuwakot, Dhading, Lalitpur, Dolakha, Sindhupalchowk
Wash	Dolakha, Nawalpur, Sindhupalchowk, Chitwan, Lalitpur, Gorkha
Model Village	Sindhupalchowk
Gyan Uday Scholarship	Lalitpur, Nawalpur
Enterprise Development	Dolpo, Jumla, Dang, Salyan, Dadeldhura, Kailali
Artificial Limb Fitness Center	Nawalpur
Smart City Challenge	Kathmandu Valley
Post Disaster Response	Bara, Parsa, Nawalpur, Sindhupalchowk, Kathmandu, Lalitpur, Bhaktapur, Rautahat, Sunsari, Morang, Saptari, Siraha, Chitwan
Digital Classroom	Nawalpur, Chitwan & Sindhupalchowk
Culture & Spirituality	Kathmandu & Nawalparasi







# Enterprise Development



Chaudhary Foundation believes addressing social issues through business and enterprise will help reduce Nepal's poverty level.

CF's goal is to help Nepal reach its target of reducing poverty to below six percent by 2030. Our enterprise program, Nepal Social Business, focuses on bettering the economic status and reducing poverty in some of the poorest regions in the nation — including Dolpo, Jumla and Kailali — through social business innovation

# Nepal Social Business (NSB)

CG Nepal Social Business (CG NSB) is an impact investment program of Chaudhary Foundation under its Enterprise Development program. CG NSB was started to address various social challenges faced by our nation through sustainable social and economic development. This initiative's mission is to create greater economic and social impact by cultivating various social businesses and accelerating development work throughout Nepal. It also aims to encourage innovative entrepreneurship, especially youth-led, that can generate employment opportunities and financial sustainability. Currently, CG NSB has partnered with Lions Clubs International (LCIF) to incubate and invest in various projects in the mid-western and far-western regions of Nepal. CG NSB is determined to expand, advance, develop more partnerships, and to lead the way to create significant positive impact in our nation.

## Jumla Cluster

The nutritional status of children in Jumla is below the national standard, which is why the project that has been incubated there focus on reducing malnutrition in children ages 0 to 59 months — aligning with Nepal's goal to reduce malnutrition one percent by 2030 — and promoting sustainable produce. This project provides nutritious foods and their market promotion, which helps reduce hunger and provide access to nutritious products across the country.

Karnali Miteri Udhyog is a community-owned factory supported by Nepal Social Business that produces and fortifies food to contain necessary micronutrients, reach vulnerable families and educate people about healthy food habits. It focuses on producing nutritious, ready-to-eat food for children and pregnant women — like cookies, super flour and nutritional bars — at affordable prices. Its ultimate goal is to solve malnutrition at the local level.

## Dang Cluster

Dang is one of the largest valleys in Asia. Tulsipur, where NSB operates through the Dang Hosiery and Garment project, is the second largest city in the district and is the transition junction for many travelers of the entire district.

Dang Hosiery and Garment produces school uniforms and tracksuits to cater to schools and its students within the Dang district as well as nearby districts. The project primarily employs female tailors — around sixty percent of staff are women.

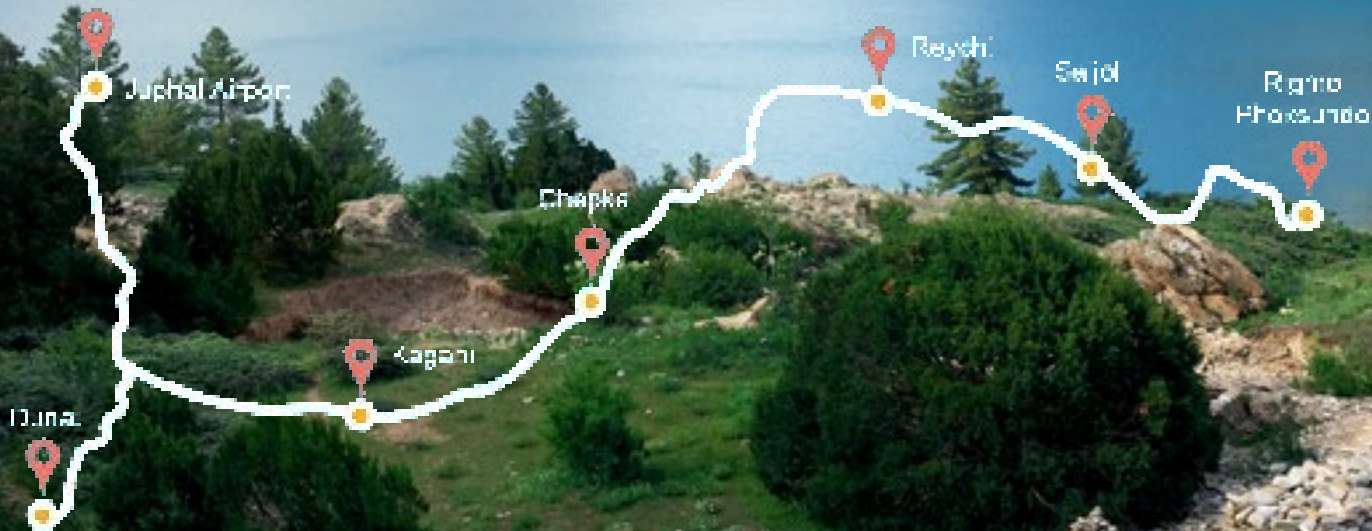
## Tikapur Cluster

Though a newly formed city, Tikapur (Kailali District) does not have proper waste management facilities. Most of the waste is dumped in public areas — polluting the environment and harming land fertility. And while the city is bustling with new businesses that seemingly emerge daily, more and more waste is being generated, especially single-use plastic, leading the local government to plan on banning plastic bags. However, without any alternative solution, the ban never came into effect, which is why Mahalaxmi Jhola Udhyog, supported by NSB, aims to tackle single-use plastic by replacing them with environmentally friendly bags.





# Dolpo Eco-Lodge Project







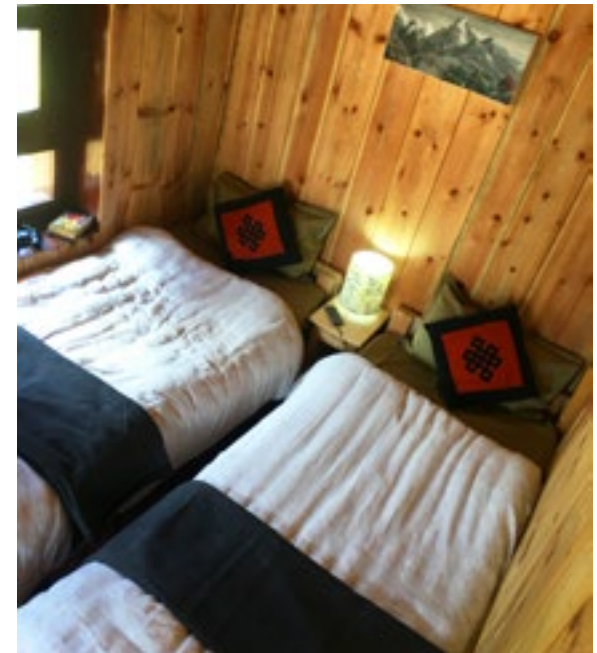
Dolpo is a remote, high-altitude region located in the mid-western part of Nepal. This area is surrounded by amazing landscapes and the majestic Himalayan ranges, including Mt. Dhaulagiri and Mt. Kanjirowa. Throughout the Shey-phoksundo trail, one will have the opportunity to experience the Tibeto-Nepalese culture as well as the native Tibetan folk religion – Bon. One will see the Shey-Phoksundo lake, second deepest lake in Nepal, which reflects a shimmering turquoise color. In addition, the Shey-Phoksundo National park hosts various Bon po monasteries, which are major attractions of the Dolpo region and is home to exotic flora and fauna, including endangered species such as snow leopards, blue sheep, Tibetan wolves and musk deer as well as an abundance of rare medicinal herb species. All the while, rich Tibetan traditions and culture are present throughout the region. Dolpo truly is a hidden treasure waiting to be explored.

However, despite great trekking potential, the region is still less developed in comparison to other trekking trails in Nepal due to its challenging topography. Hence, the Dolpo Eco-Lodge project, launched by NSB, will overcome these challenges and allow for trekking opportunities in the area.

The Dolpo Eco-Lodge project is an initiative of Nepal Social Business to promote the tourism of the Dolpo region and increase the livelihood of Dolpo community. The objectives are to help in promoting local art, culture and cuisine through a sustainable model as well as eco-friendly activities and practices throughout all existing lodges along the trail.

The Dolpo Eco-Lodge project is located along the Juphal-Shey Phoksundo trail in the Dolpo region. In 2016, the project identified six different lodges to improve their facilities and promote the lower Dolpo trail by engaging local entrepreneurs. The project aims to promote Dolpa, the trekking route to Lake Phoksundo and upgrade existing lodges to provide comfortable and professional service to trekkers and travelers. The lodges are expected to be completed in late 2019.

The Dolpo Eco-Lodges are situated at every junction from Juphal to Lake Shey-Phoksundo, specifically at Juphal, Dunai, Kagani, Reychi, Bagral (Saijol) and Rigmo. These lodges offer cozy bed and breakfasts, organic food, showers and clean bathroom facilities to all trekkers. They also offer rooms full of warmth where anyone can feel comfortable and secure.



# Putting the Shey-Phoksundo Trekking Route on the Global Trekking Map





# Smart City Challenge

The Smart City Incubation program was developed under CG NSB, in partnership with Global Peace Foundation and Blue Waste to Value, to empower youth in developing sustainable business concepts that incorporate environmentally friendly policy – leading to the transformation of smart and green cities.



CG NSB, in partnership with Global Peace Foundation and Blue Waste to Value, held a Smart City Incubation Program from June 28, 2018 to August 16, 2018 at CG head office in Sanepa. This program incubated 5 candidates who had presented their concept of making Kathmandu a 'smart city'.

On May 14, 2018, a call was made for an application for the Smart City Challenge. The objective of this call was to empower youth towards social business and to comprehend the optimum utilization of Information and Communication Technology (ICT) in the

planning of innovative partnerships for the betterment of society and the environment.

It was also an initiative to introduce CG Nepal Social Business to youth in urban areas and use their creativity and business ideas to mitigate the social issues within an urban setting.

Selection of the possible candidates was done by CG NSB, Global Peace Foundation and Blue Waste to Value. The projects were based on waste management, environmental management or any project based on the building of 'smart and green cities'.

Out of 20 applicants, 5 were selected for this intensive incubation program where the participants were given knowledge on various business acumen throughout a 2-month period. Besides just traditional business knowledge, the finalists were also familiarized with the environmental and social aspects essential for sustainable business.

The selected projects were:

- Tyre Treasure – Upcycling used tires into beautiful furniture
- Electric / Electronic Waste Recycling – Proper management and recycling of e-waste
- Avartan Technology – An IOT based company that provides innovative solutions through data driven systems
- Floral Incense – Recycling floral waste into floral incense
- Sustain Store – Reusing used clothes for resale or using the cotton for cushion production

# E-Waste Management

Rapid urbanization of the Kathmandu Valley has left behind increasing levels of waste without proper systems of disposal in place. Throughout the country, there are more than 1,000 toxic substances associated with electronic waste that pose a serious threat to human and environmental health if not disposed of properly.

Therefore, Chaudhary Group, the market leader of the electronic sector in the country for the last 30 years, is undertaking the need of proper e-waste management.

CG Electronics – in partnership with Chaudhary Foundation and with recycling partner Blue Waste to Value — is addressing the need for proper e-waste management by implementing its first CSR initiative – a take-back system located at LG Shoppe / CG Digital locations. This program was launched at LG Lifestyle Shoppe, Minbhawan on June 4, 2019.

This take-back system is designed in two-parts: the door-to-door model and the drop-off model. Those wishing to contribute can drop off their unwanted e-waste at any of the eight LG Shoppe / CG Digital locations across the city. Door-to-door service will be available for working or non-working televisions, refrigerators, or washing machines. Any brands are welcome.

In return, Chaudhary Group hopes to encourage a sustainably responsible community, making a conscious effort towards a safe and healthy environment. Discount coupons will be available for limited items collected by the door-to-door model.



Now we've made it easy to recycle your used electronic products



<p><b>What Do We Take?</b></p> <ul style="list-style-type: none"> <li>• Electronic devices that you do not need anymore (working/ non working)</li> <li>• Any brands</li> <li>• Examples: TV, fridge, grinder, sound box, mobile phones, iron, fan or any other home appliances.</li> </ul>	<p><b>Drop-Off Points</b></p> <ul style="list-style-type: none"> <li>• LG Shoppe, Minbhawan</li> <li>• LG Shoppe, Imadol</li> <li>• LG Shoppe, Chabahil</li> <li>• LG Shoppe, Jawalakhel</li> <li>• CG Digital, Tangal</li> <li>• CG Digital, Kumaripati</li> <li>• CG Digital, Rabibhawan</li> <li>• CG Digital, Naya Bazaar</li> </ul>
<p><b>How to Be a part ?</b></p> <ul style="list-style-type: none"> <li>• Drop off your e-waste at any LG Shoppe/ CG Digital</li> <li>• Door-to-door pick-up available for LED/ LCD television, refrigerator, washing machine</li> </ul>	<p><b>What Do I Get ?</b></p> <ul style="list-style-type: none"> <li>• Discount coupons from CG <i>*limited items apply</i></li> <li>• Becoming a part of an environmentally responsible community</li> <li>• Conscious effort towards a safe and healthy environment</li> </ul> <p>For more information, Please call: 9813806667</p>

Initiated by



Supported by

CHAUDHARY FOUNDATION

Recycling Partner



# Education



Chaudhary Foundation believes equitable and quality education leads to lifelong learning opportunities and empowers marginalised and vulnerable students.

Since its inception, CF has concentrated on creating equality within the education system of the country. Our programs focus on providing scholarships to students, supplying classrooms with digital equipment and providing skill enhancement trainings to teachers in rural Nepal.



## Gyan Uday Scholarship

CG Gyan Uday Scholarship is a financial assistance program that helps students continue their education and discover opportunities through the Chaudhary Group's "Educated Nepalis: Prosperous Nepal" initiative.

The students are selected on merit and exam scores but are required to have a parent who works for one of CG's factories in Kathmandu, Lalitpur and Nawalparasi or are permanent residents of those areas. The scholarship is awarded to inspiring students, especially those who are in need, indigenous or women. Since 2010, Gyan Uday has provided financial aid to over 465 students. The scholarship is awarded annually to give students the chance to pursue higher education after their secondary education examination (SEE).

## Quality Schools Program

One of the most important ways to improve education and make it equitable is by equipping classrooms with modern technology — including desktop computers, laptops, TVs, projectors, wireless internet and an eLibrary. This is done through the Quality Schools Program's (QSP) Digital Classroom initiative.

Throughout the process, CF hosts various skill development programs to give teachers the necessary computer skills and help them prioritize female student participation.

CF also believes that improving Nepal's digital skills will allow separated family members and friends stay in touch through social media platforms and other methods of digital communication. Each institution is given access to an offline eLibrary from Open Learning Exchange (OLE) Nepal that is comprised of 8,000+ eBooks, thousands of informational videos, access to Wikipedia and a digitized version of Nepal's curriculum.





# Digital Classroom

CG, a market leader in Nepal's Electronic segment for the last 3 decades, and LG, a worldwide electronics giant have long been partners in the business sector. But it was the year 2015 which further intensified and levelled up their partnership approach. After the devastating earthquake of 2015, both the organizations have been pursuing community development activities in Nepal. LG was one of the major partners of Chaudhary Foundation's post-disaster reconstruction activities.

After the successful completion of the reconstruction activities, both the organizations have now formed a structured and sustainable partnership model by implementing an effective and professional development program. LG has since been supporting the Quality Schools Program (QSP), one of CF's most successful programs, to bridge the gap between rural communities

and their access to modern technology by digitizing classrooms and providing skill enhancement trainings to schools in rural Nepal.

With the objective of promulgating digital learning, Chaudhary Foundation has introduced the "Digital Classroom" in 10 different schools across the country with 10 more schools to be implemented by the end of year 2019. The revolution in the ICT industry over the last two decades has redefined the meaning of the term "literacy". Chaudhary Foundation strongly believes that each Nepali student should have access to digital education, which will help them connect to the global world and ultimately become a global citizen.

LG has supported Chaudhary Foundation's initiative by providing several ICT equipment like laptops and desktop computers, TVs,

projectors and e-libraries for students in 10 different schools over the last two years, allowing the students to learn in a very easy and convenient manner.

In Nepal, digital technology education is still out of reach for many schools, and the literacy rate of Nepal is 65.9%, according to the Nepal Census 2011 report. Hence, much efforts are being made in this regard to improve the digital literacy rate as well as to connect families with a family member(s) who have gone abroad.

The digital classrooms initiative has provided 10 schools with:



72 Desktop Computers



21 Laptops



10 Projectors



10 TVs



E-library program



# Success Story



“There were no computers in my school before. After we received computers, I have gained a big interest in using computers. I have already learned typing Nepali and English, making paintings, etc.”

Sandhya Pulami Magar  
Grade 7 Student

Shanti Shreejana Basic School



“Earlier the students didn’t want to come to school but now they don’t want to go home after school. I am very thankful to Chaudhary Foundation for establishing a digital classroom in our school.”

Radha Bastakoti  
Principal

Kalika Basic Level School

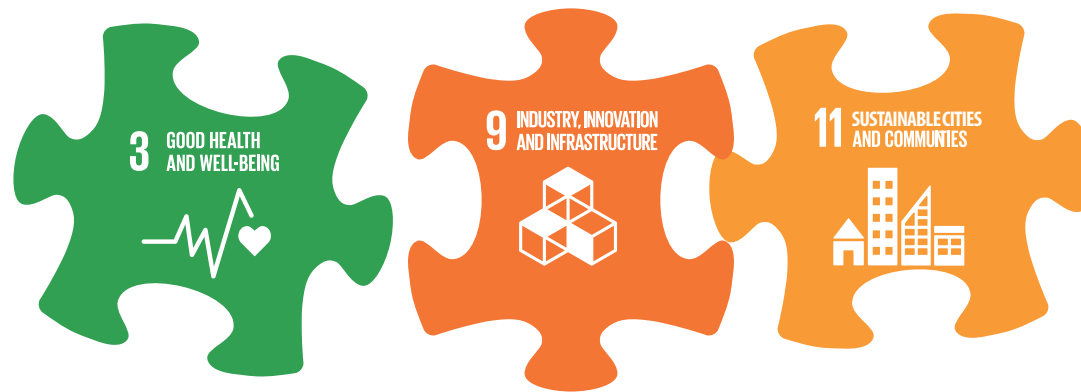


“We had only the theory classes before. But with access to computers, the students are learning fast with practical lessons. I am very happy to see quick progress in the students. This was possible only with the help of Chaudhary Foundation.”

Jyomo Hise Chhyogyalmo  
Chairperson

Ahimsawadi Orphan Basic School

# Post- Disaster Reconstruction and Management



Chaudhary Foundation believes everyone deserves dignity and aid in times of natural disaster.

CF has a dedicated disaster response team (DRT) to provide immediate relief following natural disasters. This team was formed after the 2015 earthquake, when the Foundation provided long-term humanitarian response to the communities most affected. For any natural disaster, the response and relief team mobilizes and provides on-the-ground support to coordinate disaster management to those in need. The goal is to reach the location, provide relief materials and do the assessment within 24 hours of the disaster.



## Post-Earthquake Relief (2015)

Chaudhary Foundation responded as an emergency responder, mobilizing hundreds of its staff and distributors during the earthquake of 2015. Senior management along with staff distributed 600,000 wai wai packets, more than 20 tons of ready-to-eat bhujija and thousands of bottles of juice and water..

CG Ashraya and CG Shikshyalaya was the disaster management project under which more than 3000 transitional shelters were handed over and around 40 schools were handed over to the community in 10 different affected district. Many houses are still intact and students are studying in those classrooms. It was one of the milestone project that we were able to help our nation and our beloved country men in times of need.



600,000+ packets of  
Wai Wai noodles



20+ tons of  
ready-to-eat Bhujija



10,000+ bottles  
of water and juice

## Post-Flood Relief (2017) & (2019)



Chaudhary Foundation's Disaster Response team, in coordination with its business units, has provided immediate flood, storm, windstorm and rainstorm relief. With support from CG Foods and CG Brewery, the committed disaster response team could effectively reach various affected areas like Parsa, Bara, Nawalpur and Rauthat in during recent disastrous events. Dry noodles, water, medical supplies, blankets, mattresses and CGI sheets are some of the life-saving materials that the Foundation distributed to beneficiaries in each of the districts, in close coordination with local authorities and administration. In total, the Foundation provided supplies and assistance to over 10,000 people (2,500 households) in the Nawalparasi, Sunsari, Chitwan, Saptari and Bardiya districts.

## CG Ashraya



## CG Shikshyalaya



## Storm Relief (2019)



# Model Village

Integrated Model Village is thriving village where we are working with the objective of enhancing sustainable development and the resilience of economically marginalized community affected by 2015 Earthquake. The aim is to construct 70 households that would serve a community of over 350 residents and try to integrate as many of the Sustainable Development Goals (SDGs). It will include all basic utilities — like clean drinking water, quality education, community and health centers, livelihood and skill development activities etc. For this we are working closely with the National Reconstruction Authority (NRA), and the Local community.

As a first major step towards the construction, the community have produced all the required numbers of around 200,000 earthquake resilient Compressed Stabilized Earth Bricks (CSEB), which use locally sourced soil mixed with cement. All the required equipment and training were provided by the Foundation.



HOUSE DESIGN



The three major components with their specific goals are:

#### Component 1 Rebuilding & Reconstruction

- Permanent House- 400-500 Sq. ft.
- Green Space/ Communal Park/ Children Park
- Community Center-1000 Sq. ft.

#### Component 2 Skill Livelihood Development

- Mason & brick making Training
- Plumbing Training
- Women Livelihood Project
- Digital Literacy Classes for Students & Youth esp. women

#### Component 3 Health & Sanitation Improvement

- Health Routine Check up at community Center
- Water Supply System and Water distribution system
- Water purification system





COMMUNITY PARK



QUALITY EDUCATION



WATER TANK



ECONOMIC EMPOWERMENT



HOUSE DESIGN

# Health and Sanitation



Chaudhary Foundation believes everyone has the right to good health, regardless of race, religion, gender, ability or income level. CF knows that reducing health disparities means tackling complex issues, which is why our programs focus on a variety of problems that affect people across Nepal — including women, children, minorities and people living with disabilities.

# WASH

It's estimated that around 80 percent of Nepal does not have access to safe and clean drinking water, which is why CF focuses on upgrading living standards through the water, hygiene and sanitation (WASH) project called Safa pani Swacha Bani i.e Clean Water, Healthy Habit.

Some of Nepal's largest WASH problems are water pollution and scarcity, especially

in rural and remote areas. To combat this, the Foundation supports healthy and safe drinking water and capacity building activities — including information dissemination, education and communication (IEC) materials, community awareness, providing clean and safe drinking water to schools and the maintenance of WASH facilities.



Placing water filtration plants in 5 schools



Processing 1,000 liters of water per hour



Providing 1,000+ students and 5,000+ community members with safe drinking water

## Clean Water, Healthy Habit

Chaudhary Foundation and Planet Water Foundation, a US-based NGO working in various parts of the world providing access to clean, safe water to nearly one million children, have teamed up to provide sustainable community-based water filtration systems to schools across Nepal. The project will focus primarily on water, health and hygiene education of school children and the community.

The objective of the program is to contribute to rural development by deploying community-based water filtration systems and implementing hygiene programs throughout different schools in Nepal by 2020.

"Our Vision is to create sustainable community development through various projects that Chaudhary Foundation has initiated. The Foundation believes that school children and schools are the primary focal areas for sustainable development. These initiatives will provide relief to thousands of children from various waterborne diseases by ensuring safe drinking water and improved hygiene practices.

-Mr. Nirvana Chaudhary



# Gorkha Water Pipeline Installation Program

After the devastating earthquake of April 2015, Chaudhary Foundation, with its Post-Disaster Response and Management team, quickly mobilized rescue, relief and recovery efforts immediately. With support from various partners worldwide, Chaudhary Foundation moved into action and started making temporary shelters and schools in 10 out of 14 highly affected districts.

Chaudhary Foundation mobilized its team to build 279 temporary shelters in one of the worst affected areas, Gorkha, which was the epicenter of the earthquake. Because building more resilient communities is one of its key principles, Chaudhary Foundation provided continued support, even after the completion of the temporary shelter project, for the families of Ghairung to install water pipes directly to their houses, as the earthquake left the households in that area without a proper water supply system.

The Gorkha Water Pipe Installation project was initiated by Chaudhary Foundation with support from Seeds Technical Services (STS) to provide water supply to 117 households in Shree Shahid Laxhan Municipality, Ghairung, Gorkha. Chaudhary Foundation conducted a detailed study of the water supply system of the village and its source starting in 2018. The villagers also provided their part of contribution to the project through free labor, and created a Water Usage Committee with at least one member from each household to aid in this project and conduct regular meetings. The project was successfully completed in 2019 with 5 water tanks constructed for storage and fitted water pipes and tap meters in all 117 houses.



“I have a nuclear family--in my house it is me, my husband and my two daughters. After the earthquake, our water source was buried and our water taps went dry. I had to walk every day up to 30 minutes to fetch water. Usually I had to go twice or thrice every day just to get water. Now after the completion of this pipeline, we get water directly at our house. I don't have to travel long to fetch water, I can now give time to other household chores as well as to my daughters.”

– Meera Gurung, Ghairung



# Women's Health

Chaudhary Foundation believes healthy women will create a wealthy world — women's health is a major factor to help improve the health of the family, the community and ultimately, the world. Chaudhary Foundation is tackling some of the largest health issues that women in Nepal face through two initiatives.

Despite the trend for Nepali women's overall life expectancy increasing, they still lack access to health facilities, hygiene, sanitation and adequate education — creating problems

in both their lives and society as a whole. To solve these problems, Chaudhary Foundation has organized health camps that combine education with skill development training to produce low cost sanitary napkins, as well as a commitment towards Family Planning 2020, the summit held in 2017 by UK Government along with UNFPA and Bill and Melinda Gates Foundation.

## FAMILY PLANNING 2020 COMMITMENT

### COMMITMENT 1

Chaudhary Foundation commits to help the Government of Nepal to strengthen Family Planning uptake in Nepal through generating demand for services through support to the use of mass communication tools, building on the work of Government of Nepal/USAID's HC3 programme.

### COMMITMENT 2

Chaudhary Foundation commits to support the Government of Nepal and work with health sector development partners to strengthen supply chain management of FO and other health commodities, with a focus on the sub national level. Areas of engagement are yet to be determined but will focus on the Foundation's comparative advantage and where gaps lie. Initial focus will be on one province.

### COMMITMENT 3

Chaudhary Foundation commits to supporting approaches to expand the use of adolescent sexual and reproductive health mobile phone app (Khulduli), in particular among youth and in remote areas, developed by the Government of Nepal in collaboration with development partners.



# Artificial Limb Fitment

There are an estimated 100,000 people in Nepal living with amputated limbs due to causes ranging from motor vehicle crashes to cancer. And for the first time in years or even decades, 476 people can walk again thanks to the prosthetic limbs they received during Chaudhary Foundation's Artificial Limb Fitment Camps in Kathmandu and Nawalparasi.

The idea was born after Chaudhary Foundation signed a memorandum of understanding with the Indian Government in 2017 to bring Bhagwan Mahaveer Viklang Sahayata Samiti (BMVSS or Jaipur Foot) to Nepal, which provides prosthetic limbs, calipers and other equipment to beneficiaries free of charge.

The Foundation, in partnership with Jaipur Foot and the Embassy of India, ran the joint initiative through the name "Artificial Limb Fitment Camp" and was supported by Sahaj Community Hospital in Nawalparasi and Norvic International Hospital in Kathmandu. These services were provided by Jaipur Foot — an Indian-based organization






which uses low-cost, high-speed prosthesis limb technologies that are some of the most effective in the region.

In addition, we are proud to announce that the Sahaj Community Hospital was able to receive support from Chaudhary Foundation on the establishment of a permanent center -- CG Mahaveer Sabal Center -- on its premises and the human resources to operate the center in order to provide sustained and much-needed permanent artificial limb services as well as post-visit services.

The beneficiaries described feelings of alienation and isolation from family, friends and communities after the accident that caused them to lose their limbs. However, they said their attitudes changed during the camps.

As part of the CG family, we should be proud to be involved with a project that will enhance the overall well-being of Nepal, because everyone has the right to good health regardless of race, religion, gender, ability, or income level.



-  It's estimated that 100,000+ people need prosthetic limbs in Nepal
-  The Artificial Limb Fitment Camps helped 476 beneficiaries get 508 prosthetics from Jan. 11 to Feb. 21
-  An average of 15 beneficiaries were served daily
-  With 59 limbs provided to 58 beneficiaries in Kathmandu
-  And 449 limbs provided to 418 beneficiaries in Nawalparasi

"The artificial limb camp was the first of its kind in Nepal, where we were able to serve around 500 amputees. This is something we feel very proud of — providing service to those in need."

Varun Chaudhary  
The executive director of Chaudhary Group

# Success Story



## Dhana Maya's Story

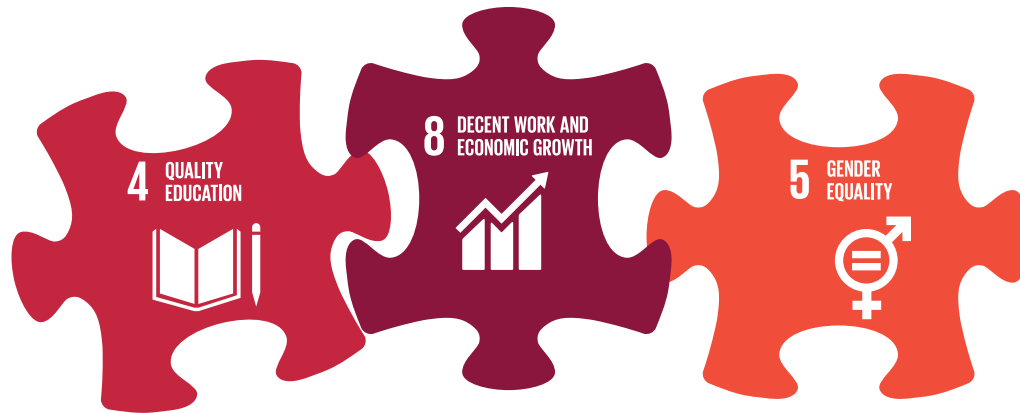
Dhana Maya said she works hard everyday to be nice to everyone so she can be happy. After all, her first piece of advice is always, "if you [are] nice to others, you will be happy." However, despite her kindness, Dhana said she isn't truly happy because she has felt different for the past 35 years. It started with losing her leg in a car accident. But with a big smile on her face, she proudly proclaimed she was "happy now" because she was able to walk for the first time in decades with her new prosthetic leg that she received on Jan. 17 during the Nawalparasi camp.

## Riya's Story

A bus hit Riya, who was 3 at the time, while she was walking to school. Her leg was crushed and — after being rushed to a hospital — it was immediately amputated. During the months that followed, Riya's parents said they weren't sure if she would make it. However, she slowly became stronger and began learning to live without a leg. Three years down the line and Riya is finally getting her life back through the Jaipur Foot initiative. She was given a prosthetic leg on January 13, 2019 during the Artificial Limb Fitment Camp in Kathmandu. Riya said she is "proud" of her new leg and can't wait to get back to doing things that little girls do.



# Livelihood



Chaudhary Foundation believes livelihood and skill development are two critical elements to upscale Nepal's economy. In many of our rural areas and even in urban cities, employment is one of the biggest challenges. Our programs are intended to create an economic transformation by improving people's skills and creating livelihoods in order to improve their living standards.

Our programs within this sector focus especially on youth, women and indigenous groups and communities with traditional skills and cultural skills. Converting traditional and cultural values into economic benefits is the path Chaudhary Foundation is following in order to strengthen the overall economy of the country.



Unnati is a skill development programme that promotes sustainable livelihoods by empowering women from socially deprived communities through income generating opportunities and market linkages. Market connectivity and awareness on demand and delivery at the market level is a key innovation Unnati is trying to inject among rural producers. Handcrafts, artifacts and traditionally used materials such as bamboo, pottery and wood craft has a real value in national market and international market. Thus, Unnati is an initiative which supports a future for women, youth, indigenous artists, urban entrepreneurs and traditional and cultural communities by providing them better income generating opportunities while safeguarding their economic standards and building up their morale, values and esteem.

The key objectives of Unnati are as follows:

- To enrich and empower national heritage through the revival of cottage industries and indigenous livelihood practices in the field of arts, crafts, performance, agriculture, and various traditional industries.
- To preserve and promote livelihood practices that are threatened by

fast urbanization and loss of identity and culture.

- To educate craft practitioners and update traditional techniques to suit modern day requirements, so that these skills find their way back into people's lives through transformation in design and functionality.
- To create a range of products and services that cater to a wide market – from the very base of the economic pyramid to high-end consumers.

Unnati Projects are related with following:

- Unnati: The celebration of art, culture, and tradition
- “Artisan” the brand: Bringing the best Himalayan treasures in the form of handcrafts and experiences
- Unnati Cultural Village: Art and craft center for training, capacity building and exhibition
- Market Linkage: Connecting Nepali small handicraft enterprises with market across the world.



## Unnati Bazaar, Shashwat Dham

Located at Shashwat Dham — a popular destination for tourists and spiritual travellers alike — is the Unnati Bazaar, which is where you can purchase a diverse range of traditional crafts made by traditional and indigenous artists especially women across Nepal. Unnati Bazaar is supporting dozens of entrepreneurs through market linkages that Unnati created for their products. This Bazaar has been a major attraction for people coming to Shashwat Dham and this platform is also orienting and raising awareness for people regarding the value of local products made by Nepali artists. This platform is not just a Bazaar, but it is also the source of inspiration and information to many others to show that once skills are harness, economic prosperity is possible.

- Textiles
- Hemp products
- Mithila paintings
- Felt
- Handmade papers
- Beaded jewelry
- Pashmina shawls
- Organic food products
- Khasto





# Unnati Cultural Village (Harkapur)

The Unnati Cultural Village (Harkapur) encompasses over 50,000 square meters of land in an idyllic setting of Nawalpur district in central Nepal, eighteen kilometers west of Narayanghat. A cultural village is the unique vision of Unnati program in order to promote and conserve Nepali traditional handcraft along with culture, diverse ethnic beauty, cuisine and celebration of art. This will be a perfect destination for art, craft and culture lovers from around the world to rejoice the beauty of Nepal at one place.

Also, Unnati Cultural Village will be the premise to celebrate art,

culture, tradition, cuisine through art festivals. Such art festivals will promote art community and it will enhance the tourism of an entire country.

There are various components of Unnati Cultural Village:

## 1. Craft Training Center

A craft training center with classrooms dedicated towards training related with design and innovation. Craft center will turn richness of art and craft into an economic prosperity creating livelihood.



## 2. Art Guest House

### A. Junkiri Villa

An elegantly engineered Tharu and Mithila styled 3 key room building defines purpose of the art guest house called Junkiri Villa signifying thousands of fireflies illuminating this block. A private space for artists, writers, poets, musicians, crafters are well portrayed along with authentic furniture and touch up provided to reflect the beauty of Nepal.

### B. An Art Residency

A two room block with a private studio and an outside porch stands on the lotus pond. This is an art residency where artists from anywhere in the world can come and use this space.

### C. Tharu Ghar

A beautiful tharu home with 5 tharu rooms are named after festivals celebrated by the tharu community Jitiya, Faguwa, Sohari, Anant and Barhana. Visiting artists or any other guests will be accommodated in the Tharu homes.

## 3. Art Gallery

The number of art galleries in this part of the country are limited. Since there will be lots of artists visiting at the cultural festival and using this space for their creativity, this is an exhibition space of their work. This space will create an opportunity for artists to exhibit across the country, especially promoting local artists.

## 4. A Cultural Restaurant (Tharu Newari Thakali)

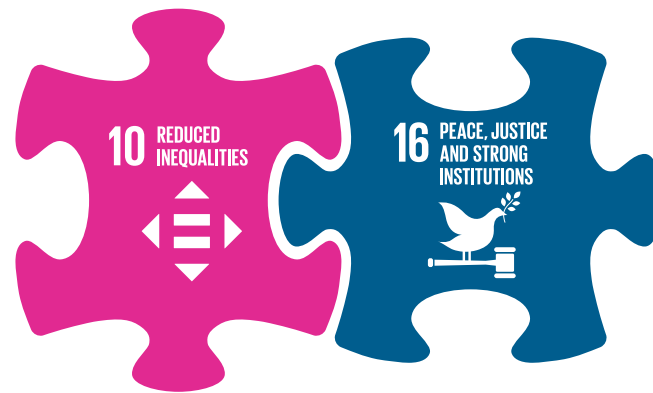
The Village also consists of a cultural restaurant representing various ethnic cuisines of Nepal. This is an initiative to develop and promote a cultural gastronomy of the country. People coming from different parts of the country and the world can taste various ranges of Nepali cuisine representing the Himalaya, Terai and Hilly regions

## 5. Organic Garden

The organic garden is one of the most important elements of the village. This garden will be growing various vegetables and will be provided in the kitchen of the cultural restaurant. The organic garden will also showcase to the visitors about the essence of organic farming, growing their own vegetables and producing their own compost in order to produce food.



# Culture & Spirituality



Chaudhary Foundation believes that preserving culture and heritage brings inner peace and tranquility to the people of Nepal.

CF's programs are designed to promote and preserve Nepal's rich and diverse cultural and spiritual heritage.





# Shashwat Dham

Combining Sanatan Dharma and spiritual growth, Shashwat Dham aims to be a destination for learning. Amidst the scenic foothills of Nawalparasi and spread over 12 verdant acres, the temple is a destination for explorers, spiritual seekers and nature lovers alike to discover ancient knowledge and inner peace. It lies in the Devchuli region of the Nawalpur district on the east-west highway and is 22 km west from Narayanghat.

Shashwat Dham is one of Nepal's most visited tourist destinations. With the stunning Ekambareshwar Shiva Temple, a Buddhist centre and a yoga retreat, the site attracts visitors from all walks of life. With the divine blessings of Gurudev Sri Sri Ravi Shankar Ji and Sri Kanchi Shankaracharya Jagadguru Jayendra Saraswati Ji, Shashwat Dham aims to be a destination for everyone to attain spiritual strength, immerse themselves in eternal knowledge passed down by generations of saints and sages from Vedic times and experience the love and joy — the true nature of our inner being.

- To preserve knowledge of ancient writings, Shashwat Dham unearths and conserves Nepal's ancient manuscripts, where it is estimated that there are more than 20,000 scattered across the nation in different institutions and private collections. There are two museums inside Shashwat Dham, including a Hindu religious

museum and Nirvana Museum. The Hindu museum is located in the basement of the Ekambareshwar Mahadev and is dedicated to ideology, philosophy, scriptures, history and traditions. It has also preserved souvenirs from the famous spiritual destinations across Nepal and India to showcase through an audio-visual experience. The Nirvana museum is dedicated to the life of Siddhartha Gautama Buddha and his process of becoming enlightened.

- It is also home to numerous beautiful statues, a Dhunge Dhara, a heritage store, Kamal Kunda, Sahastra Saligram, Hanuman Kshetra Temple and the Dharma Kshetra.

“We regard Shashwat Dham as the beginning of a new revolution for preservation of our spiritual heritage and all the elements associated with Sanatana dharma which needs to be preserved and shared with generation to come help them make their lives more fulfilling.”

— Binod Chaudhary

1

NO  
POVERTY



2

ZERO  
HUNGER



3

GOOD HEALTH  
AND WELL-BEING



7

AFFORDABLE AND  
CLEAN ENERGY



8

DECENT WORK AND  
ECONOMIC GROWTH



9

INDUSTRY, INNOVATION  
AND INFRASTRUCTURE



13



CLIMATE  
ACTION

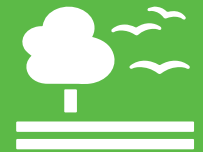
14

LIFE  
BELOW WATER



15

LIFE  
ON LAND



4

QUALITY  
EDUCATION



5

GENDER  
EQUALITY



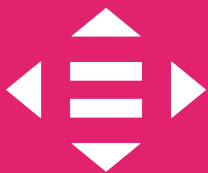
6

CLEAN WATER  
AND SANITATION



10

REDUCED  
INEQUALITIES



11

SUSTAINABLE CITIES  
AND COMMUNITIES



12

RESPONSIBLE  
CONSUMPTION  
AND PRODUCTION



16

PEACE, JUSTICE  
AND STRONG  
INSTITUTIONS



17

PARTNERSHIPS  
FOR THE GOAL



**The Global Goals**  
For Sustainable Development

# News & Events



## CSR Award

The recognition Frost & Sullivan has bestowed upon Chaudhary Foundation as “Nepal Company of the Year Award for Corporate Social Responsibility- Private Sector” as part of South Asia Best Practices Awards 2018. The award, hosted by Frost & Sullivan, a global consulting firm based in the United States was a real inspiration to the Foundation team because it was selected out of many other corporates of Nepal. Chaudhary Foundation will continue to spur delivered excellence to further achievements. Speaking at the event, MD, Nirvana Chaudhary requested corporates to come together and do projects in collaboration in order to serve those in need, lend a helping hand during a crisis and create a bigger impact in the community we live in.

## Orientation on DPRP & BCM

The orientation on Disaster Preparedness Response Plan (DPRP) & Business Continuity Management (BCM) was conducted at Chaudhary Group’s Industrial Park (CGIP) located in Nawalpur with 28 senior management staff attendees.

The training was regarding the overall strategy on how to be better prepared to recover from a major natural catastrophe, to ensure the safety of all employees and to secure business sites and facilities. The senior management staff was provided this training with special context to CGIP for mitigation efforts and contingency planning. Asian Disaster Prepared Center provided a technical support to organize this program.







## London Business School Visit

Chaudhary Foundation welcomed a group of 28 students and professors from the London Business School to hear from Mr. Nirvana Chaudhary and Mr. Anil Keshary Shah speak on running socially responsible businesses in Nepal. We are inspired by these young, upcoming entrepreneurs.

## Artificial Limb Fitment Camp Opening

Chaudhary Foundation with support from Embassy of India, Bhagwan Mahaveer Viklang Sahayata Samiti provided artificial limbs to over 500 amputees. The official opening of the camp was carried out by Deputy Prime Minister & Minister for Health & Population Hon. Upendra Yadav along with Ambassador of India for Nepal HE Manjeev Singh Puri, founder of BMVSS Dr. DR Mehta. Chairman of Chaudhary Foundation Mr. Binod Chaudhary at Norvic Hospital.



## PM visited Shashwat Dham

Honourable Prime Minister K.P. Sharma Oli visited Shashwat Dham and opened an artificial limb fitment camp which has been providing disabled people artificial limbs, calipers and other aids and appliances free of charge.





## Nawalpur Development Plan

Nawalpur Development Plan was envisioned by Chaudhary Foundation and its partner called Sahamati in Nawalpur district. This initiative was introduced in order to portray the youngest district of the nation, Nawalpur, as a model district in the country. Various experts from development sector, government bodies, NGO experts and various other bodies compiled all important projects based on development potential and development needs of the Nawalpur district. The model Nawalpur book was unveiled on November 16, 2018 in Nawalpur district.

## Serendipity Art Festival

Bikkil Staphit, Pooja Pant and Shristi Shrestha, participated in Young Subcontinent Sightlines at Serendipity Art Festival in Goa in support of Chaudhary Foundation in 2018.



“Serendipity Arts Festival proved to be an amazing opportunity to showcase our work outside of Nepal and to meet and network with other artists and arts related persons. It was also a great learning opportunity for us to see many other forms of arts and get inspiration from all over South Asia. Many people we met in Goa had no idea about contemporary issues of Nepal which our work spoke about. To be able to share stories and have dialogues with people who wouldn’t have had access to these stories meant a lot to both me & Bikkil. Thanks to the support of CG Foundation for making this possible.”

-Pooja Pant  
Participant Artist

## Chaudhary Foundation Supported for Musical Performance



Chaudhary Foundation, in partnership with CG Foods provided significant support to the spectacular musical show called Kumari and the Beast organized by Sushila Art Academy. The story is based on the legends of Nepal the the Kumari “the living goddess” set in Satya Yuga. The traditional charya dance was combined with contemporary dance to depict the story of one of Nepal’s most iconic cultural and religious figures.



### Chairman Chaudhary Inaugurates Digital Class Room

Chairman of Chaudhary Foundation and Member of Parliament Binod Chaudhary inaugurated the digital class rooms in Nawalpur of Nawalparasi district amid a function on Sunday.

- By NEW SPOTLIGHT ONLINE

June 18, 2018, 10:38 a.m.



### शाश्वतधाममा दश लाख दर्शनार्थीद्वारा अवलोकन



नवलपुर । नवलपुरको दुम्कोलीस्थित चौधरी थुप (सीजी)को शाश्वतधामका बारेमा नसुन्ने हिजोआज कमे होलान् । सिराहा गोलबजार नगरपालिका वडा नं ५ का शिक्षक सविदानन्द साहले पनि यो धामका बारेमा धेरै नै सुनेका थिए । गोलबजार-२ मा रहेको आधारभूत विद्यालयका सहायक प्रधानाध्यापक साह शनिबार विद्यार्थीको भ्रमण दलसहित धाममा पुगे ।

धाम पुग्दा उनी त्यहाँको दृश्य हेरेर दंग पर्नु त स्वभाविकै थियो अर्को नसोचेको कुरा उनले धामका तर्फबाट सम्मान पनि पाए । उनी धामको प्रवेशद्वार छिर्दा धाम घुम्न आउनेको संख्या १० लाख पार भइसकेको थियो । धाम घुम्नेको संख्या १० लाख पुगेपछि नयाँ आउने ११ जनालाई सम्मान गर्ने योजना थियो । साह र उनको विद्यार्थीको टोली सोही समूहभित्र पर्‍यो ।



### नयाँ पत्रिका

चौधरी फाउन्डेसनद्वारा ५०० जनालाई कृत्रिम खुट्टा

- नयाँ पत्रिका, २०७५ पौष ३० सोमबार १०:१५:००; काठमाडौं



चौधरी फाउन्डेसनले नेपालमा कृत्रिम खुट्टा वितरण कार्यक्रम सुरु गरेको छ । विभिन्न कारणले खुट्टा गुमाएकालाई सहयोग पुर्याउने उद्देश्यले कार्यक्रम सञ्चालन गरेको फाउन्डेसनले जानकारी दिएको छ ।

आइतबार काठमाडौंको नर्भिक इन्टरनेसनल अस्पतालमा आयोजित एक विशेष समारोहबीच उपप्रधान एवं स्वास्थ्य तथा जनसंख्यामन्त्री उपेन्द्र यादव र चौधरी फाउन्डेसनका अध्यक्ष विनोद चौधरीले कृत्रिम खुट्टा वितरण कार्यक्रमको औपचारिक शुभारम्भ गरे । कार्यक्रममा नेपालका लागि भारतीय राजदूत मनजीव सिंह पुरी, भगवान



### चौधरी फाउन्डेसनद्वारा बिद्यालयलाई खानेपानी प्लाण्ट हस्तान्तरण



सूर्यप्रसाद अधिकारी, जेठ ३१, मेघौली । चौधरी फाउन्डेसनले भरतपुर महानगरपालिका वडा नम्बर २८ स्थित लोखरी को आधारभूत विद्यालयलाई शुद्ध खानेपानी प्रणाली हस्तान्तरण गरेको छ । बिहीबार बिद्यालयले आयोजना गरेको एक कार्यक्रम बीच चौधरी थुप तथा चौधरी फाउन्डेसनका अध्यक्ष विनोद चौधरीले सो प्लाण्ट हस्तान्तरण गर्नुभएको हो ।

कार्यक्रमको उद्घाटनपछि बोल्दै अध्यक्ष चौधरीले सम्पन्न राष्ट्र बन्नका लागि शिक्षित तथा स्वस्थ नागरिक अपरिहार्य हुने भन्दै विद्यालयलाई खानेपानी प्लाण्ट सहयोग गरेको बताउनु भयो । २५ वर्षदेखि फाउन्डेसनले सम्पन्नताको बाटो अपनाउनु शिक्षार्थी र विद्यालयलाई साथ दिदै आएको बताउँदै चौधरीले यस ठाउँसँग आफ्नो नजिकको सम्बन्ध गाँसिएकोले पनि सहयोग गरेको बताउनु भयो ।



# Harvard Business School Case Study on Chaudhary Foundation



“Chaudhary Group: Rebuilding Nepal” is the case study done by Christopher J. Malloy, Lauren H. Cohen and Inakshi Sobti and is published on the Harvard Business School publishing site. This case study is published on 25th March 2018.

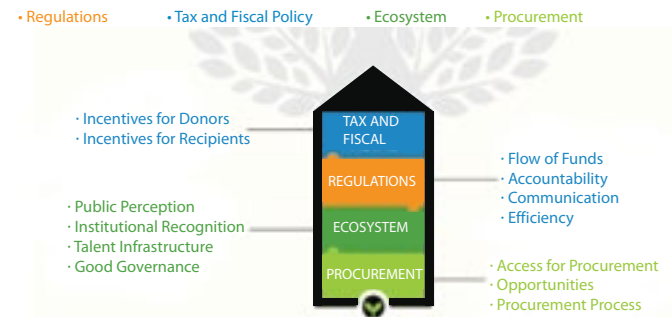
The massive earthquake with a magnitude of 7.9 Richter scale in 2015 rattled Nepal to its very core, which killed nearly 9,000 and destroyed over 750,000 homes across the country. The study is about how a billion-dollar conglomerate, Mr. Binod Chaudhary, chairman of Chaudhary Group in Nepal, decided to play a pivotal role in rebuilding the country with its social initiative, –Chaudhary Foundation. The case study focuses on how a billionaire can be dedicated to social work, how he along with a team continually worked with stakeholders to make an impact in people’s lives and how he found many ways to internalize social issues. The Group’s philanthropic arm (Chaudhary Foundation) started immediate response with relief camps and relief distribution and with building transitional shelters. The team responded with 1000+ food packs along with 8 relief camps and built 2500+ transitional shelters that benefitted more than 12000 people.

# Doing Good Index (DGI) 2020 Survey



Doing Good Index (DGI) 2020, a groundbreaking study geared towards helping the social sector in Asia grow and thrive. Chaudhary Foundation has partnered with the Centre for Asian Philanthropy and Society (CAPS) to run the survey in Nepal. Doing Good focuses on 17 economies throughout Asia and recognizes that each has a unique set of strengths, challenges, and needs. It does both in depth and comparative study with the collaboration of various partners across Asia. The study is grounded in evidence-based research and meticulously collected data.

The research findings inform both policy and practice. Equipped with results-based understanding, philanthropists, investors, and policy makers can make informed decisions. Doing Good Index examines the enabling environment for philanthropy and private social investment across 17 Asian economies. Composed of four areas–tax and fiscal policy, regulatory regimes, socio-cultural ecosystem, and government procurement–the Index reveals how Asian economies are catalyzing philanthropic giving.





# Our Partners





**CG Corp | Global<sup>®</sup>**

## CG|FOODS

CG Foods is one of the core businesses of CG Corp Global, with interests in a variety of food products like instant noodles, extruded snacks, potato chips, chocolate enrobed wafer and fried snacks

---

## CG|BREWERY

CG Brewery (Nepal) Pvt. Ltd (CGBN) was established in 1997 as the brewery arm of CG Corp Global. Popular brands include Nepal Ice, Real Gold and Mustang also being exported. CG Brewery is an ISO 9001:2008 certified company.

---

## CG|BEVERAGE

CG Beverage was established in 1998 for manufacturing fruit juices. It produces various flavors in different pack sizes under the brand Rio. The unit added a natural spring water bottling until 2011, located in the foothills of Kathmandu.

---

## CG|CEMENT

CG Cement Global is a wholly owned subsidiary of the Singapore-based CG Corp Global, the international business arm of the multinational conglomerate Chaudhary Group. We have two production plants in Nepal, one in Mozambique and one proposed in Srilanka. We are also planning for other locations in Africa.

---

## CG|PACKAGING

CG Packaging (Nepal) Pvt Ltd was set up in 2010 with the objective of manufacturing high quality corrugated boxes for internal demand as well as for customers.

CG Packaging is Nepal's first automatic corrugation line, with capacity to manufacture 1,00,000 boxes per day.

---

## CG|ELECTRONICS

CG Electronics has been the market leader for over 30 years, offering top quality, life enhancing products. The company is dealing in over nine brands, including LG, TCL & the home-grown CG brand.

---

## CG|HYDROPOWER

CG Corp Global, in a joint venture with Coastal Projects Ltd, acquired Himal Hydro & General Construction Ltd., one of the leading EPC companies in Nepal serving key public and private clients in the fields of Hydropower, tunneling, transmission lines, ropeways, roads, water and waste management and general construction (bridges, buildings).

## CG|FINCO

CG Finco Private Limited, set up in 2003, is one of Nepal's leading remittance companies. It is no. 1 principal agent of Western Union Financial Services, Inc (USA) for Nepal. It provides efficient and secured money transfer services through over 2,500 payout locations strategically placed all over Nepal.

## CG|MOBILE

CG Mobile is established with the objective to deliver mobile handsets of international standards at unbeatable price and value. And these are also accepted as technologically superior by CG Mobile's rising customer base.

## CG|PAY

CG PAY is a virtual wallet that facilitates its user to use various payment services by the funds which could be topped up easily from the user's bank accounts or through authorized agents of CG PAY. Thus bringing secured banking, payments and wallet services directly to the customer's mobile handsets through app. Basically, it is a mobile payment technology which provides users with the facility of paying and getting paid online.

---

## CG|RETAIL

With a view of going into the retail business, CG Retail was established in the year 2011. CG Retail feels proud in operating and managing "Wai Wai City". Nepal's first QSR noodles bar to the noodles lovers here in Nepal. Within the very short span of starting the very first outlet at Labim Mall Lalitpur, Wai Wai City will have its wings spread in more than 15 different places in Nepal in the next 6 months.

---

## CG|DIGITAL

CG Digital Pvt. Ltd. is Nepal's first state-of-the-art model for a one-stop, multi-brand electronics showroom. CG Digital Pvt. Ltd. has a spread out network of several retail stores and service centers across Nepal. The numbers continue to grow with the affection of our loyal customers throughout the country.

---

## CG|ENERGY

Chaudhary Group has long been interested in the development of energy and infrastructure industry in the country and was the first company to initiate private sector participation for hydroelectricity generation.

---

## CG|TEL

CG Telecom Private Limited (CG Corp Global Telecom) is rolling out to provide high quality GSM and other telecom services. Through the acquisition of STM Telecom Sanchar Pvt Ltd, CG Telecom is currently catering to the needs of the rural population of Nepal.

---

## CG|DEVELOPERS

CG Developers Pvt Ltd is the main real estate development unit of CG Corp Global. This business vertical of CG Corp Global is managed by a team of engineers, architects and specialists who have the know-how and expertise of the real estate business.

---

## CG|HOTELS & RESORTS

CG Hotels and Resorts is a result-driven management group formed with over 200 years of specialized hospitality experience. Senior designated person having worked with most successful hospitality companies. CG Hotels and Resorts bring to the table extensive hospitality know-how and proven formulas for success in this competitive industry.

## CG|EDUCATION

CG Education aims to be the best in the education sector, through quality, scale and dynamism. The intent is to provide educational services involving world-class processes, practices, and resources to produce smart, bright and confident students. CG Education's goal is to blend quality education with growth and standardization.

## CG|Polytechnic

CG Education is committed to provide technical education and vocational training programs to produce skilled workforce as an important component of economic transformation for the nation. With this commitment, CG has established a skill development center under the name of CG Polytechnic as a HUB center in Kathmandu and establish training centers in various regions of the country.

# CG Corp | Global®

## NEPAL

Chaudhary House, Sanepa, Lalitpur  
P.O.Box: 1073, Kathmandu, Nepal  
Tel. :+977-1-5522330, 5529273

## SRI LANKA

2<sup>nd</sup> Floor, AEC Building 140,  
Vauxhall Street  
Colombo 2, Sri Lanka

## UAE

Suite 3201, HDS Business  
Center Jumeirah Lakes Tower  
Dubai, UAE

## USA

333 West 32<sup>nd</sup> Street  
Suite 802 New York, NY 10001, USA

## INDIA

CG Foods India Pvt. Ltd.  
434, Udyog Vihar Phase - III,  
Gurgaon - 122001 (Haryana)  
Phone:+91 124 4670600

## INDIA (SILIGURI)

290/1 Lala Lajpath Roy Road,  
Anima Bhawan, 2<sup>nd</sup> Floor,  
Ashrampara, Siliguri-734001

## INDIA (GUWAHATI)

2B, 2<sup>nd</sup> Floor, Royal Circle,  
Near State Zoo, R.G. Bauah Road,  
Guwahati 781024, Assam

## MANUFACTURING

### INDIA (RUDRAPUR)

India (Rudrapur) Sector 4,  
Plot No. 77, IIE Pantnagar,  
Sidcul, Rudrapur (Uttarchal)

### INDIA (CHITTOOR)

Srini Food Park, MOGILI Village,  
Bangarupalayam Mandal, Chittoor  
District-517429, Andhra Pradesh

### NEPAL (NAWALPARASI)

CG Industrial Park  
Nawalparasi, Nepal

### NEPAL (LALITPUR)

CG Food Park, Sainbu  
Lalitpur, Nepal

### NEPAL (BARDIA)

CG Food Park, Bardia,  
Far Western Region, Nepal

### INDIA (RANGPO)

SMC Compound  
Rangpoo East, Sikkim

### INDIA (CHYAGAUN)

Industrial Growth Centre,  
Chyagaun, Mouza Bongaon,  
Village Chatabari, Dag No. 40,  
Chyagaun, District Kamrup (Assam)

### INDIA (PURNEA)

Industrial Growth Center  
BIADA,  
Maranga-854301 Dist.  
Purnea (Bihar), India.

### CHINA

Sajin Jiantang Jiudian  
Youxian Gongsi  
Xiang Ge Li La Xian (Sangri-la)  
Oldtown No. 31, Jinlong Jie Street  
Diqing Tibet Autonomous  
Yunnan P.R.C. 674400, China

### SINGAPORE

10 Anson Road  
#16-22, International Plaza  
Singapore 079903  
Tel: +65-6220-8721

### THAILAND


Thailand Unit 12J, 12<sup>th</sup> Floor,  
President Tower,  
973 Ploenchit Road,  
Lumpini, Pathumwan,  
Bangkok 10330, Thailand

### INDIA (SILCHAR)

Khaspur, Rajabari, Road  
Dumarghat, Udhorbond,  
Silchar, Assam







# ACTING AS A SUSTAINABLE DEVELOPMENT GOAL KEEPER FOR NEPAL

**CG CHAUDHARY®  
GROUP**  
*Touching life everyday*

**CG Corp | Global®**

**CHAUDHARY | FOUNDATION**

Chaudhary House, Sanepa, Lalitpur  
P.O.Box: 1073, Kathmandu, Nepal  
[info@chaudharyfoundation.org](mailto:info@chaudharyfoundation.org)  
Tel: +977 1 5522330, 55229273